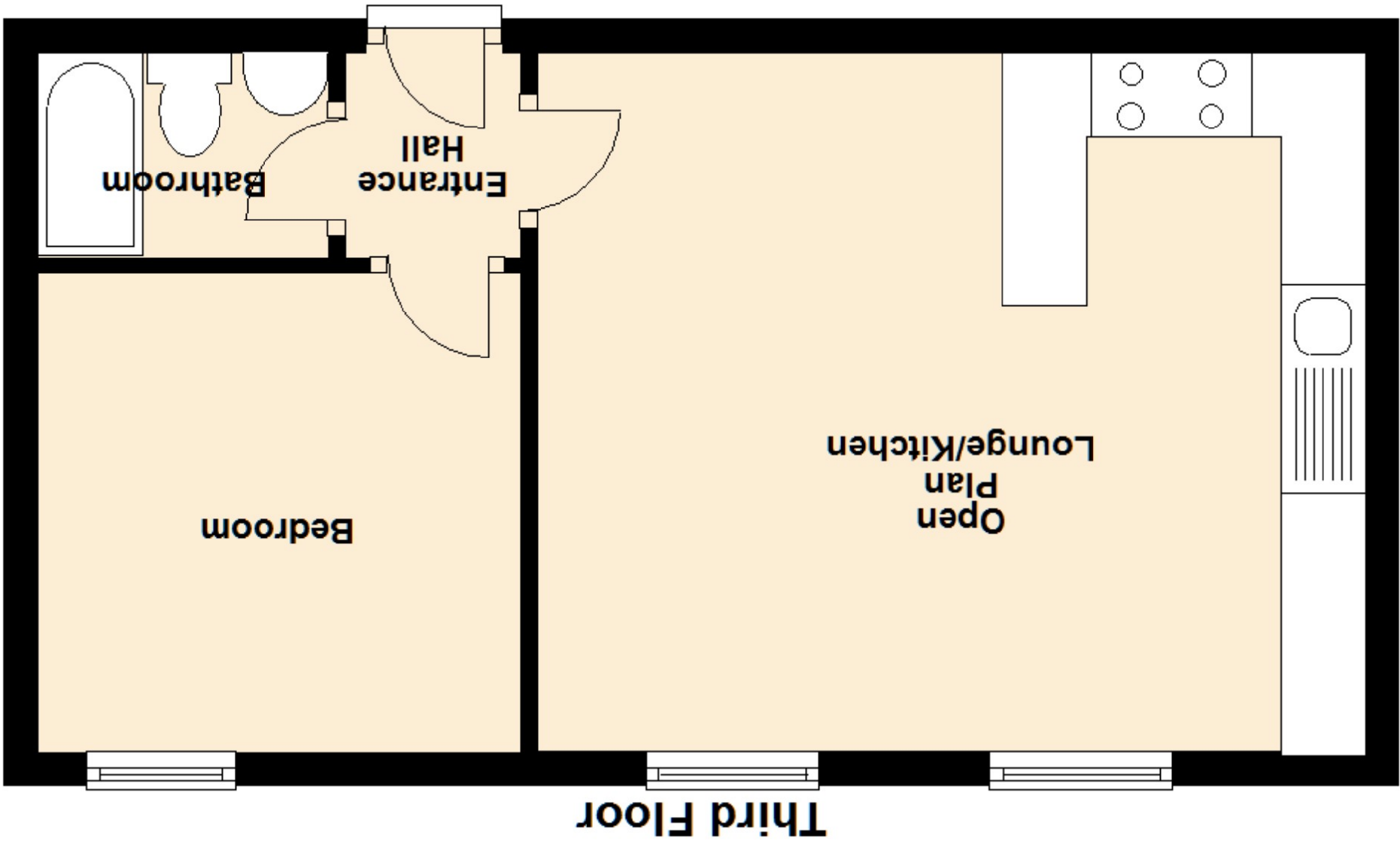


These particulars are believed to be accurate but they are not guaranteed and do not form a contract. Neither Jordan Fishwick nor the vendor or lessor accept any responsibility in respect of these particulars, which are not intended to be statements or representations of fact and any intending purchaser or lessee must satisfy himself by inspection or otherwise as to the correctness of each of the statements contained in these particulars. Any floorplans on this brochure are for illustrative purposes only and are not necessarily to scale.





The Mayfair, West Didsbury
M20 3LS
£750 Per calendar month



The Property

*** AVAILABLE MID MAY *** A stylishly presented, one bedroomed apartment occupying a top floor position within a purpose built development set back from the road. The apartment comprises: entrance hall, fashionable open plan lounge/kitchen over 16 foot, lounge having laminate woodblock flooring, kitchen with integrated appliances and breakfast bar, there is a well proportioned bedroom with fitted furniture and a three piece white modern bathroom. The development is set in lawned grounds and there is secure parking set behind electric gates. Fully Furnished. Call 0161 434 5290 to arrange a viewing.

Directions

From Jordan Fishwick Didsbury head down Wilmslow Road towards Manchester. At the second set of traffic lights turn left on Lapwing Lane. Follow the road to the next set of traffic lights and turn right onto Palatine Road. Follow the road down around 1/4 of a mile and the property can be found on the right hand side.

- One Bedroom
- Furnished
- Top Floor Apartment
- Double Glazing
- Close to Local Amenities
- Electric Heating

Postcode - M20 3LS

EPC Rating - D

Floor Area - sq ft

Local Authority -

Council Tax - Band

