



## Portobello Road, London, W11 £1,842 Per Month Part furnished

In a prominent position on Portobello Road with views directly over one of London's most notable and best loved antique Street Markets, bustling with life and character this apartment is a must for anyone wanting to live in the heart of a community.

This modern one bedroom property has been recently refurbished to offer well designed and bright living space with big windows and great character.

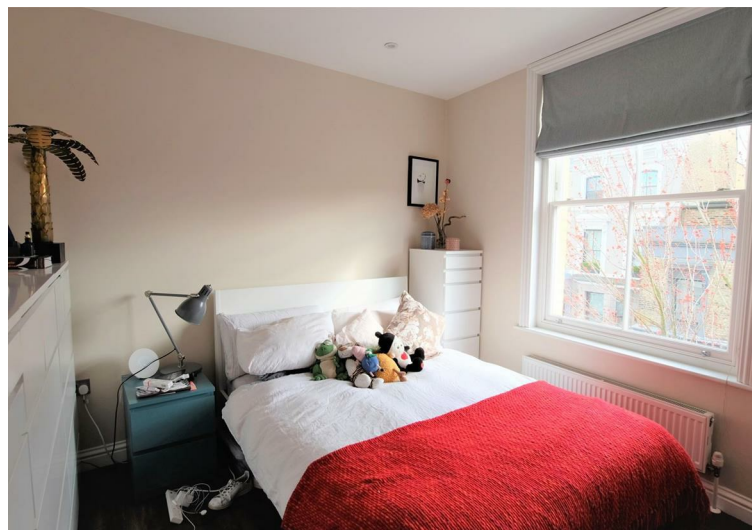
The property benefits from wood effect Karndean flooring, modern fully fitted kitchen, modern bathroom and bicycle storage.

Please note occupants of this property have no right to apply for council parking permits.

Kensington & Chelsea - £1,190.55

EPC - C





**g** | **AWAITING  
FLOOR PLAN**

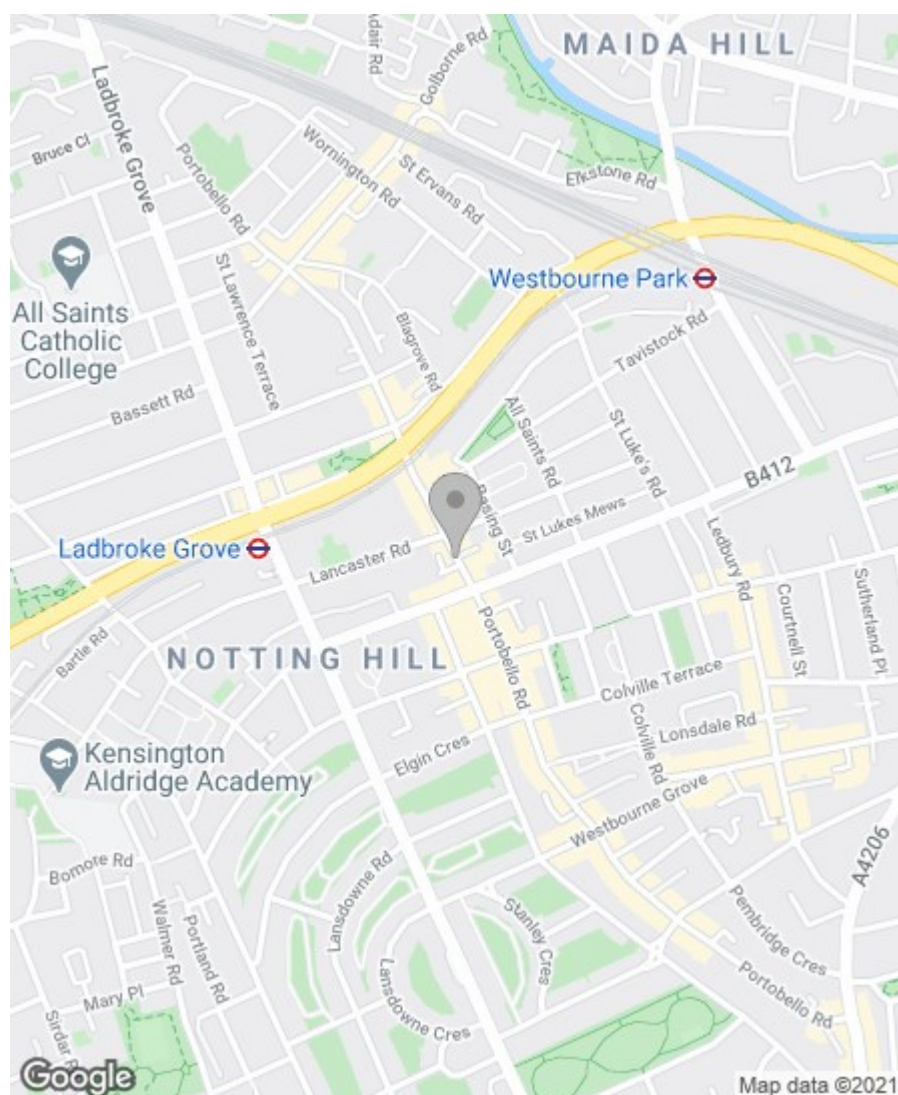


## Property Overview

Location	Notting Hill, W11
Price	£1,842 Per Month
Bedrooms	1
Bathrooms	1
Receptions	1
Council	
Tax Band	
Furnishing	Part furnished

## Key Features

- Dark wood floors
- Bicycle Storage
- Modern kitchen
- Portobello Market
- Great location
- Available April 24th



## Energy Efficiency Rating

	Current	Potential
Very energy efficient - lower running costs		
(92 plus) A		
(81-91) B		
(69-80) C	76	77
(55-68) D		
(39-54) E		
(21-38) F		
(1-20) G		
Not energy efficient - higher running costs		

## England & Wales

EU Directive  
2002/91/EC



## Environmental Impact (CO<sub>2</sub>) Rating

	Current	Potential
Very environmentally friendly - lower CO <sub>2</sub> emissions		
(92 plus) A		
(81-91) B		
(69-80) C		
(55-68) D		
(39-54) E		
(21-38) F		
(1-20) G		
Not environmentally friendly - higher CO <sub>2</sub> emissions		

## England & Wales

EU Directive  
2002/91/EC



IMPORTANT NOTICE: All of the information is intended only as a guide to a prospective purchaser and does not constitute any part of an offer or contract. Any measurements or distances referred to herein are approximate only. Any information contained herein (whether in the text, plans or photographs) is given in good faith and cannot be relied upon as being a statement or representation of fact. Should you proceed with the purchase of the property, your solicitor must verify these details. We have not carried out a detailed survey nor tested the services, appliances and specific fittings. In accordance with current legislation we would advise you that the measurements on these particulars are imperial. The formula for conversion to metric is as follows:- 1' (one foot) = 30.4cm (centimetres), 1m (one metre) = 3'29 (feet).