



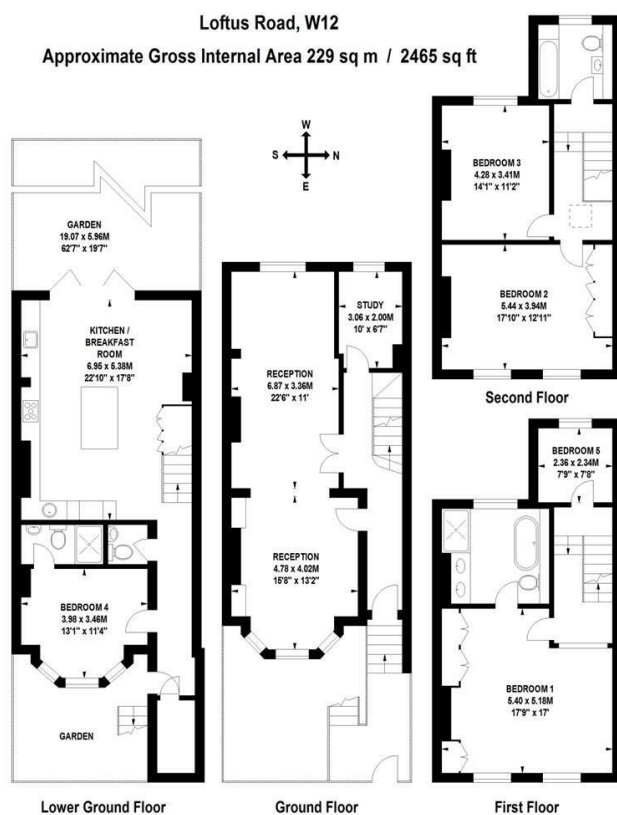
LOFTUS ROAD W12





- 5 BEDROOMS • WOODEN FLOORS • SPACIOUS DOUBLE RECEPTION • STUNNING KITCHEN BREAKFAST ROOM • 2 BATHROOMS, 1 SHOWER ROOM AND SEPARATE WC • STUDY • BEAUTIFUL WEST FACING GARDEN • UNFURNISHED • AVAILABLE MAY

Beautiful 5 bedroom family home, with wooden floors, spacious double reception, stunning kitchen breakfast room opening to a substantial west facing garden. 2 bathrooms (1 ensuite), a shower room and separate WC, and study. Located in a treeline residential street, close to White City House and the transport links at Shepherds Bush. Unfurnished, available from late May.



Floor Plan produced for Finlay Brewer by Mays Floorplans ©. Tel 020 3397 4594
Illustration for identification purposes only, not to scale.
All measurements are maximum, and include wardrobes and window bays where applicable.
This Floorplan has been prepared in accordance with the current edition of the RICS code of measuring practice.

138 Shepherds Bush Road, London, W6 7PB
Tel: 020 7371 4071 lettings@finlaybrewer.co.uk