



GARTON JONES

Moore House, 2 Gatliff Road
London SW1W

GARTONJONES.COM



Moore House, 2 Gatliff Road
London, SW1W

GARTON JONES.COM

8 Gatliff Road
Chelsea
London
SW1W 8DP

Sales +44 (0) 20 7730 5007
gws@gartonjones.com
www.gartonjones.com

£1,300 Per Week

A THREE BEDROOM apartment to rent of approx. 1096sq.ft (101.78sq.m) in Moore House, one of the buildings on the Grosvenor Waterside development, located close to the banks of the River Thames by Chelsea Bridge. This bright apartment can be FURNISHED OR UNFURNISHED with an open plan reception room, a smart kitchen with Miele integrated appliances including a wine cooler, wood flooring, comfort cooling, en-suite bathroom plus a separate shower room, excellent storage including a utility cupboard housing a Bosch washer dryer and built in wardrobes to the master bedroom. There is a LARGE PRIVATE BALCONY and secure UNDERGROUND PARKING. 24 HOUR CONCIERGE, GYM & SPA. On-site Sainsbury's Local, coffee shop and private kids club. SLOANE SQUARE & VICTORIA station with Gatwick Express are within walking distance.

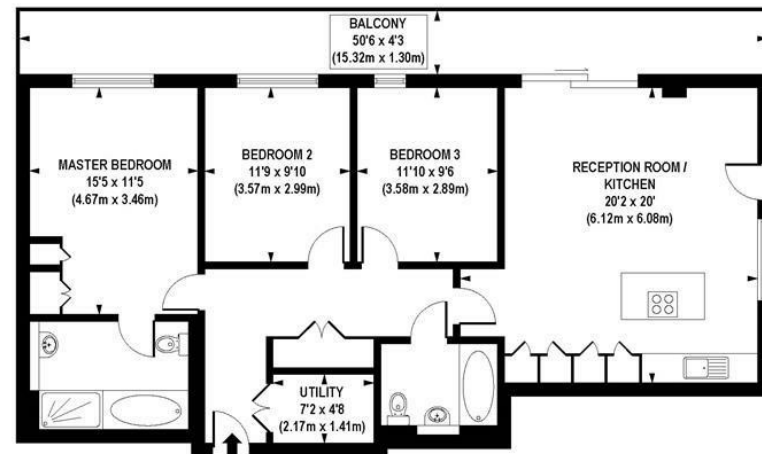
Available via Garton Jones on-site office at Grosvenor Waterside (underneath Bramah House).

Please note furniture may differ to that shown in the current photos.

EPC certificate available on request.

- 1096 Sq.ft (101.78 Sq.m)
- Three Bedrooms
- Open Plan Reception Room
- Luxury Integrated Kitchen
- En-Suite Bathroom & Separate Shower Room
- 24 Hour Concierge
- Large Private Balcony
- Secure Underground Parking
- Residents' Gym with Spa Facilities
- Walking Distance to Sloane Square & Victoria Station





APPROX. GROSS INTERNAL FLOOR AREA 1096 sq. ft / 101.78 sq. m

Floorplan is for illustrative purposes only and is not to scale.
Every attempt has been made to ensure the accuracy of the floorplan shown, however all measurements, fixtures, fittings and data shown are an approximate interpretation for illustrative purposes only.
Liability for errors, omissions or mis-statement through negligence or otherwise is hereby excluded.

