



Hepworth Court, 30 Gatliff Road
London SW1W

GARTONJONES.COM



Hepworth Court, 30 Gatliff Road
London, SW1W

GARTON JONES.COM

8 Gatliff Road
Chelsea
London
SW1W 8DP

Sales +44 (0) 20 7730 5007
gws@gartonjones.com
www.gartonjones.com

£475 Per Week

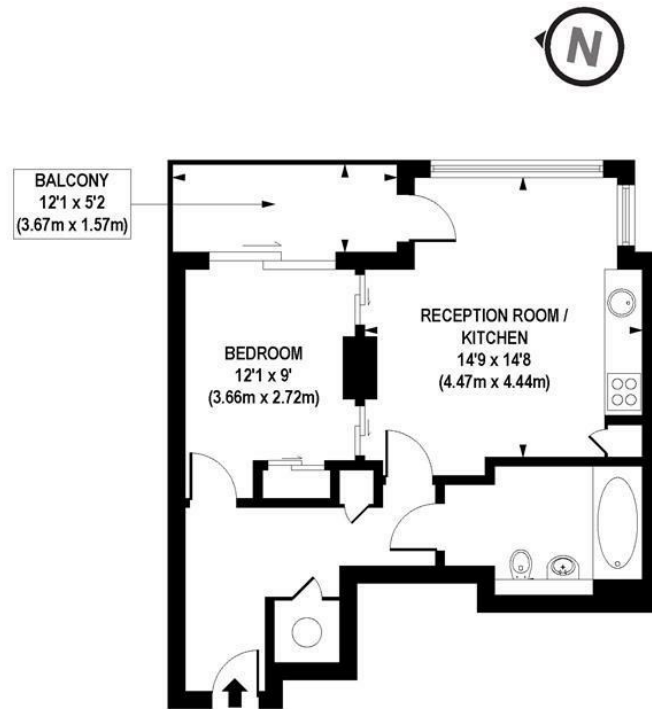
A one DOUBLE bedroom apartment of approx 484sq.ft (44.95sq.m), with a PRIVATE BALCONY overlooking the docks in the Grosvenor Waterside development. This FURNISHED apartment comprises of a bright dual aspect open plan reception room with an integrated kitchen, bathroom, fitted wardrobes to the bedroom, wood flooring, comfort cooling, underfloor heating and SECURE PARKING. There is a utility cupboard housing washer/dryer and hallway storage cupboard. Residents will have the use of a 24 hour concierge service, a leisure suite with a well-equipped gym and spa facilities. Our office is on-site at Grosvenor Waterside (underneath Bramah House) as well as an on-site Sainsbury's Local, a coffee shop, crèche and Purple Dragon private kids club. The additional amenities including shops, restaurants and the excellent transport links of both Sloane Square and Victoria are within walking distance.

Please note the furniture may differ or not be included to that shown in current photos.

- 484 Sq.ft (44.95 Sq.m)
- One Double Bedroom
- Open Plan Reception Room
- Integrated Kitchen
- Modern Bathroom
- 24 Hour Concierge
- Private Balcony
- Secure Underground Parking Space
- Residents' Gym with Spa Facilities
- Walking Distance to Sloane Square & Victoria Station



EPC certificate available on request.



APPROX. GROSS INTERNAL FLOOR AREA 484 sq. ft / 44.95 sq. m

Floorplan is for illustrative purposes only and is not to scale.
Every attempt has been made to ensure the accuracy of the floorplan shown, however all measurements, fixtures, fittings and data shown are an approximate interpretation for illustrative purposes only.
Liability for errors, omissions or mis-statement through negligence or otherwise is hereby excluded.

CP CREATIVE
PROPERTY MARKETING

