



Sandringham House, London
Southwark SE1

GARTONJONES.COM



Sandringham House, London Southwark, SE1

GARTON JONES.COM

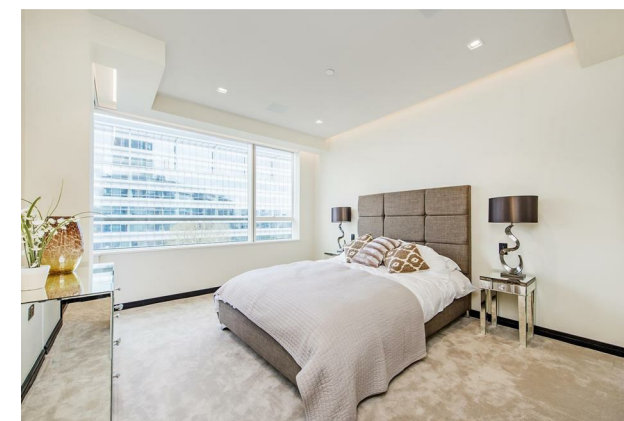
9 Albert
Embankment
London
SE1 7SP

Lettings:
+44 (0) 20 7735 1888
nineelms@gartonjones.com
www.gartonjones.com

£1,050 Per Week

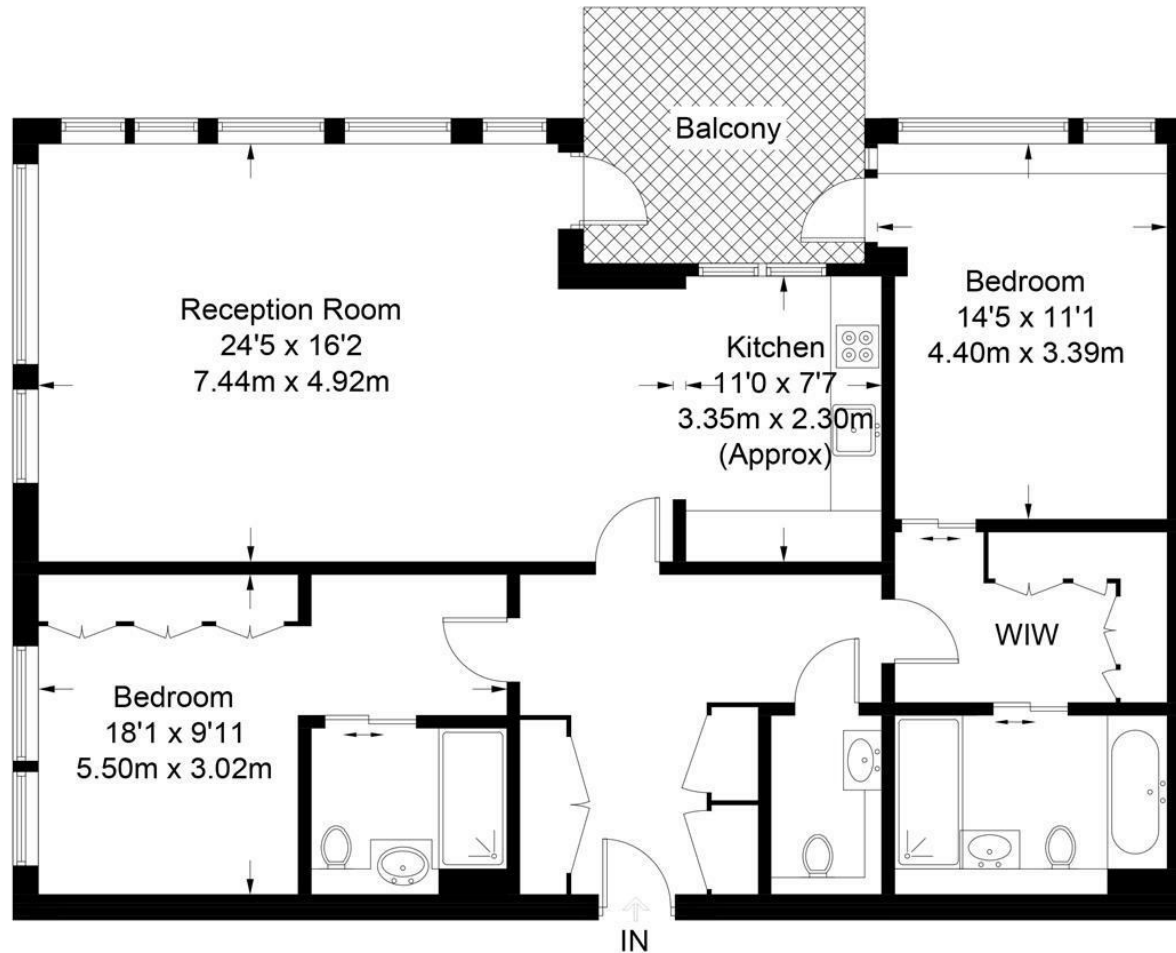
A dual aspect 2 double bedroom apartment in this brand new development located next to Tower Bridge and the River Thames. This property has been finished to the highest specification with state-of-the-art technology and interior design by Conran & Partners. The living space is approx. 1193 sq.ft (110.8sq.m) and the accommodation further comprises of a contemporary dual aspect open plan reception room with an integrated kitchen, private terrace, fitted wardrobes to both bedrooms, a utility cupboard and 2 luxury bathrooms (1 en-suite). One Tower Bridge further benefits from a stunning residents' spa with a pool, sauna, steam room and gym (including virtual golf), while the attached boutique hotel offers fine dining and an elegant bar. The transport links of London Bridge, Tower Hill and Tower Gateway are all within easy reach. Parking available by separate negotiation.

- 1193 sq.ft (110.8sq.m)
- 2 Bedroom Apartment
- Dual Aspect Reception Room
- Smart Integrated Kitchen
- 2 Luxury Bathrooms (1 En-Suite)
- Private Terrace
- 24 Hour Concierge & Secure Parking (available under separate negotiation)
- Residents' Spa with Pool, Sauna, Steam Room & Virtual Golf
- Close to Local Amenities Including Shops, Restaurants & Transport Links
- Walking Distance to London Bridge, Tower Hill Station



Sandringham House

Approximate Gross Internal Area = 1193 sq ft / 110.8 sq m



Fifth Floor

Not to scale, for guidance only and must not be relied upon as a statement of fact.
All measurements and areas are approximate only and have been prepared in accordance with the current edition of the RICS Code of Measuring Practice.

