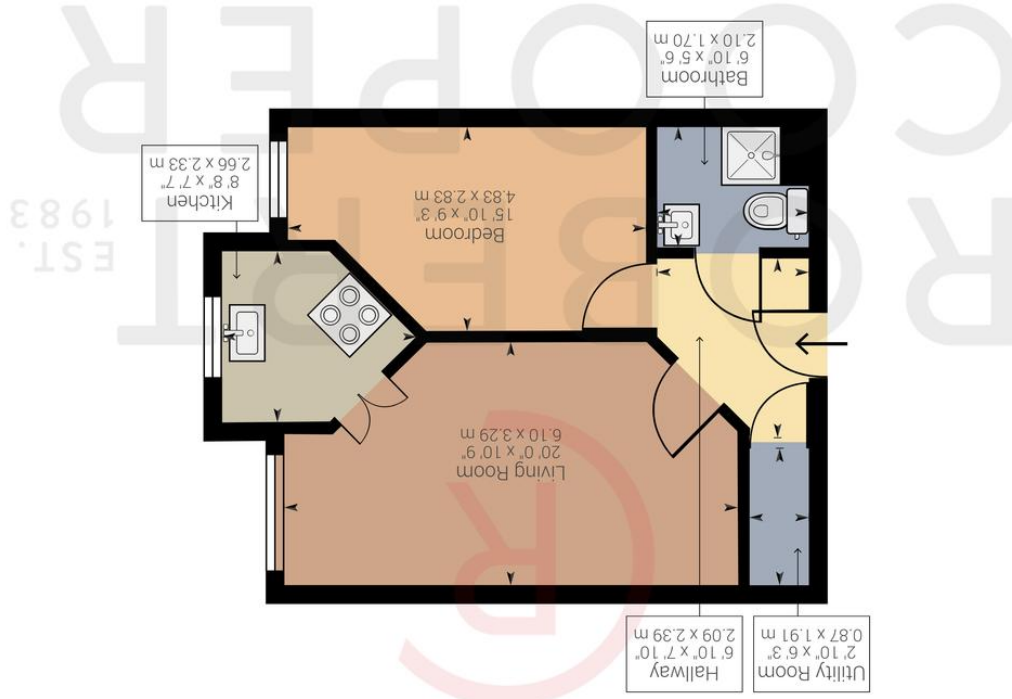


Powered by Giraffe360

Approximate net internal area: 480.45 ft² / 44.64 m²
While every attempt has been made to ensure accuracy, all measurements are approximate.
not to scale. This floor plan is for illustrative purpose only and should be used as such by any prospective tenant or purchaser.



WOOD LANE, HA4 6DH
OFFERS OVER £200,000





A well presented one bedroom top floor retirement apartment set in this sought after gated development just off of Ruislip high street. Features include no upper chain, parking, communal gardens, lift to all floors, emergency pull cords, entryphone system, 24/7 care line, communal lounge area and guest suite. The property is 0.3 miles away from Ruislip high street and station (Metropolitan & Piccadilly Line).

No Upper Chain

Top Floor Apartment

Lift To All Floors

Parking

One Double Bedroom

Communal Gardens

24/7 Care Line

Guest Suite

Walking Distance To Met/Piccadilly Line

