



Asking Price Of £500,000

80b Powys Lane

London

N13 4HR

EPC Rating '82'

Council Tax Band

- Two Double Bedrooms
- Split Level Conversion Flat
- Open Plan Reception/Kitchen
- Views Over Broomfield Park
- Bathroom/WC
- Current EPC rating B
- En-Suite to The Master Bedroom
- Study/Dressing Area

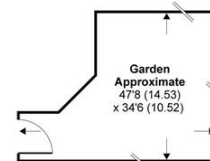
Powys Lane, London, N13

Approximate Area = 892 sq ft / 83 sq m

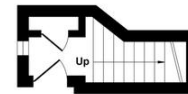
Limited Use Area(s) = 121 sq ft / 11 sq m

Total = 1013 sq ft / 94 sq m

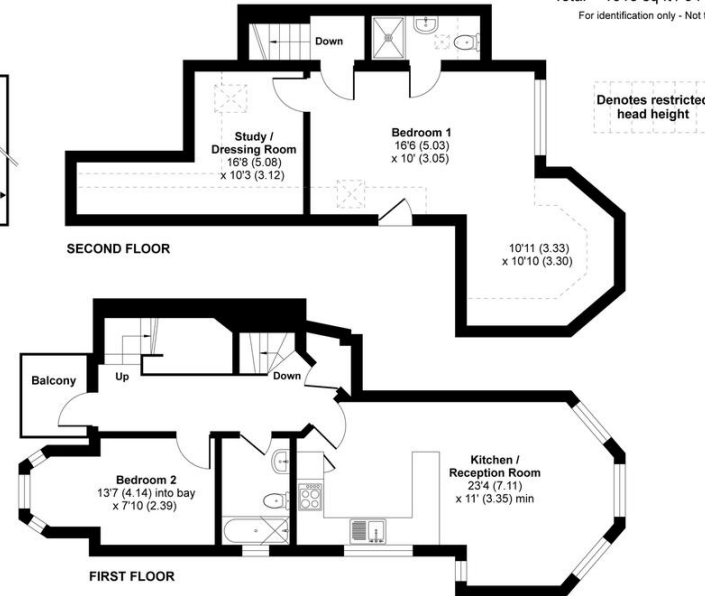
For identification only - Not to scale



GROUND FLOOR 2



GROUND FLOOR



Floor plan produced in accordance with RICS Property Measurement Standards incorporating International Property Measurement Standards (IPMS2 Residential). ©richecom 2021. Produced for Spencer & Sener. REF: 711906

Agents Note: Whilst every care has been taken to prepare these particulars, they are for guidance purposes only. All measurements are approximate and for general guidance purposes only and whilst every care has been taken to ensure their accuracy, they should not be relied upon and potential buyers/tenants are advised to recheck the measurements