

To arrange a viewing  
please call 01908 675747

A MODERN DETACHED family home in a HIGHLY SOUGHT AFTER LOCATION, with TWO RECEPTION ROOMS, SPACIOUS KITCHEN and an EN-SUITE TO MASTER & available now...

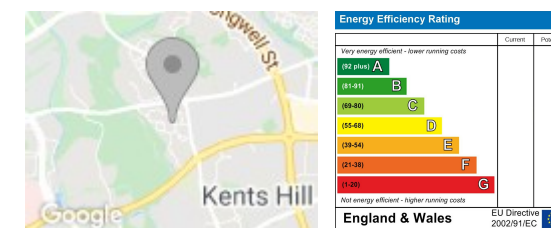
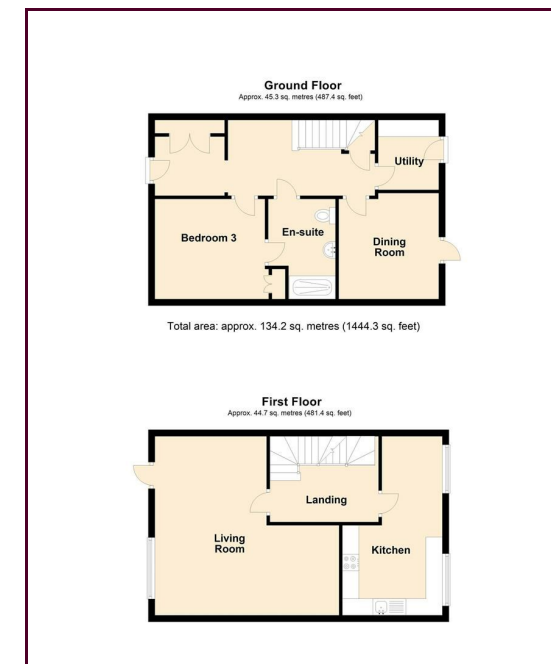
In further detail, this wonderful home is situated in the popular location of Monkston Park to the East of Milton Keynes. Briefly comprising of two reception rooms, a utility room, and a double bedroom with en-suite. Upstairs is a modern kitchen with a large living area with a juliet balcony. To the second floor there is the master bedroom with an en-suite, a further double bedroom and a family bathroom.

Offered Unfurnished and Available Now. EPC Rating: C.

- Three Double Bedrooms
- Modern Kitchen
- Two En-Suites
- Utility Room
- Offered Unfurnished
- Single Garage

LOCATION: MONKSTON PARK

Monkston Park is located by Brickhill Street (V10) and between Standing Way (H8) & Chaffron Way (H7). The area is situated within close proximity of the City Centre, Kingston district centre and close to junctions 13 & 14 of the M1 motorway. The area is within the catchment of Oakgrove Secondary School (one of the newest schools to be built in Milton Keynes) and is adjacent to Ouzel Valley Park.



### Draft Details

These details have been submitted to our clients but at the moment have not been approved by them. We therefore, cannot guarantee their accuracy and they are distributed on this basis. Please ensure you have a copy of our approved details before committing yourself to any expense.

Whilst we endeavour to make our sales details accurate and reliable, if there is any point which is of particular importance to you, please contact the office and we shall be pleased to check any information for you. Do so, especially if travelling any distance to view the property.

The mention of any appliances and/or services within these details does not imply they are in full and efficient working order.

Any plans included within these details are a GUIDE TO THE LAYOUT OF THE PROPERTY ONLY and are NOT DRAWN TO SCALE. Dimensions are approximate.

### Mortgage Information

We can offer independent mortgage advice. Please call us to discuss your requirements. Your home may be repossessed if you do not keep up repayment on your mortgage or any loans secured on it.

### Property Valuations

We have some of the most experienced property valuers in Milton Keynes and would welcome the opportunity to carry out a VALUATION and MARKET APPRAISAL of your home.

### Viewing Arrangements

Please call us to make an appointment to view this property.

Monday to Friday 9.00 am - 6.00 pm  
Saturday 9.00 am - 4.00 pm  
Sunday CLOSED

