



**Hayward
Tod**

2 bedroom Apartment | Chapel Brow | Carlisle | CA1 2PP
Guide Price £117,500





Spacious ground floor apartment with allocated parking.
Open plan living kitchen. En-suite master bedroom.
Convenient for Carlisle, M6, Scotby and public transport.

entrance hallway | open plan living dining kitchen | master bedroom with en-suite shower | family bathroom | bed 2 | allocated & visitor parking space | double glazing | electric heating | communal gardens | EPC pending | council tax band B

APPROXIMATE MILEAGES

Scotby 1 | M6 motorway 0.9 | Carlisle 2.1 | Penrith - North Lakes 20 | Newcastle International Airport 54.8

WHY CHAPEL BROW?

A small development of apartments in a most convenient location on the eastern edge of the city, which is well served by public transport and a short distance from a number of shops and services including the village of Scotby. Just a few minutes drive from the M6 motorway and A69 the property is well connected to the wider region, with Carlisle Golf Club being just a short drive to the east and the Lake District National Park being within 30 minutes drive to the south.

ACCOMMODATION

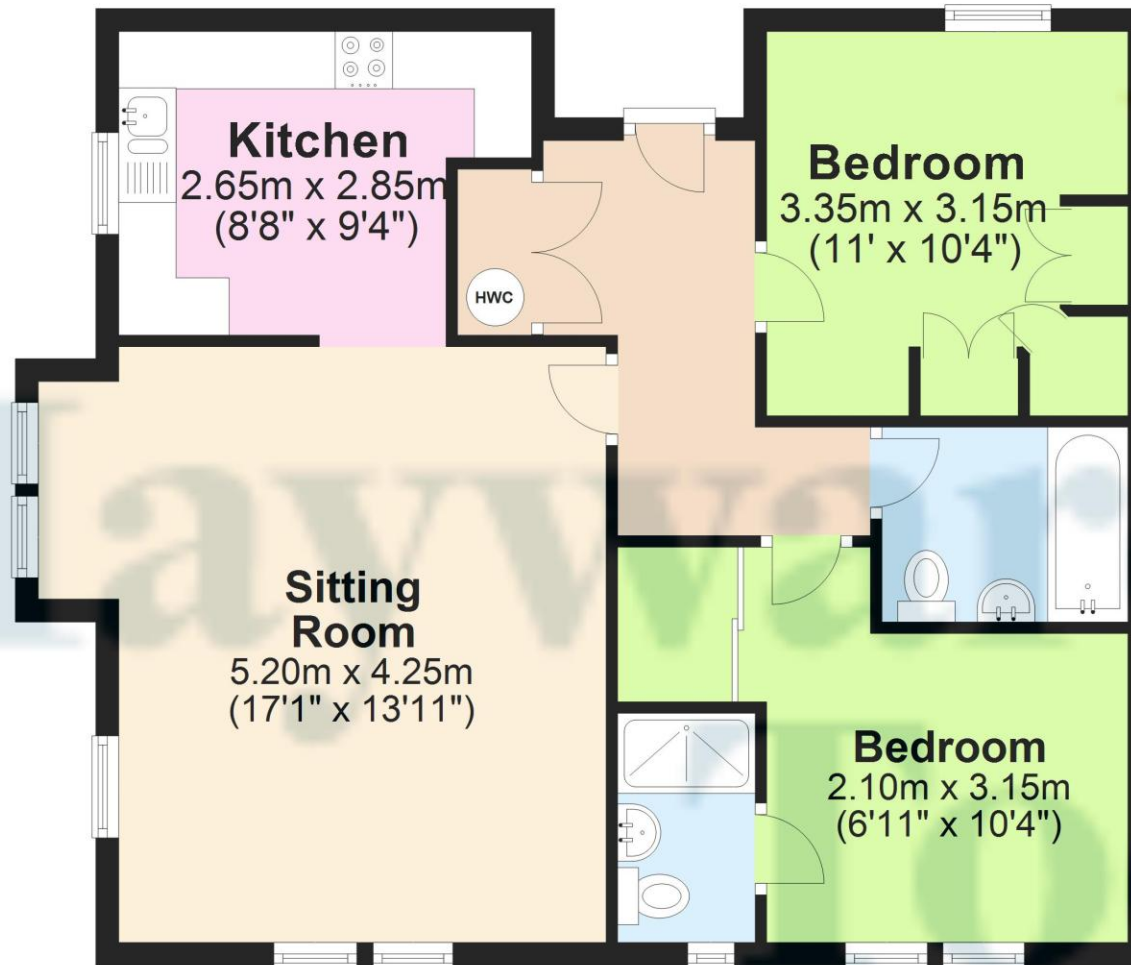
The single level living space occupies a bright and airy corner plot on the ground floor of the building and offers good open plan living. The master bedroom, complete with en-suite shower also benefits from a built in wardrobe. The second bedroom is also a double room and has fitted wardrobes. The main bathroom is part tiled. The living space is dual aspect and open to the modern fitted kitchen. Externally there is an allocated parking space and visitor parking. The property also benefits from use of the communal garden.





Ground Floor

Approx. 69.4 sq. metres (747.4 sq. feet)



Total area: approx. 69.4 sq. metres (747.4 sq. feet)

Contact

6 Paternoster Row,
Carlisle Cumbria CA3 8TT

01228 810 300
info@haywardtod.co.uk
haywardtod.co.uk

Agents note

Whilst every care has been taken to prepare these sales particulars, they are for guidance purposes only. All measurements are

approximate and are for general guidance purposes only and whilst every care has been taken to ensure their accuracy, they should not be relied upon and potential buyers are advised to recheck the measurements.