

- Two Bedroom Terrace House
- Newly Fitted Boiler
- Gas Central Heating
- UPVC Double Glazing

Red Barns, Newcastle Upon Tyne, Tyne & Wear

Two bedroom terraced house located in the heart of Newcastle's East End. The property is close to the city centre and benefits from two bedrooms, bathroom, living room and kitchen. ****GAS CENTRAL HEATING**** ****UPVC DOUBLE GLAZING****

£129,950



Property Description

SEVEN KEYS welcome to the market this two bedroom terrace house located close to Newcastle City Centre, in the heart of Ouseburn. The property benefits from two double bedrooms, living room, kitchen and bathroom. Newly fitted boiler provides gas central heating throughout.

Book your viewing online today at SevenKeys.co.uk.

LIVING ROOM

Double glazing to the front of the property, carpet, radiator and large under-stairs storage cupboard.

KITCHEN/DINER

Kitchen with a range of wall and base units, integrated electric hob, oven and extractor unit, plumbing for washing machine, stainless steel sink and drainer with mixer tap, freestanding fridge/freezer, vinyl flooring and radiator. Large walk-in larder storage cupboard and frosted door leading into garden.

BEDROOM ONE

Generous double bedroom with double glazed windows, radiator, cupboard and laminate flooring.

BEDROOM TWO

Double bedroom with double glazed windows, radiator, light operated extractor fan and laminate flooring.

BATHROOM

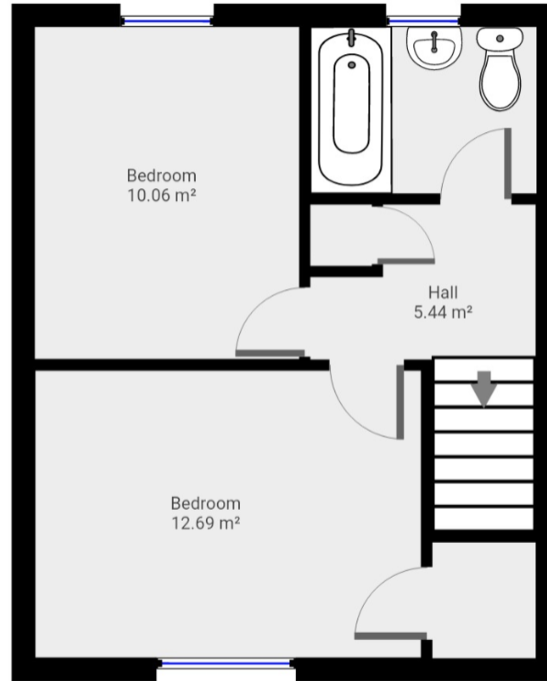
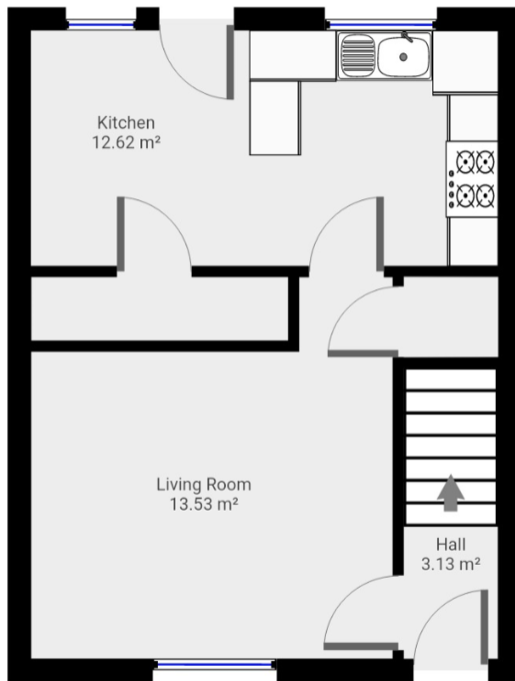
Fitted with white suite comprising of panelled bath with overhead shower, wash basin, low level toilet, tiled walls and vinyl flooring. Light entered via frosted glass UPVC window.

HALLWAY

Carpet leading from the downstairs hall, stairs and upstairs landing with linen/airing cupboard.







Score	Energy rating	Current	Potential
92+	A		
81-91	B		87 B
69-80	C	72 C	
55-68	D		
39-54	E		
21-38	F		
1-20	G		

Boston House, Unit 2 Fifth Avenue,
 Team Valley Trading Estate,
 Gateshead, Tyne And Wear, NE11
 0HF

www.sevenkeys.co.uk
 0191 4971797
info@sevenkeys.co.uk

Agents Note: Whilst every care has been taken to prepare these particulars, they are for guidance purposes only. All measurements are approximate and for general guidance purposes only and whilst every care has been taken to ensure their accuracy, they should not be relied upon and potential buyers/tenants are advised to recheck the measurements