



jordanfishwick

NEW BROUGHTON
Kempster Gardens



Kempster Gardens, New Broughton M7 1AE

Price £225,000



The Property

Investors Only. Tenanted till January 2022.
VIRTUAL TOUR OR PHYSICAL VIEWINGS AVAILABLE
<https://www.youtube.com/watch?v=7sF2xkvq6pk>

WOW! What a house, the garden here is a really special find. We are pleased to offer this stunning 3 bedroom Maisonette house in New Broughton offering a fantastic buy to let opportunity. Rented until January 2022 at £1000 per month. The house briefly comprises of entrance hall, W/C and cloakroom, modern fitted kitchen and large living room diner with bi-folding doors leading to the large garden. To the first floor, two double bedrooms, one single, and a well appointed four piece family bathroom. There is on-street parking

available.

PLEASE BE ADVISED THAT THERE IS AN APARTMENT ABOVE THIS PROPERTY

Directions

- BUY TO LET INVESTMENT
- Rented until January 2022
- £1000 Rental Income
- Three Bedroom Maisonette
- Large Garden
- Ground Floor W/c
- Well Presented Throughout
- 5 Minute Drive to City Centre
- EPC Rating - B

Postcode - M7 1AE

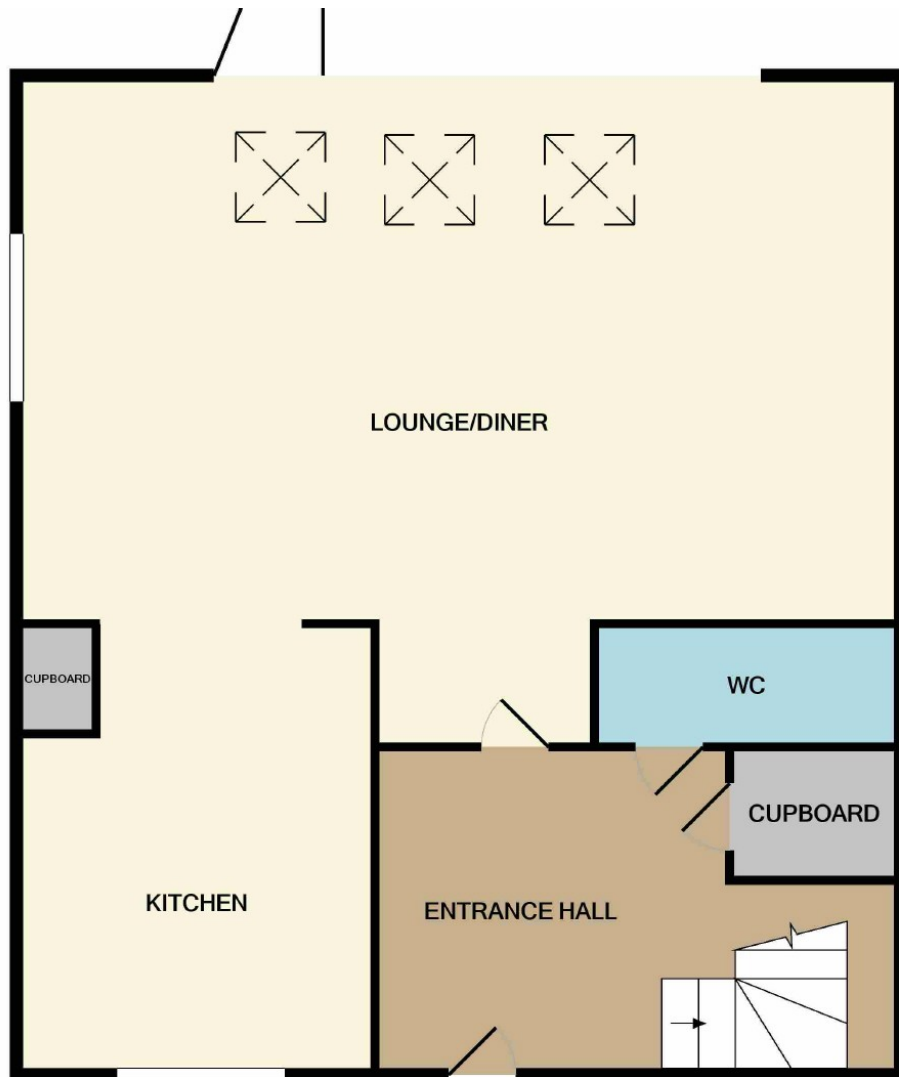
EPC Rating - B

Floor Area - sq ft

Local Authority - Salford Council

Council Tax - Band B





GROUND FLOOR



1ST FLOOR

Measurements are approximate. Not to scale. Illustrative purposes only
Made with Metropix ©2021



These particulars are believed to be accurate but they are not guaranteed and do not form a contract. Neither Jordan Fishwick nor the vendor or lessor accept any responsibility in respect of these particulars, which are not intended to be statements or representations of fact and any intending purchaser or lessee must satisfy himself by inspection or otherwise as to the correctness of each of the statements contained in these particulars. Any floorplans on this brochure are for illustrative purposes only and are not necessarily to scale.

Offices also at:
Chorlton | Didsbury | Disley | Glossop | Hale | Macclesfield | Manchester | Sale | Wilmslow | Withington

68 The Arches, Whitworth Street West, Manchester, M1

0161 833 9499

manchester@jordanfishwick.co.uk
www.jordanfishwick.co.uk