



## 28 Heather Close, Oswestry, SY11 2UU

**£475 Per month**

Available beginning of March!!! We are pleased to offer this modern two bedroom End-terraced property for rent. Located close to the town centre all amenities are close at hand. The property comprises hall, lounge, kitchen/diner, two bedrooms and bathroom. There are gardens front and rear and two off street parking spaces. Professional Persons Only, No Smokers or pets. This rental requires one months rent in advance and £575 as a damage deposit. A credit check will be carried out on every Applicant and Guarantor wanting to be named on the contract. This is £50 per applicant/Guarantor. There is also a fee of £150 to draw up the contract. ((The credit and admin fees are Non refundable)



## 28 Heather Close, Oswestry, SY11 2UU

### DIRECTIONS

From our Oswestry office take the Salop road out of the town. Proceed out of town before turning left onto College road. Continue along College road before turning right onto Hazel Grove. Turn first right onto Maple Avenue then left onto Llys Place. Take the first turning on the right onto Heather Avenue where the property will be identified by our To Let board.

### LOUNGE

Window to the front, radiator, stairs off with understairs storage, uPVC door to front, gas fire with marble hearth.



### KITCHEN/DINER

Base and wall units, Single stainless steel sink drainer unit, plumbing for washing machine, space for fridge/freezer, radiator, window to the side and rear aspect, part tiled walls.



### LANDING

With doors leading to the bedrooms and bathroom.

### BEDROOM ONE

Window to the rear, radiator and built in cupboard.



## 28 Heather Close, Oswestry, SY11 2UU

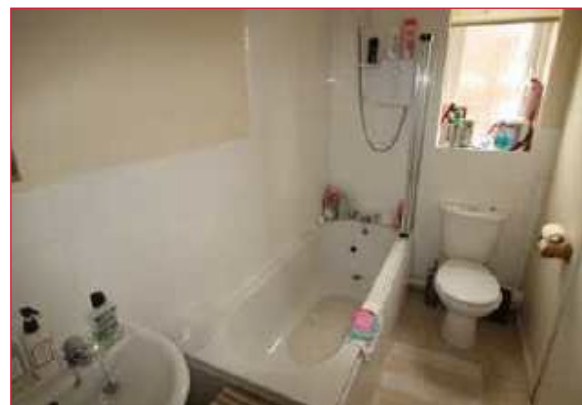
### BEDROOM TWO

Radiator and window to the front.



### BATHROOM

Three piece suite in white with a Triton shower over bath, vinyl flooring, heated towel rail, airing cupboard off with tank and Worcester combi boiler.



### FRONT GARDEN

Lawned with driveway to the side for 2-3 cars.

### REAR GARDEN

Lawned with paved patio area enclosed by fencing, shed.



### ENVIRONMENT IMPACT RATING

### VIEWING

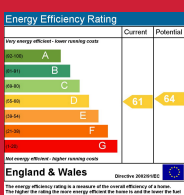
STRICTLY BY PRIOR APPOINTMENT WITH TOWN AND COUNTRY I.E.A ON OSWESTRY 679631



TOWN & COUNTRY

# 28 Heather Close, Oswestry, SY11 2UU

You may download, store and use the material for your own personal use and research. You may not republish, retransmit, redistribute or otherwise make the material available to any party or make the same available on any website, online service or bulletin board of your own or of any other party or make the same available in hard copy or in any other media without the website owner's express prior written consent. The website owner's copyright must remain on all reproductions of material taken from this website.



# TOWN & COUNTRY