



1,092
sq ft



3



2



1

REDBRIK
ESTATE AGENTS

Helping you find
your home at...

Manor House Court, Chesterfield
Guide Price £210,000 to £215,000

This contemporary styled and exceptionally maintained three bedroom end town house is located in the market town of Chesterfield.

- Three Bedroom End Town House
- Modern Fitted Kitchen With Integrated Appliances
- Generous Open Plan Living & Dining Area
- Living Room With Juliet Balcony
- Three Good Sized Bedrooms
- Principle Bedroom With En-Suite & Fabulous Views
- Pantry & Downstairs W/C
- Enclosed Rear Garden With Lawn & Patio Area
- Off Road Parking
- Energy Rating - B, Tenure; Leasehold.





£210,000 to £215,000 (Guide Price)

This is for my family...

- The ground floor offers ample living & dining space perfect for a growing family.
- The three bedrooms are all well-proportioned alongside a luxury family bathroom.
- You'll love the enclosed rear garden, a family space which is excellent for children to play.
- The property is flooded with natural light.
- There are a number of highly regarded schools nearby for all ages.

Buying just for me, or with my partner...

- Exceptionally presented and contemporary styled, the property is ready to move straight into.
- The principle bedrooms offers an en-suite shower room and ample storage.
- To the rear is a low maintenance garden which presents an excellent space for entertaining friends and family.
- Situated just outside Chesterfield town centre, local shops and amenities are all close to hand.

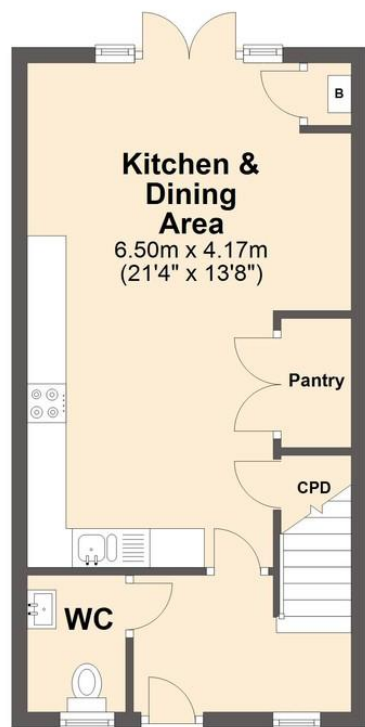
I am looking for an investment...

- We think the property could rent for £850 PCM, a yield of 4.86%.
- Tenants would love the location, generous living space and principle bedroom. Tenure: Freehold

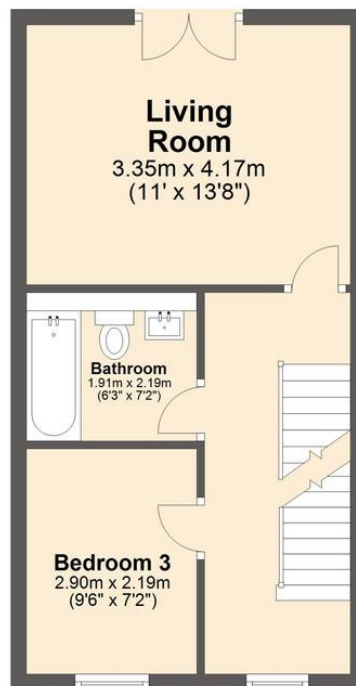




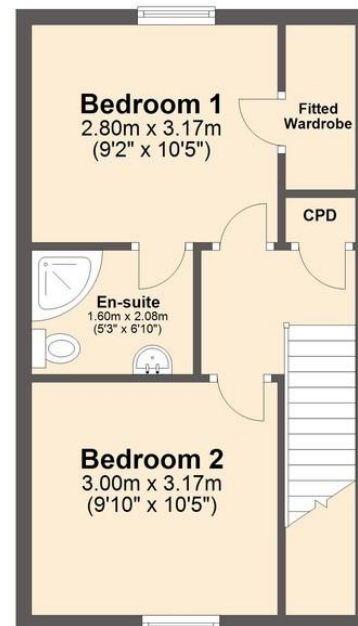
Ground Floor
Approx. 34.9 sq. metres (375.6 sq. feet)



First Floor
Approx. 34.9 sq. metres (375.6 sq. feet)



Second Floor
Approx. 31.7 sq. metres (341.5 sq. feet)



Total area: approx. 101.5 sq. metres (1092.7 sq. feet)

We endeavour to make these particulars as accurate as possible, but they should only be used as guidance and they do not constitute any part of the contract. All measurements are approximate and no guarantees are made to the services, heating systems, appliances (if any) or fittings as to their working order and no warranty can be given or implied.

You may download, store and use this material for your own personal use and research. You may not republish, retransmit, redistribute or otherwise make the material available to any party or make the same available on any website, on or offline service or hard copy without the website owner's express written consent. The website owner's copy right must remain on all reproductions of material taken from this website.