

COUNTRY  
&  
EQUESTRIAN



THE COACH HOUSE  
WYMONDHAM





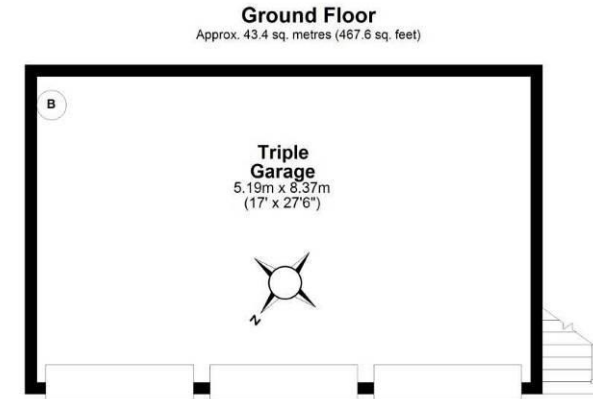
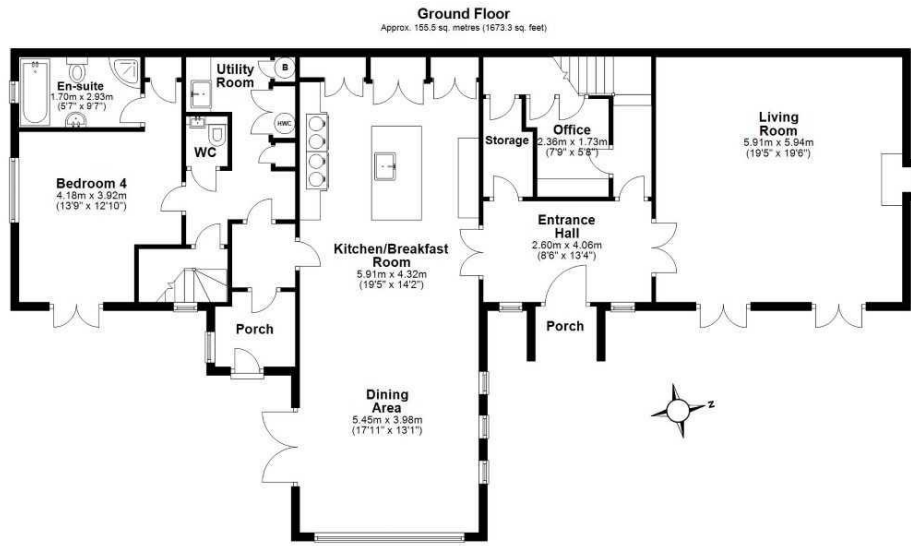




## *A Stone Residence With The Feel Of An Old Country House Combined With Modern Qualities of Living*

Set down a long sweeping driveway behind automated gates, this former coach house has been recently refurbished to an extremely high standard with four bedrooms and four bathrooms to the main house, plus a self-contained annexe with triple garage under with its own living room kitchenette and en-suite to double bedroom. The main house boasts a spacious entrance hall which leads to a large drawing room with feature wood burner and high ceilings. The kitchen has been recently refitted with a designer no expense spared kitchen, including an ever-hot style aga, open plan dining and sitting area, utility, downstairs cloakroom and study. Plus a ground floor bedroom with ensuite, currently used as a further reception room, but gives great future proofing. To the first floor, a master suite has a large dressing area leading to feature glass gable end windows, with a second double bedroom with ensuite and walk in wardrobe. A second staircase from the other side of the property leads to another large double bedroom with ensuite and walk in wardrobe (there is no direct access upstairs to the other bedrooms). This could suit older children / multi-generational living

Landscaped pet proof gardens are positioned to the front of the property, with well-maintained area of lawn and patio for seating.



Total area: approx. 267.7 sq. metres (2881.5 sq. feet)  
This floor plan is not to scale. They are for guidance only and accuracy is not guaranteed. Plan was produced by ADR Energy Assessors  
Plan produced using PlanUp.

Total area: approx. 86.1 sq. metres (926.3 sq. feet)  
This floor plan is not to scale. They are for guidance only and accuracy is not guaranteed. Plan was produced by ADR Energy Assessors  
Plan produced using PlanUp.

Moore V Ltd trading as Moores Estate Agents gives notice that: 1. These particulars do not constitute an offer or contract or part thereof. 2. All descriptions, photographs and plans are for guidance only and should not be relied upon as statements or representations of fact. All measurements are approximate and not necessarily to scale. Any prospective purchaser must satisfy themselves of the correctness of the information within the particulars by inspection or otherwise. 3. Moore V Ltd trading as Moores Estate Agents does not have any authority to give any representations or warranties whatsoever in relation to this property (including but not limited to planning/building regulations), nor can it enter into any contract on behalf of the Vendor. 4. Moore V Ltd trading as Moores Estate Agents does not accept responsibility for any expenses incurred by prospective purchasers in inspecting properties which have been sold, let or withdrawn. 5. If there is anything of particular importance to you, please contact this office and we will try to have the information checked for you.

**COUNTRY** [www.countryequestrianhomes.com](http://www.countryequestrianhomes.com)  
**EQUESTRIAN** [office@countryequestrianhomes.com](mailto:office@countryequestrianhomes.com)

**OAKHAM**  
36 High Street  
LE15 6AL  
01572 757979

**UPPINGHAM**  
2 Orange Street  
LE15 9SQ  
01572 821935

**MELTON**  
25 Burton Street  
LE13 1AE  
01664 491610

**STAMFORD**  
1 Sheep Market  
PE9 2RB  
01572 821935

**GRANTHAM**  
The London Platform  
NG31 6BT  
01476 855618

**PETERBOROUGH**  
The London Platform  
PE1 1QL  
01733 788888

