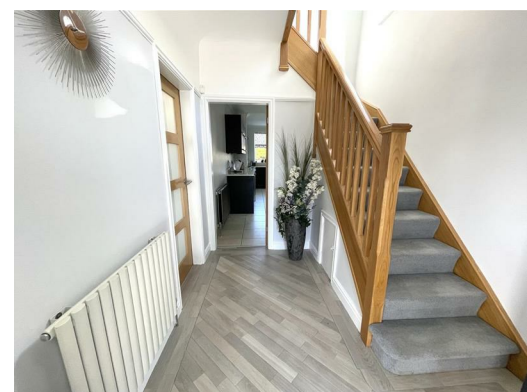




**163 Bowring Park Avenue, Liverpool, Merseyside, L16 2LE**

**Offers over £300,000**

Alpha-move are delighted to offer this fantastic three bedroom extended semi detached property on Bowring Park Ave, close to schools, parks, and all local amenities, as well as major transport links for road and rail. The property briefly comprises of porch, hallway, front reception, rear reception, and open plan kitchen diner with fully integrated appliances. To the first floor are three double bedrooms, all with fitted wardrobes and family bathroom. Externally the property has off street parking at the front, and a large mature garden and sun terrace at the rear. This property offers high quality family accommodation with the potential for further expansion. Viewing is highly recommended to fully appreciate this opportunity.





# 163 Bowring Park Avenue, Liverpool, Merseyside, L16 2LE

## Entrance Porch

8'2" x 4'3" (2.5 x 1.3)

Composite door to front aspect.

## Entrance Hall

10'9" x 7'2" (3.3 x 2.2)

Upvc glazed door to front aspect, karndean flooring, single radiator, doors to all rooms.

## Reception Room One

20'8" x 10'9" (6.3 x 3.3)

Upvc square bay window to front aspect, Karndean flooring, radiator.

## Reception Room Two

10'2" x 9'2" (3.1 x 2.8)

Upvc french doors and Windows to rear aspect, karndean flooring, radiator

## Kitchen

14'1" x 19'8" (4.3 x 6.01)

Upvc doors and window to rear aspect, tiled flooring, full fitted kitchen with fully integrated neff appliances including double oven, microwave, warmer tray, dishwasher and 5 burner hob and extractor with granite worktops. Radiators.

## Bedroom One

11'9" x 9'10" (3.6 x 3.00)

Upvc windows to front aspect, fitted wardrobes, radiator.

## Bedroom Two

11'1" x 8'10" (3.4 x 2.7)

Upvc windows to rear aspect, fitted wardrobes, radiator

## Bedroom Three

9'2" x 10'1" (2.8 x 3.08)

Upvc window to front aspect, fitted wardrobes, radiator.

## Family Bathroom

7'2" x 4'11" (2.2 x 1.5)

Upvc window to front aspect, wash hand basin and drawer unit, low level wc, walk in shower.

## Stairs And Landing

7'6" x 6'6" (2.3 x 2)

Upvc window to side aspect.

