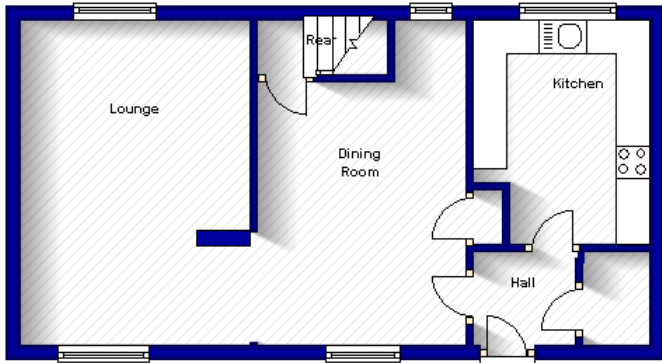


6 Balmoral Terrace, Cove

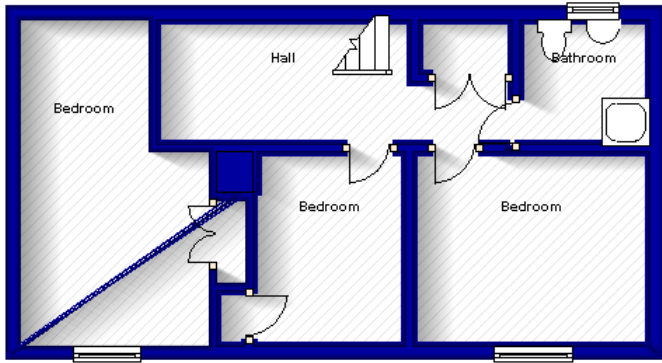
Ground Floor

Approx. 42.9 sq. metres (462.3 sq. feet)



First Floor

Approx. 42.4 sq. metres (456.5 sq. feet)



Total area: approx. 85.4 sq. metres (918.8 sq. feet)

The above particulars are for guidance only, no liability for any errors or omissions will be accepted by Aberdeen Property Leasing Ltd.