

192 Monton Road, Monton, Manchester, M30 9PY

Tel: 0161 707 7584

Email: monton.sales@ascendproperties.com,

monton.lettings@ascendproperties.com

www.ascendproperties.com

Ascend

Built on higher standards



Petal Court, Worsley, Manchester

£725 PCM

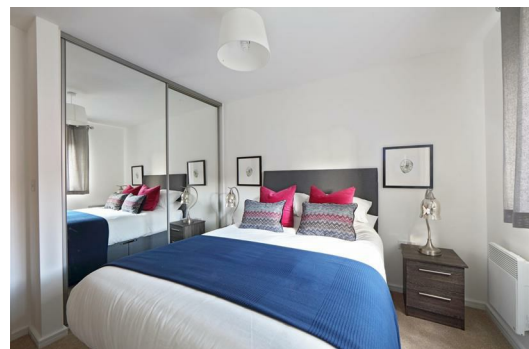
Welcome to DiFent homes at Heyfields. Located in Walkden, Heyfields is an impressive new development of 66 family homes and 72 apartments, 7 miles from Manchester city centre. Set in a picturesque location and within easy reach of the city centre, this development is ideal for both growing families and young professional couples.

Want something cosy and contemporary? Don't compromise. With our Lincoln apartments, you get a spacious living room, fully kitted out open-plan kitchen and dining area, two beautiful double bedrooms and a family size bathroom with separate bath and shower. Comfortable, and with plenty of up-to-the-minute features and appliances, our Lincoln apartments offer an expansive, homely feel. Energy efficient, there is quality flooring throughout, and topnotch security means you can enjoy peace of mind as well as comfort.

Whilst this property is a new build property, it has been previously let. All properties are maintained and inspected once a tenant has moved out in order to keep the property to a high standard.

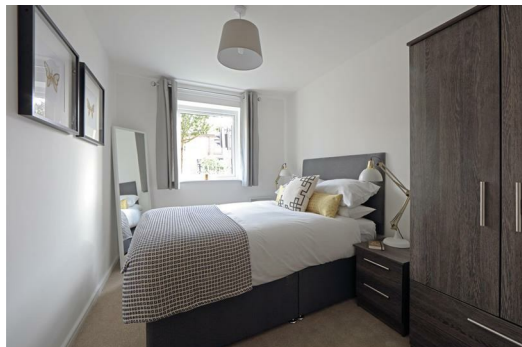
Images are demonstrative of this property type. The images are therefore not plot or site specific and spec may vary slightly. Properties are let unfurnished.

Available 28th May 2021



Ascend

Built on higher standards



Energy Efficiency Rating		Environmental Impact (CO ₂) Rating	
Current	Target	Current	Target
Energy A	Energy B	Enviro A	Enviro B
Energy B	Energy C	Enviro B	Enviro C
Energy C	Energy D	Enviro C	Enviro D
Energy D	Energy E	Enviro D	Enviro E
Energy E	Energy F	Enviro E	Enviro F
Energy F	Energy G	Enviro F	Enviro G
Energy G	Energy H	Enviro G	Enviro H
Energy H	Energy I	Enviro H	Enviro I
Energy I	Energy J	Enviro I	Enviro J

Energy Efficiency Rating: Current **B**, Target **B** (75/75)
 Environmental Impact (CO₂) Rating: Current **B**, Target **B** (47/47)