

241 Deansgate, Manchester, Lancashire, M3 4EL

Tel: 0161 637 8336

Email: [contactus@ascendproperties.com](mailto:contactus@ascendproperties.com)

[www.ascendproperties.com](http://www.ascendproperties.com)

# Ascend

Built on higher standards



City Link, Hessel Street, Salford

£675 PCM

Luxury and convenience in one - that's what the City Link development is about. The centrepiece of this two bedroom apartment is the open-plan kitchen/lounge, with a tiled kitchen area, high quality seats, tables and sofas and a large window which makes the place come to life.

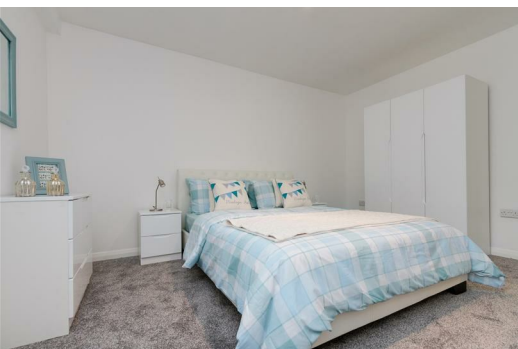
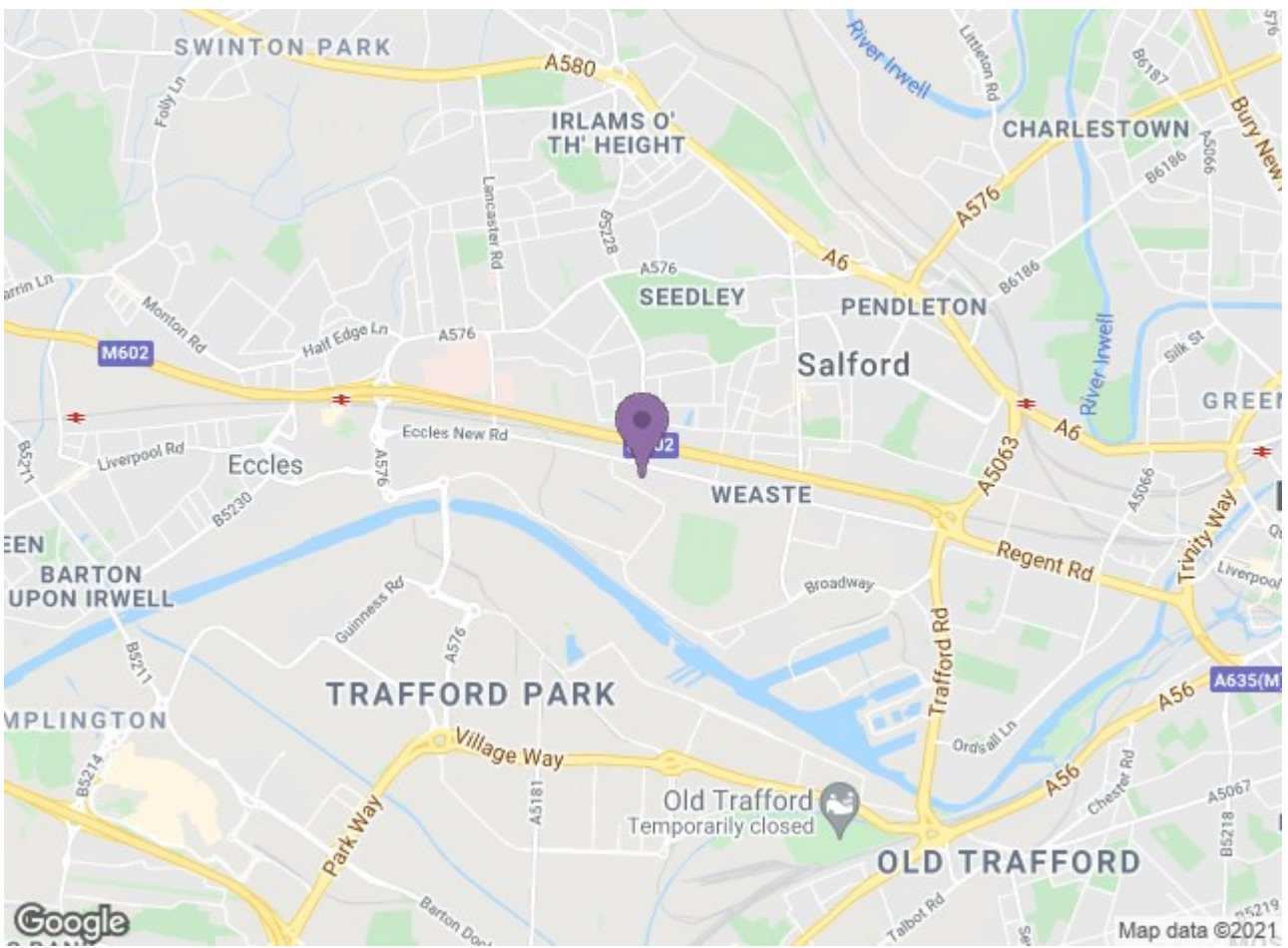
One bedroom is a luxury double - with double the space you'd get in your average flat. You'll be able to stretch out, leave clothes on the floor and there'll still be room to spare. Plus there's a soft carpet in each made for bare feet. The other is a nice sized room that can accommodate a three quarter sized bed. You'll also benefit from a nicely-sized bathroom with a modern white finish.

City Link is also just opposite a bus stop and the Weaste tram stop, which means you're only five minutes away from MediaCity and an autograph from Gary Lineker. Travelling to the city centre couldn't be easier.

And just so you know, the pictures for this apartment are for marketing purposes only, so the internal fixtures, fittings and furnishings may vary.

Available 12th June 2021





Energy Efficiency Rating		Environmental Impact (CO <sub>2</sub> ) Rating	
Current	Potential	Current	Potential
Energy A	Energy D	Enviro A	Enviro D
Energy B	Energy E	Enviro B	Enviro E
Energy C	Energy F	Enviro C	Enviro F
Energy D	Energy G	Enviro D	Enviro G
Energy E	Energy H	Enviro E	Enviro H
Energy F	Energy I	Enviro F	Enviro I
Energy G	Energy J	Enviro G	Enviro J

Energy Efficiency Rating: Current 66, Potential 81  
 Environmental Impact (CO<sub>2</sub>) Rating: Current 76, Potential 76