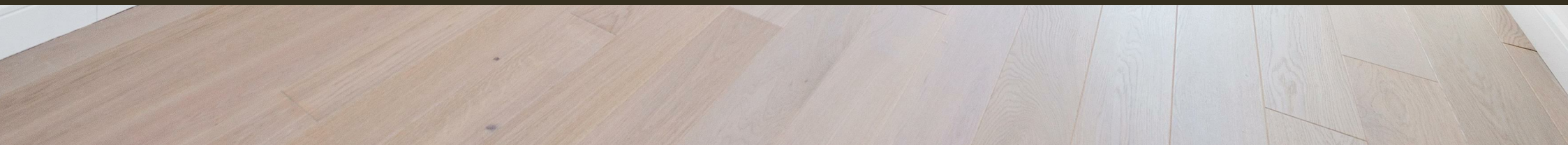




Lockside House, 3 Thurstan Street  
London SW6

GARTON JONES.COM



Lockside House, 3 Thurstan Street  
London, SW6

GARTON JONES.COM

8 Gatliff Road  
Chelsea  
London  
SW1W 8DP

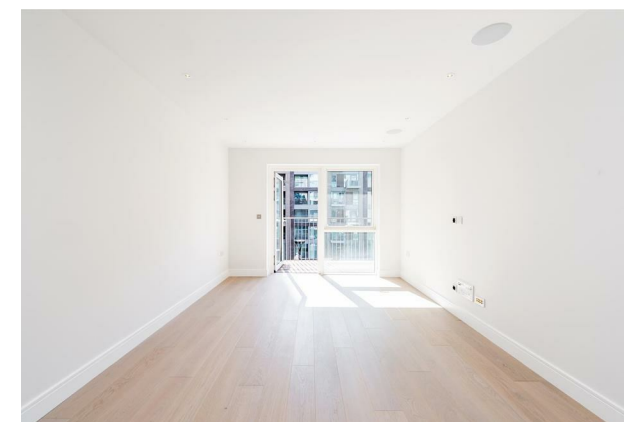
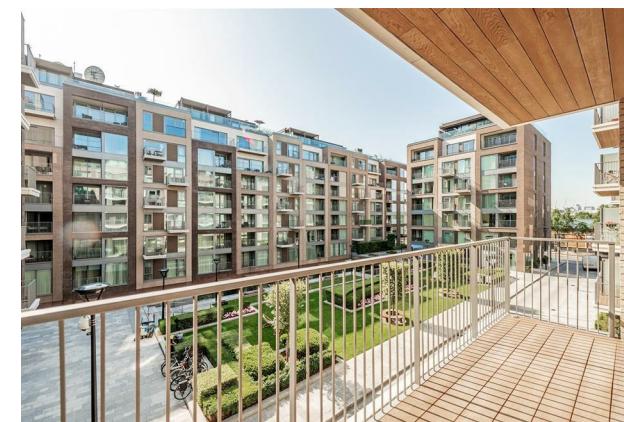
Lettings:  
+44 (0) 20 7730 5007  
gws@gartonjones.com  
www.gartonjones.com

£500 Per Week

A beautifully presented un-furnished ONE DOUBLE bedroom apartment to rent, located in Lockside House, one of the buildings on Chelsea Creek development in Fulham. Comprising of an open plan reception room with access to a private balcony, modern kitchen with Siemens integrated appliances including a wine cooler, induction hob, dishwasher, oven and fridge freezer. The apartment also comes with SECURE PARKING. Lockside House is situated in one of London's most elegant dockside developments, 24 HOUR CONCIERGE. Spa and fitness suite with Swimming pool. King's Road and Chelsea Harbour are easily accessible and Imperial Wharf Station is just a few minutes' walk.

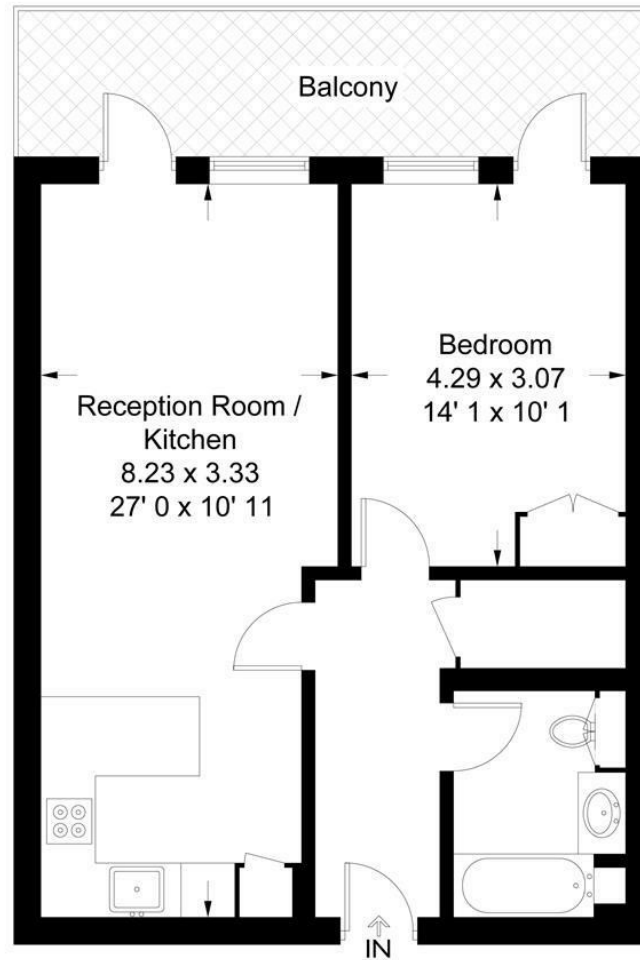
Please note furniture may differ to that shown in current photos

- 585sq.ft (54.4sq.m)
- 1 Double Bedroom
- Luxury Bathroom
- Open Plan Reception Room
- Kitchen with Siemens Integrated Appliances
- Private Balcony
- 24 Hour Concierge
- Secure Parking Available
- Resident's Leisure Suite with Swimming Pool, Spa & Gymnasium
- Walking Distance to Imperial Wharf Overground Station



**Lockside House**

Approximate Gross Internal Area = 585 sq ft / 54.4 sq m



Not to scale, for guidance only and must not be relied upon as a statement of fact  
All measurements and areas are approximate only and have been prepared in  
accordance with the current edition of the RICS Code of Measuring Practice

