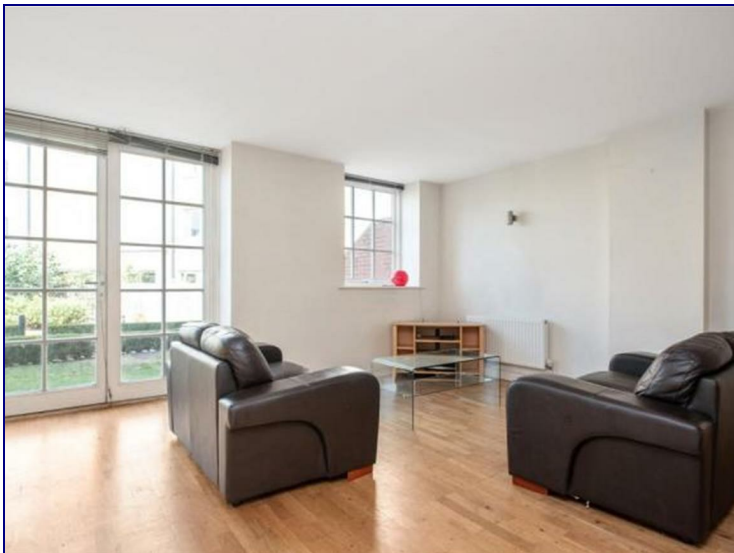



15 Enfield Road, London, N1 5EN



£3,142 Per Month

****STUNNING 3 BED 3 BATH IN HOXTON**** The property consists of a well proportioned three piece bathroom, a considerably sized bedroom which includes large built in storage, and a generously sized open planed reception room and lounge which is large enough to accommodate dining. The kitchen comes set with a built in electric hob and oven, and a built in microwave. Although the property is generally new build and purpose built, the property does obtain some wonderful original features of Victorian properties such as the outside appearance of the development and the sash windows included in the property. The property is ideally located close to all the local shops and amenities on Kingsland Road along with bus access routes in the the city center. There is also Dalston Kingsland Station located 0.3 miles away and Dalston Junction station which is 0.4 miles away.



Energy Efficiency Rating		
	Current	Potential
<i>Very energy efficient - lower running costs</i>		
(92 plus) A		
(81-91) B		
(69-80) C		
(55-68) D		
(39-54) E		
(21-38) F		
(1-20) G		
<i>Not energy efficient - higher running costs</i>		
England & Wales	EU Directive 2002/91/EC	

Environmental Impact (CO ₂) Rating		
	Current	Potential
<i>Very environmentally friendly - lower CO₂ emissions</i>		
(92 plus) A		
(81-91) B		
(69-80) C		
(55-68) D		
(39-54) E		
(21-38) F		
(1-20) G		
<i>Not environmentally friendly - higher CO₂ emissions</i>		
England & Wales	EU Directive 2002/91/EC	