

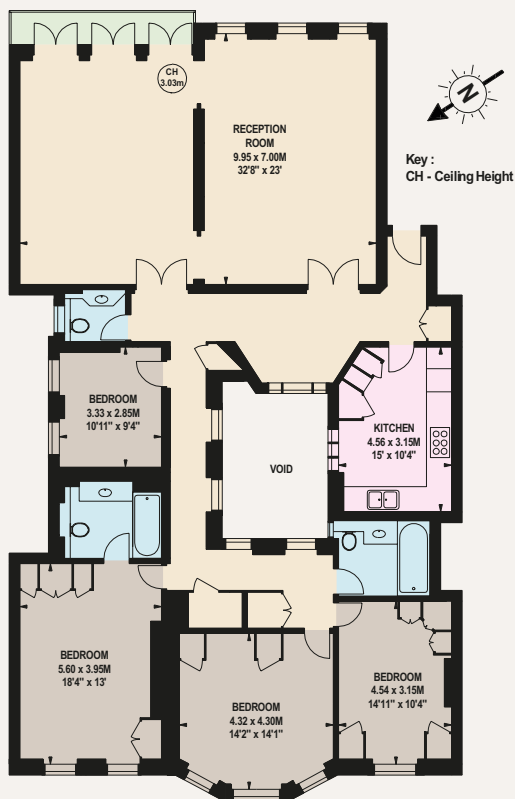


KENSINGTON COURT MANSIONS

KENSINGTON COURT | KENSINGTON W8



A BRIGHT AND WELL-PROPORTIONED FOUR BEDROOMED LATERAL APARTMENT ON THE SECOND FLOOR OF THIS HIGHLY SOUGHT, SMART RED BRICK MANSION BUILDING



SECOND FLOOR

Approximate Gross Internal Area
202.89 sq m / 2,184 sq ft (Excluding Void)

Illustration for identification purposes only, measurements are approximate, not to scale.

Measuring nearly 2,200 sq ft, with views over private communal gardens and boasting its own private balcony spanning the full width of the grand reception room, this elegant apartment with its high ceilings, has an abundance of living space, with its interconnected drawing room and dining rooms, separate kitchen / breakfast room, a master suite with bathroom and three further double bedrooms, bathroom and guest cloakroom. The block further benefits from a resident porter and lift.



Kensington Court Mansions is quietly situated, but is within a few minutes' walk of the wide range of shopping and transport amenities of Kensington High Street and the open spaces of Kensington Gardens.



ACCOMMODATION & AMENITIES

- Drawing Room ■ Dining Room ■ Kitchen/Breakfast Room
- Master Bedroom with En Suite Bathroom
- Three Further Double Bedrooms ■ Bathroom
- Guest Cloakroom ■ Balcony ■ Vault Storage
- Lift ■ Porter ■ Communal Gardens

TERMS

Price: £3,950,000
Share of Freehold with 953 years underlying.
Service Charges: £8,424 per annum, to include sinking fund contribution.

OnTheMarket.com

NVP

NICOLAS VAN PATRICK
INCORPORATING
HOBART SLATER

6-8 MONTPELIER STREET,
LONDON SW7 1EZ
SALES | +44 (0)20 7581 8277
LETTINGS | +44 (0)20 7590 1200
info@nicolasvanpatrick.com
www.nicolasvanpatrick.com

These details have been prepared for general guidance only and should not be relied upon by prospective purchaser/tenants who before proceeding must check and otherwise satisfy themselves as to the property and the nature, state and availability of any facility or service.

Brochure by TwentyOneFifty Tel: 020 8778 2150