

TO LET



Millicent Grove, Palmers Green, London, N13
£1,375 Per Calendar Month

Anthony Webb
ESTATE AGENTS

Millicent Grove, Palmers Green, London, N13

A BEAUTIFULLY PRESENTED UNFURNISHED MODERN PURPOSE BUILT TWO BEDROOM APARTMENT WITH BALCONY, TWO BATH/SHOWEROOMS AND GATED ALLOCATED PARKING SPACE.

Top floor (3rd) / Modern development / Spacious Living room with door to balcony / Fitted kitchen with appliances / One double bedroom with en-suite shower room and one good size single bedroom / Spacious bathroom / Double glazing / Gas central heating / Secure communal hallway with entry phone system / Allocated parking space / Easy bus and road links to Wood Green underground station and beyond / Available from the end of June/Early July.

- Two bedroom apartment
- Gated allocated parking
- Living room
- Modern kitchen with appliances
- Two modern bath/shower rooms
- Balcony
- Offered unfurnished
- Available from end of June





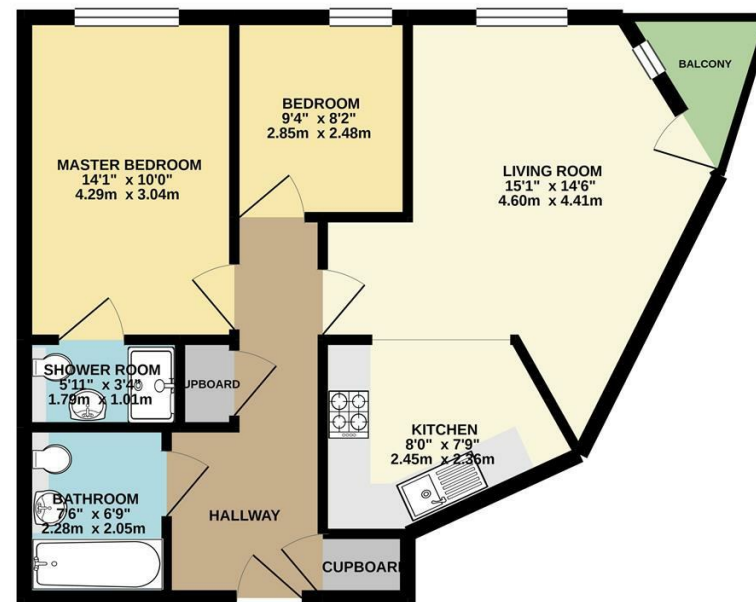
Millicent Grove Palmers Green London N13 6HQ

Tenure:
Gross Internal Area: 700.00 sq ft



Energy Efficiency Rating		Current	Potential
Very energy efficient - lower running costs			
(92 plus) A			
(81-91) B		80	81
(69-80) C			
(55-68) D			
(39-54) E			
(21-38) F			
(1-20) G			
Not energy efficient - higher running costs			
England & Wales		EU Directive 2002/91/EC	
Environmental Impact (CO ₂) Rating		Current	Potential
Very environmentally friendly - lower CO ₂ emissions			
(92 plus) A			
(81-91) B		82	83
(69-80) C			
(55-68) D			
(39-54) E			
(21-38) F			
(1-20) G			
Not environmentally friendly - higher CO ₂ emissions			
England & Wales		EU Directive 2002/91/EC	

SECOND FLOOR
700 sq.ft. (65.0 sq.m.) approx.



TOTAL FLOOR AREA: 700 sq ft (65.0 sq m) approx.
While every attempt has been made to ensure the accuracy of the floorplan contained here, measurements of doors, windows, rooms and any other items are approximate and no responsibility is taken for any error, omission or mis-statement. This plan is for illustrative purposes only and should be used as such by any prospective purchaser. The services, systems and appliances shown have not been tested and no guarantee as to their operability or efficiency can be given.
Made with Memphis 0/2020

Property particulars as supplied by Anthony Webb Estate Agents are set out as a general outline in accordance with the Property Misdescriptions Act (1991) only for the guidance of intending purchasers of lessees, and do not constitute any part of an offer or contract. Details are given without any responsibility, and any intending purchasers, lessees or third parties should not rely on them as inspection or otherwise as to the correctness of each of them. We have not carried out a structural survey and the services, appliances and specific fittings have not been tested. All photographs, measurements, floor plans and distances referred to are given as a guide only and should not be relied upon for the purchase of carpets or any other fixtures statements or representations of fact, but must satisfy themselves by or of fittings, gardens, roof terraces, balconies and communal gardens as well as tenure and lease details cannot have their accuracy guaranteed for intending purchasers. Lease details, service ground rent (where applicable) are given as a guide only and should be checked and confirmed by your solicitor prior to exchange of contracts. no person in the employment of Anthony Webb has any authority to make any representation or warranty whatever in relation to this property.

348 Green Lanes, Palmers Green, London N13 5TJ
020 8882 7888
palmersgreen@anthonywebb.co.uk
anthonywebb.co.uk

Anthony Webb
ESTATE AGENTS