



Rylett Crescent, London, W12 9RP

£1,595,000

WHITMAN & CO.

SALES · LETTINGS · COMMERCIAL

- Semi detached period property
- Open aspects to front and rear
- Full-width kitchen/dining room
- West facing garden
- 27' Double reception room
- Host of original features

Tenure - Freehold
Local Authority -
Hammersmith and Fulham
Council Tax - Band G

THE PROPERTY

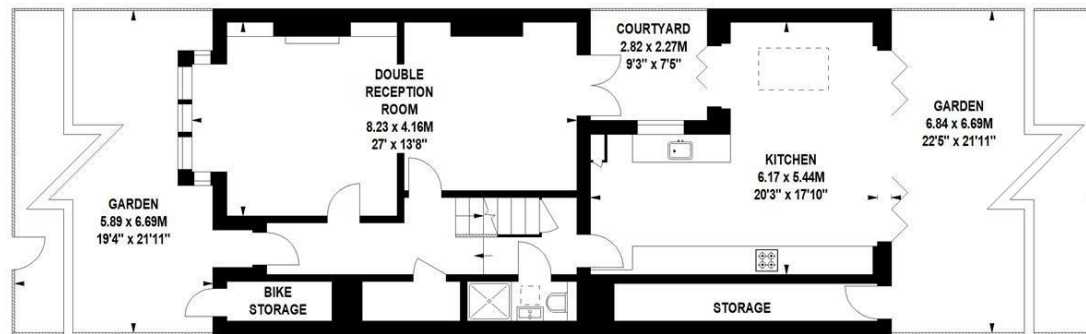
A characterful semi-detached period home with lovely open aspects to front and rear located on this sought after and quiet residential street. The house benefits from high ceilings, period features and an abundance of light with the accommodation comprising a 27' double reception room with marble fireplace, bay window and doors to a secluded courtyard, full-width kitchen/dining room with bespoke kitchen and bi-fold doors onto the garden, private west facing garden with open aspect, three double bedrooms and a study all with open views over gardens, family bathroom, shower room, various storage including a loft, cellar, garden storage and bike store and a generous front garden. Rylett Crescent is a quiet residential street located within a short walk of Ravenscourt Court Park and a number of local shops, cafes and restaurants. Transport links include Stamford Brook and Ravenscourt Park stations, local bus routes and the A4/M4 for routes in and out of London.

Rylett Crescent, W12

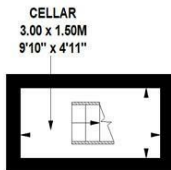
Approximate gross internal area
147.80 sq m / 1591 sq ft
(Including Storage & Bike Storage)
Storage & Bike Storage 6.41 sq m / 69 sq ft



First Floor



Ground Floor



Cellar

Not to scale, for guidance only and must not be relied upon as a statement of fact.
All measurements and areas are approximate only

SITUATION



5-7 Turnham Green Terrace, Chiswick, London, W4 1RG

Tel 020 8747 8800

E-mail sales@whitmanandco.com

Website www.whitmanandco.com