



Westmark Tower, London
W2

GARTON JONES.COM

GARTON JONES
LONDON



Westmark Tower, London , W2

GARTON JONES.COM

8 Gatliff Road
Chelsea
London
SW1W 8DP

Sales +44 (0) 20 7730 5007
gws@gartonjones.com
www.gartonjones.com

£850 Per Week

A TWO BEDROOM apartment of approx. 807 sq.ft (75sq.m) to rent in Westmark Tower, one of the buildings of this new development — West End Gate. The apartment will be FURNISHED and offers an open plan reception with access to a PRIVATE BALCONY, modern kitchen with a marble top breakfast bar and integrated appliances including, induction hob, dishwasher, oven and fridge freezer. There are two luxury bathrooms (inclusive of one en-suite), a large utility cupboard housing a washer dryer and good storage, wood flooring, comfort cooling and under-floor heating. West End Gate offers luxurious central London living with a 24 hour concierge, exclusive use of The Spa, health and fitness suite with an indoor swimming pool, sauna, steam room, gymnasium, Cinema and dining room for private entertaining. Superbly located to the local amenities of Edgware Road and Marble Arch. Transport links include Circle, District, Bakerloo and Hammersmith & City lines and Paddington (Heathrow Express). The green open spaces of Hyde Park are also within walking distance.

Available via Garton Jones Chelsea & Belgravia.

Please note the photos contain virtual furniture and the floor plan is mirrored.

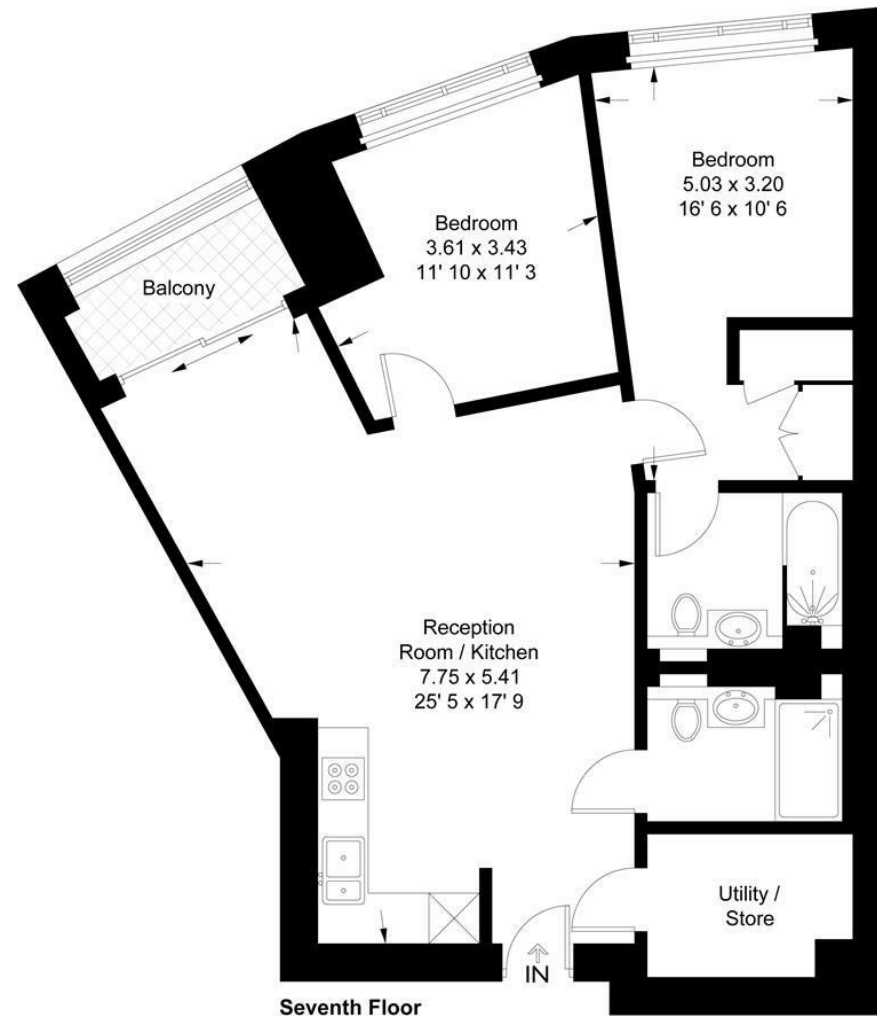
EPC certificate available on request.

- 807 Sq.ft (75 Sq.m)
- Two Double Bedrooms
- Open Plan Reception Room
- Integrated Kitchen
- Two Luxury Bathrooms (One En-Suite)
- 24 Hour Concierge
- Private Balcony
- Underfloor Heating
- Superbly located to the local amenities of Edgware Road and Marble Arch
- Transport links include Circle, District, Bakerloo and Hammersmith & City lines and Paddington (Heathrow Express)



Westmark Tower

Approximate Gross Internal Area = 807 sq ft / 75 sq m



Not to scale, for guidance only and must not be relied upon as a statement of fact
All measurements and areas are approximate only and have been prepared in
accordance with the current edition of the RICS Code of Measuring Practice

