

Whitakers

Estate Agents



Tower Park Mews

, HULL, HU8 9BX

£80,000



Tower Park Mews

, HULL, HU8 9BX

£80,000



Entrance

Via a composite glazed door

Entrance hall

With solid wood flooring, neutral decor and spacious.

Bedroom One

12'0" x 10'10" (3.650 x 3.313)

The huge bedroom has a range of fitted furniture offering ample storage, a radiator and a uPVC double glazed window to the front aspect.

Living/Dining/Entertaining

20'8" x 13'9" (6.301 x 4.198)

The living area is huge, with fresh neutral decor and a uPVC double glazed bay sash windows, two radiators and carpet flooring.

Kitchen

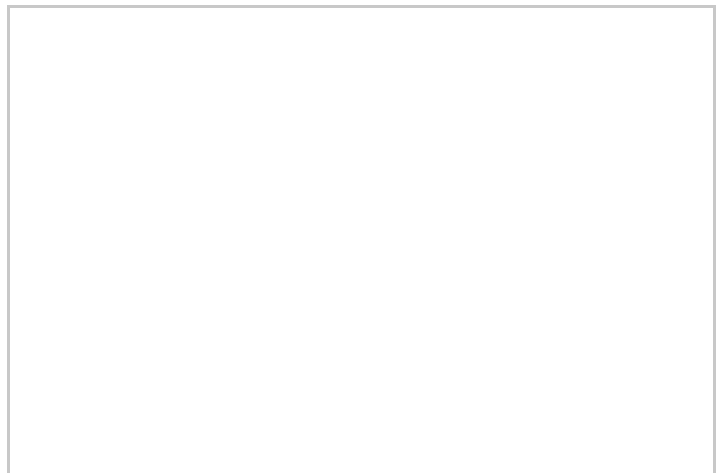
8'10" x 18'7" (2.685 x 5.668)

The kitchen is fitted with a range of base and wall units with contrasting work surfaces over and there is a brick effect tiled splash backs, plumbing for an automatic washing machine and space for a built in oven and hob, space for a fridge freezer, and a uPVC double glazed window and door to the rear aspect leading out to the rear garden.

Bathroom

6'8" x 5'10" (2.034 x 1.768)

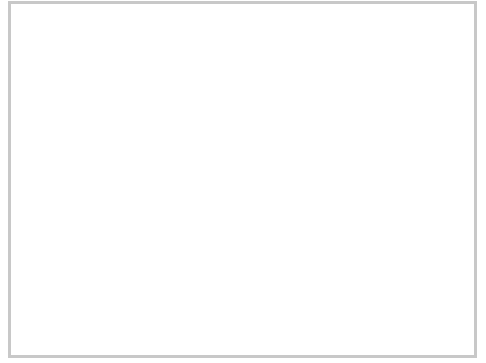
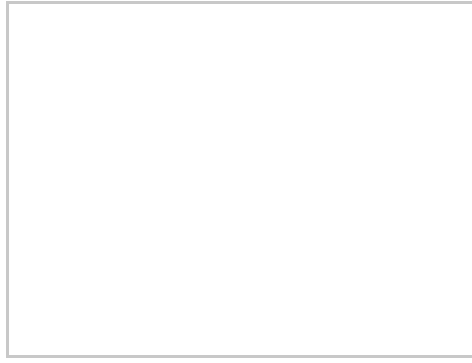
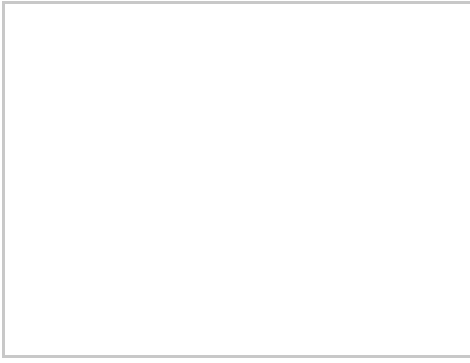
The bathroom is fitted with a panel bath, a low level wc and a pedestal wash hand basin, partial tiled walls and floor and a thermostatic shower.



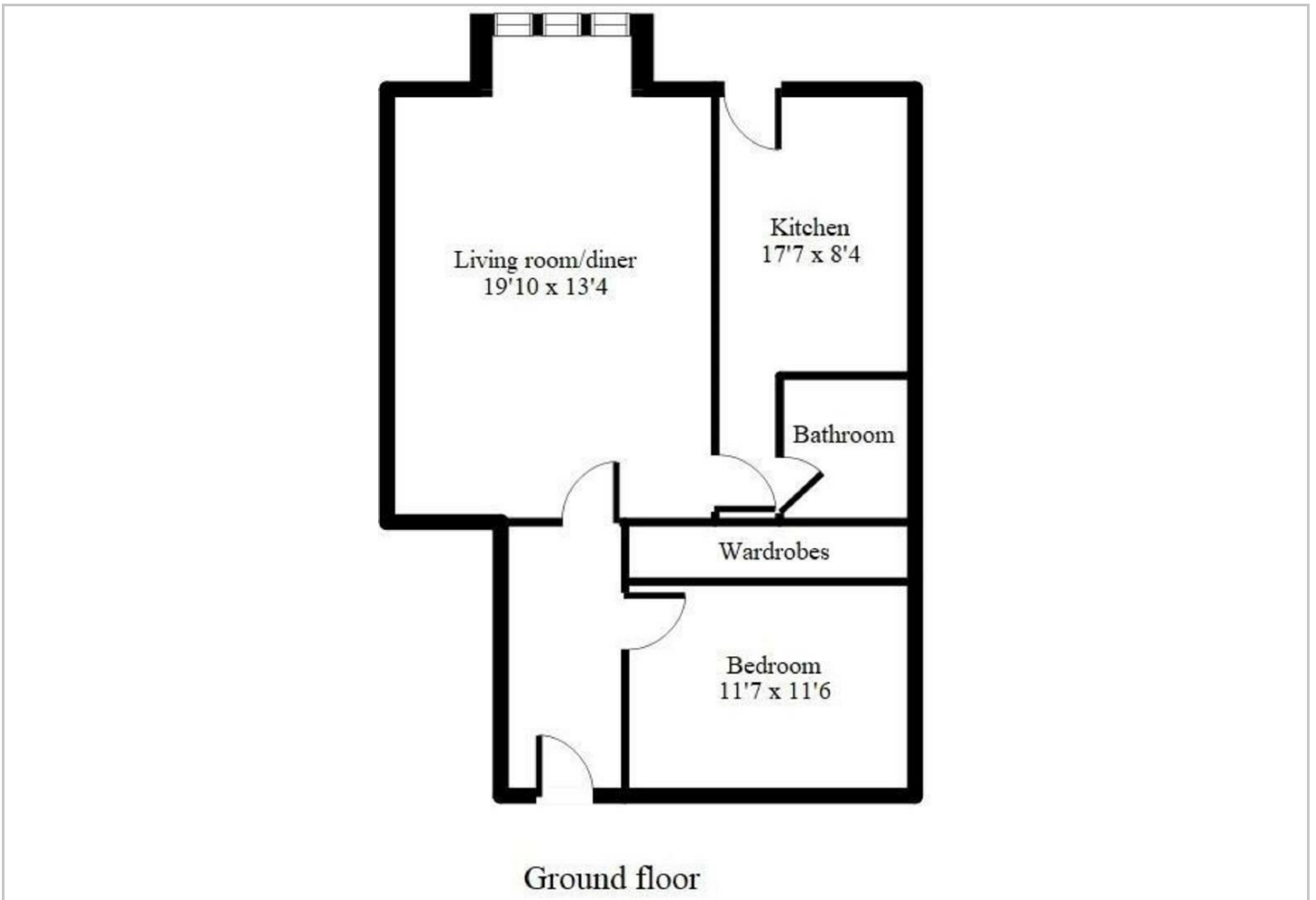
Road Map

Hybrid Map

Terrain Map



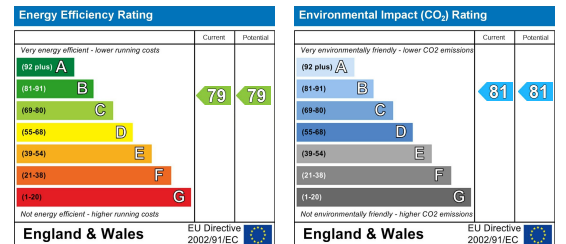
Floor Plan



Viewing

Please contact our Whitakers Estate Agents - East Hull Office Office on 01482 790970 if you wish to arrange a viewing appointment for this property or require further information.

Energy Efficiency Graph



These particulars, whilst believed to be accurate are set out as a general outline only for guidance and do not constitute any part of an offer or contract. Intending purchasers should not rely on them as statements of representation of fact, but must satisfy themselves by inspection or otherwise as to their accuracy. No person in this firms employment has the authority to make or give any representation or warranty in respect of the property.