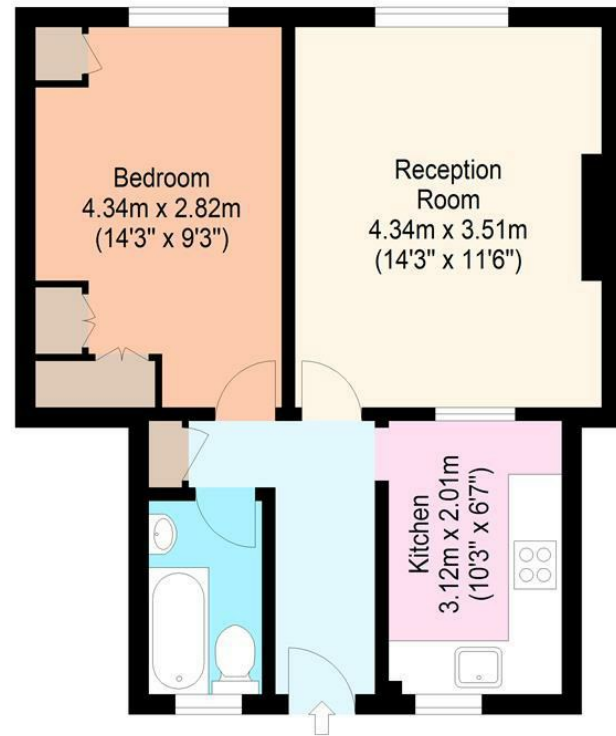


Ormond House
Third Floor
Approx. 43.6 sq. meters (469.3 sq. feet)



Total area: approx. 43.6 sq. meters (469.3 sq. feet)
For illustration purposes only - not to scale

www.lpaplus.com

Whilst every attempt has been made to ensure the accuracy of the floor plan contained here, measurements of doors, windows, rooms and any other items are approximate and no responsibility is taken for any error, omission or mis-statement. This plan is for illustrative purposes only and should be used as such by any prospective purchaser. The services, systems and appliances shown have not been tested and no guarantee as to their operability or efficiency can be given.



Lordship Road, N16



£1,200

Located just off Stoke Newington Church Street and a stones throw away from Clissold Park, this one bedroom flat is set on the second floor of this purpose built block. Internally the flat has been well maintained by its present owners . The flat comprises of one double bedroom, separate kitchen and living room, bathroom and is offered part furnished. Perfectly positioned and just a short stroll away to an array of shops, pubs and restaurants along Church Street, this property would suit both a single person aswell as a couple. Available Mid May



While we endeavor to make our sales details accurate and reliable, if there is any point which is of particular importance to you, please contact the office and we will be pleased to confirm the position for you. Particularly if contemplating traveling some distance to view the property. All room sizes have been measured with an electronic sonic tape, the accuracy of which cannot be guaranteed. You are advised to make your own checks before contemplating a purchase, especially if an exact measurement is of particular importance to you.

oakwoodestateagents.com

48 Stoke Newington Church Street
London N16 ONB

Company No. 2995463, Oakwood Estate Agents Limited T/A Oakwood

Tel 020 7249 1000
Fax 020 7249 2000

www.oakwoodestateagents.com

