



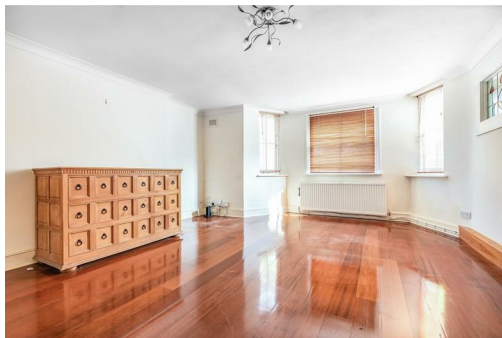
Matthew James

St James House | St James Road | Surbiton | Surrey KT6 4QH

T: +44 (0) 20 8390 2266

E: enquiries@matthewjamesestateagents.co.uk

www.matthewjamesestateagents.co.uk



## St. James Road, Surbiton, KT6 4QH

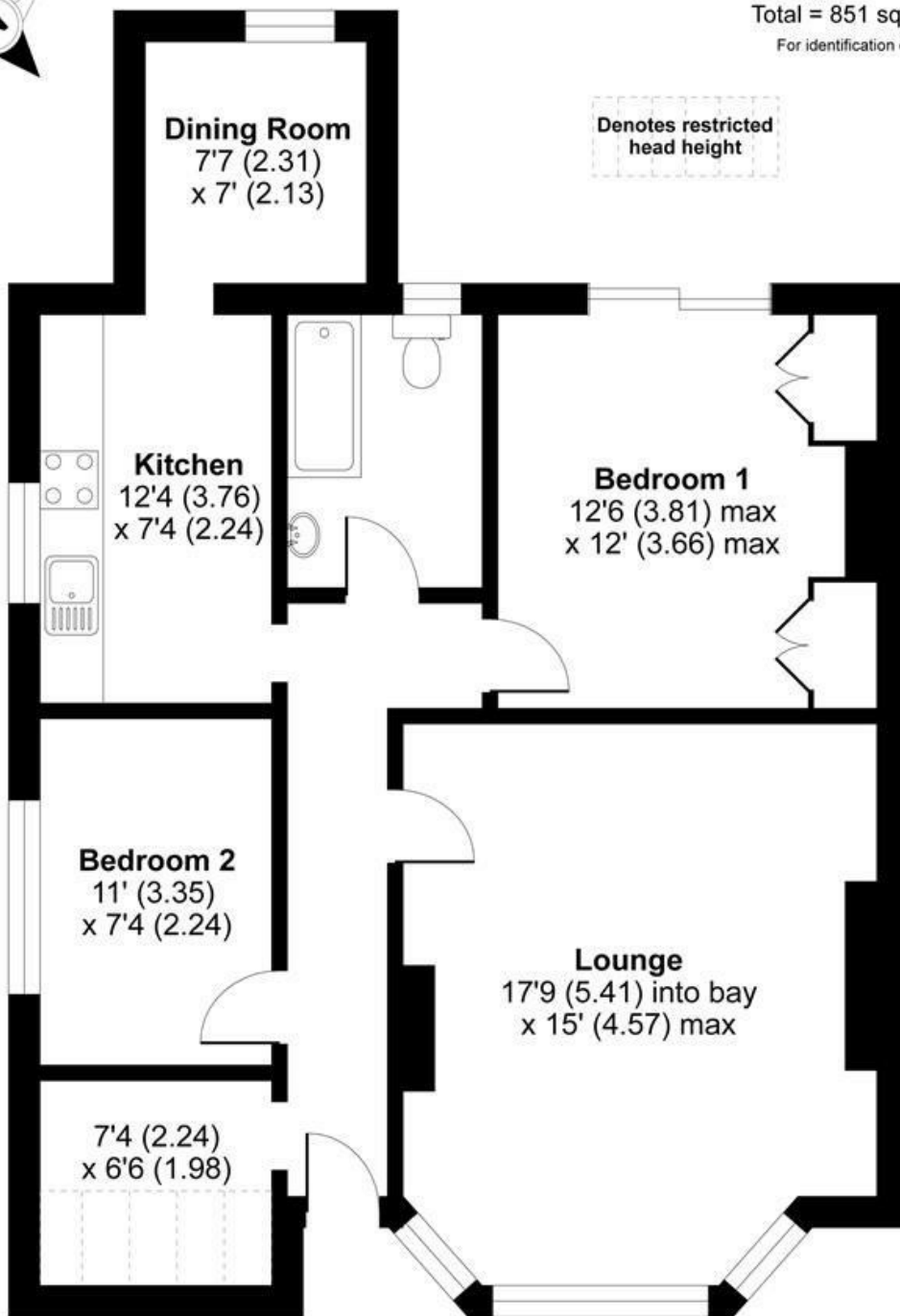
A spacious two bedroom garden floor conversion apartment with parking. Located within the heart of Surbiton only moments walk from the mainline station and high street. The many benefits include a living room with a walk in bay window and good size separate fitted kitchen with a dining area. A very large master bedroom with built in wardrobes & a second double bedroom. There is a modern fitted bathroom with a shower over the bath. A welcoming entrance hallway with a very large storage area. Gas central heating. Driveway parking to the side of the property. A communal garden to the rear. Sold with a Share of the Freehold and no onward chain.

**Guide Price £380,000 Leasehold - Share of Freehold**

**EPC Rating:**

St. James Road, Surbiton, KT6

Approximate Area = 829 sq ft / 77 sq m  
 Limited Use Area(s) = 22 sq ft / 2 sq m  
 Total = 851 sq ft / 79 sq m  
 For identification only - Not to scale



LOWER GROUND FLOOR



Floor plan produced in accordance with RICS Property Measurement Standards incorporating International Property Measurement Standards (IPMS2 Residential). © nrichcom 2021. Produced for Matthew James. REF: 716559

These sales particulars have been prepared as a general guide only. We have not carried out a detailed survey, tested the services, appliances or specific fittings. Your solicitor must confirm lease or freehold details. Carpets, curtains, gas fires, electrical goods/fittings or other fixtures, unless expressly mentioned, are not included in the sale of this property. If there are any important matter which are likely to affect your decision to buy, please contact this office and we will be pleased to check the information for you before viewing the property. Before this property can be removed from the market, all offer.; must be checked by our Financial Services Department. This is a service we offer on behalf of our clients. Please note that our room sizes are quoted in metres to the nearest tenth of a meter on a wall-to-wall basis. The imperial equivalent is only intended as an approximate guide for those not fully conversant with the metric measurements. All measurements have been taken using a sonic tape measure and therefore may be subject to a small margin of error.

| Energy Efficiency Rating                    |                         | Current | Potential |
|---|-------------------------|---------|-----------|
| Very energy efficient - lower running costs |                         |         |           |
| (92 plus) <b>A</b>                          |                         |         |           |
| (81-91) <b>B</b>                            |                         |         |           |
| (69-80) <b>C</b>                            |                         |         |           |
| (55-68) <b>D</b>                            |                         |         |           |
| (39-54) <b>E</b>                            |                         |         |           |
| (21-38) <b>F</b>                            |                         |         |           |
| (1-20) <b>G</b>                             |                         |         |           |
| Not energy efficient - higher running costs |                         |         |           |
| <b>England &amp; Wales</b>                  | EU Directive 2002/91/EC |         |           |

| Environmental Impact (CO <sub>2</sub> ) Rating                  |                         | Current | Potential |
|---|-------------------------|---------|-----------|
| Very environmentally friendly - lower CO <sub>2</sub> emissions |                         |         |           |
| (92 plus) <b>A</b>  |                         |         |           |
| (81-91) <b>B</b>  |                         |         |           |
| (69-80) <b>C</b>  |                         |         |           |
| (55-68) <b>D</b>  |                         |         |           |
| (39-54) <b>E</b>  |                         |         |           |
| (21-38) <b>F</b>  |                         |         |           |
| (1-20) <b>G</b>   |                         |         |           |
| Not environmentally friendly - higher CO <sub>2</sub> emissions |                         |         |           |
| <b>England &amp; Wales</b>                                      | EU Directive 2002/91/EC |         |           |