

241 Deansgate, Manchester, Lancashire, M3 4EL

Tel: 0161 637 8336

Email: contactus@ascendproperties.com

www.ascendproperties.com

Ascend

Built on higher standards



Carmel Court, 14 Holland Road, Manchester

£535 PCM

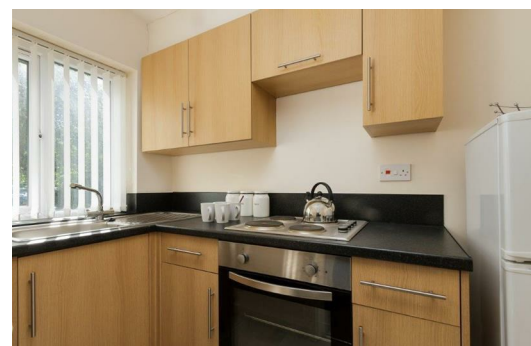
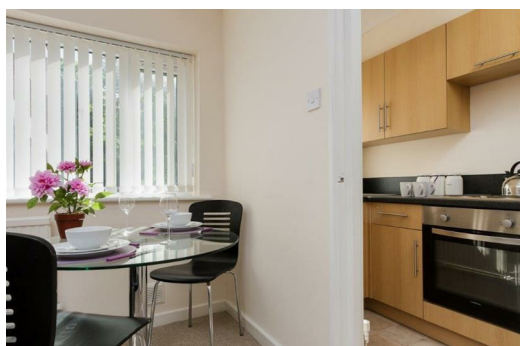
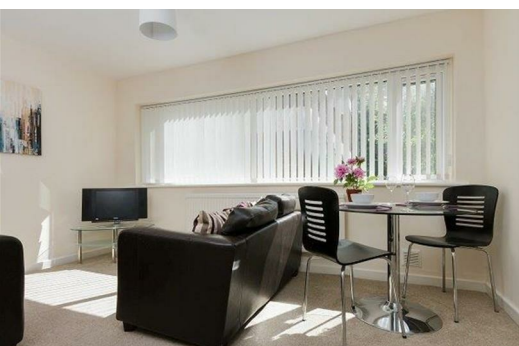
This cracking one-bedroom, ground floor apartment is situated in the leafy Blackley area of Manchester. Close to Cheetham Hill and offering great transport links to the city, you really are in a fantastic location with everything you could possibly need, right on the doorstep.

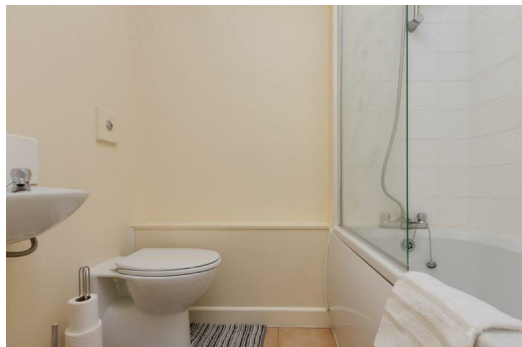
Take a step inside and you'll find a bright open-plan living room with a fully fitted kitchen, a decent sized double bedroom and a three-piece suite in the swish bathroom. There's plenty of space inside so you'll have more than enough room to really make yourself at home. Outside there's plenty of street parking too - people who struggle with parking on a regular basis will know how much of a bonus this is.

If you're interested in having a closer look or have any questions, do get in touch.

And just so you know, the pictures for this apartment are for marketing purposes only. The internal fixtures, fittings and furnishings may vary.

Available Now





Energy Efficiency Rating		Environmental Impact (CO ₂) Rating	
Current	Target	Current	Target
Energy A	Energy B	Enviro A	Enviro B
Energy B	Energy C	Enviro B	Enviro C
Energy C	Energy D	Enviro C	Enviro D
Energy D	Energy E	Enviro D	Enviro E
Energy E	Energy F	Enviro E	Enviro F
Energy F	Energy G	Enviro F	Enviro G
Energy G	Energy H	Enviro G	Enviro H
Energy H	Energy I	Enviro H	Enviro I
Energy I	Energy J	Enviro I	Enviro J

Energy Efficiency Rating: Current 75, Target 78
 Environmental Impact (CO₂) Rating: Current 79, Target 84