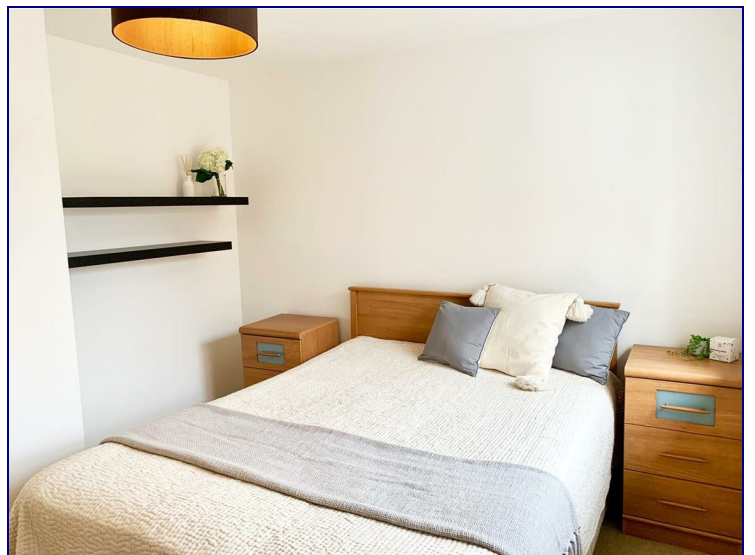
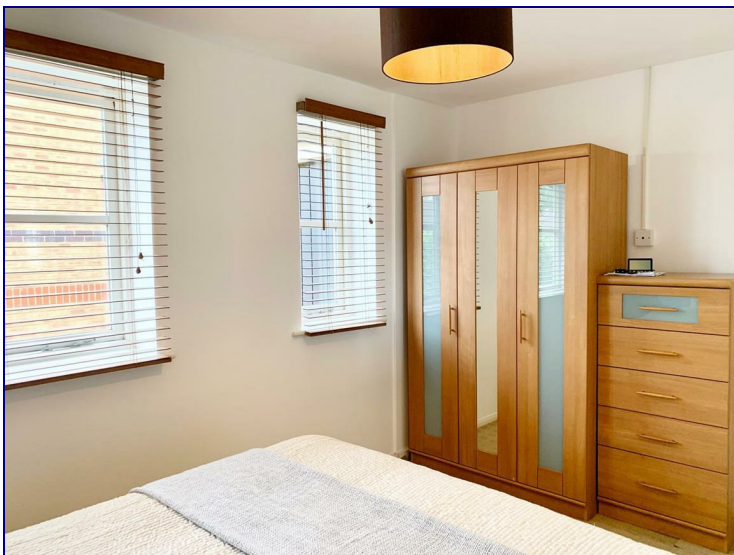


Hispano Mews, Enfield, EN3 6LU



£1,100

Rarely available ONE BEDROOM FLAT SITUATED in Enfield Island Village. This Well Presented Property is Situated within close proximity to Enfield Lock Station offering great access into TOTTENHAM HALE & LONDON LIVERPOOL STREET. Also benefiting from an onsite Gym, Tesco, Nursery and other Convenient shops. This Flat also offers Communal Grounds, Parking, One Double Bedroom And a Fitted Kitchen.

Offered Part Furnished

Available Now

COMMUNAL GROUNDS, GARDENS & PARKING

ENTRANCE HALLWAY

HALLWAY

RECEPTION ROOM

With Windows To Side, TV Point, Telephone Point, Power, Storage Heater.

KITCHEN

With Window To Side, Worksurfaces, Single Drainer, Plumbed, Lino Flooring.

BEDROOM ONE

With Window To Side, Power, Storage Heater, Carpet Flooring.

BATHROOM

With Extractor Fan, Panel Enclosed Bath, Low Level WC, Pedestal Washing Hand Basin, Lino Flooring.

EPC RATING C



TOP FLOOR
39.0 sq.m. (420 sq.ft.) approx.



TOTAL FLOOR AREA : 39.0 sq.m. (420 sq.ft.) approx.

Whilst every attempt has been made to ensure the accuracy of the floorplan contained here, measurements of doors, windows, rooms and any other items are approximate and no responsibility is taken for any error, omission or mis-statement. This plan is for illustrative purposes only and should be used as such by any prospective purchaser. The services, systems and appliances shown have not been tested and no guarantee as to their operability or efficiency can be given.
Made with Metropix ©2020

Energy Efficiency Rating		Current	Potential
Very energy efficient - lower running costs			
(92 plus) A			
(81-91) B			
(69-80) C			
(55-68) D			
(39-54) E			
(21-38) F			
(1-20) G			
Not energy efficient - higher running costs			
England & Wales	EU Directive 2002/91/EC	72	73

Environmental Impact (CO ₂) Rating		Current	Potential
Very environmentally friendly - lower CO ₂ emissions			
(92 plus) A			
(81-91) B			
(69-80) C			
(55-68) D			
(39-54) E			
(21-38) F			
(1-20) G			
Not environmentally friendly - higher CO ₂ emissions			
England & Wales	EU Directive 2002/91/EC	63	64

