

020 8653 3444



- Off street parking for two cars
- Gas central heating (N/T)
- Garden to rear
- 1st floor bathroom
- Needs some decorative work

Priory Gardens, South Norwood, London, SE25 5SG

SPACIOUS TWO DOUBLE BEDROOM HOUSE, located in a cul de sac within easy reach of both Norwood Junction Over Ground and Selhurst stations. Heavers farm and St Chads schools are close by. The property has good sized rooms, and would ideally suite first time buyers! Call to book your viewing.

Asking Price Of £375,000

Property Description

SPACIOUS TWO DOUBLE BEDROOM HOUSE, located in a cul de sac within easy reach of both Norwood Junction Over Ground and Selhurst stations. Heavers farm and St Chads schools are close by. The property has good sized rooms, throughout and would ideally suite first time buyers! Call to book your viewing.

HALLWAY External porch with cupboard. Staircase.

LOUNGE 11' 11" x 16' 9" (3.65m x 5.13m) Door plus windows overlooking garden. Deep storage cupboard.

KITCHEN 13' 7" x 5' 8" (4.15m x 1.75m) Range of fitted cupboards with worktops. Window overlooking front drive.

BEDROOM 1 11' 11" x 12' 3" (3.65m x 3.74m) Window facing rear, fitted wardrobes.

BEDROOM 2 11' 11" x 8' 6" (3.65m x 2.6m) Windows facing front.

BATHROOM Bath, hand basin, Wc

GARDEN To front, off street parking area for 2 cars

To Rear; patio plus lawn, sunny aspect.

LOCAL AMENITIES Heavers Farm plus St Chads schools are close by

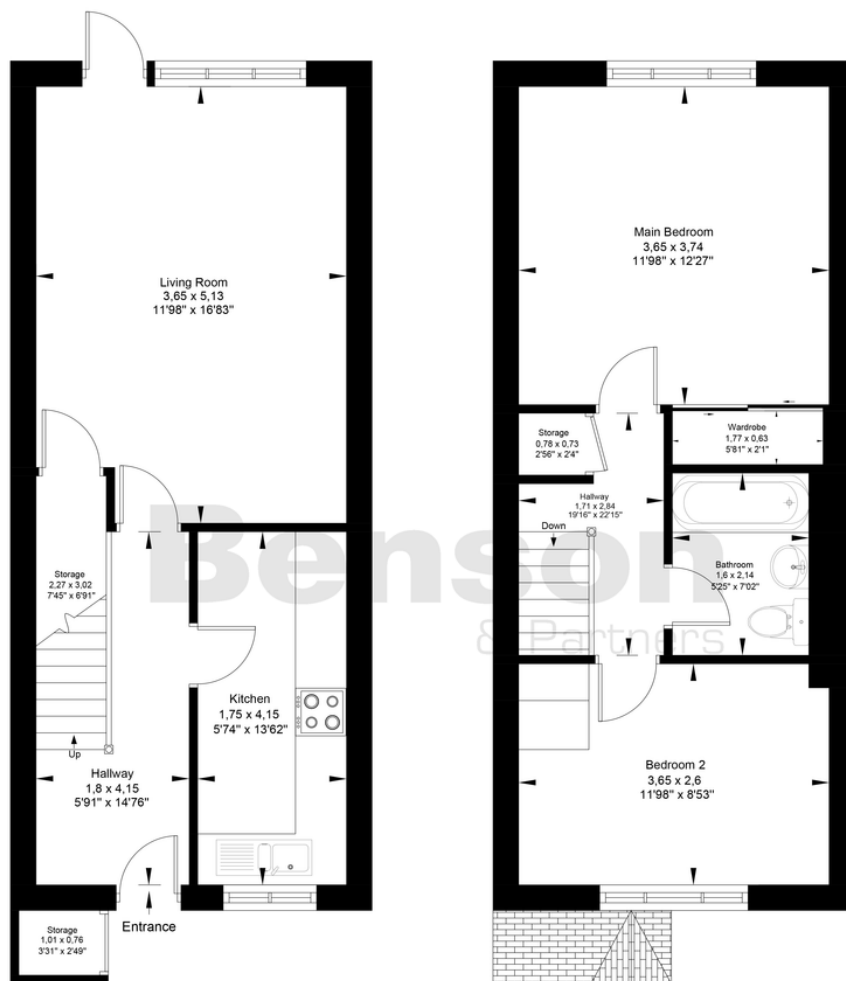
there are bus stops that take you to East Croydon or Crystal Palace round the corner.





There are many shops including a Sainsbury Store within easy walking distance

There is a park located close by.



Total Net Area
68,82m² (687 sq.ft.)
Total Gross Area

%epcGraph_c_1_334%

Benson & Partners Ltd
4 – 6 Station Road
London
SE25 5AJ

southnorwood@bensonpartners.co.uk
020 8653 3444

Agents Note: Whilst every care has been taken to prepare these sales particulars, they are for guidance purposes only. All measurements are approximate and are for general guidance purposes only and whilst every care has been taken to ensure their accuracy, they should not be relied upon and potential buyers are advised to recheck the measurements.