



LOVE YOUR HOME

SALES // LETTINGS // PROPERTY MANAGEMENT



41 4 Lambarde Square, Greenwich, London, SE10 9GB  
£1,500 Per month



41 4 Lambarde Square, Greenwich, London, SE10 9GB

**£1,500 Per month**

A great one bed penthouse apartment in Greenwich Square SE10.

With a spacious layout, private balcony and an abundance of amenities close by.

Greenwich Square includes a Sainsburys Local, Costa Coffee, Thai restaurant, dentist, yoga studio, Council run leisure center and library.

In excellent condition and with views across the local area.

Offered furnished and available 28th June.

## Description

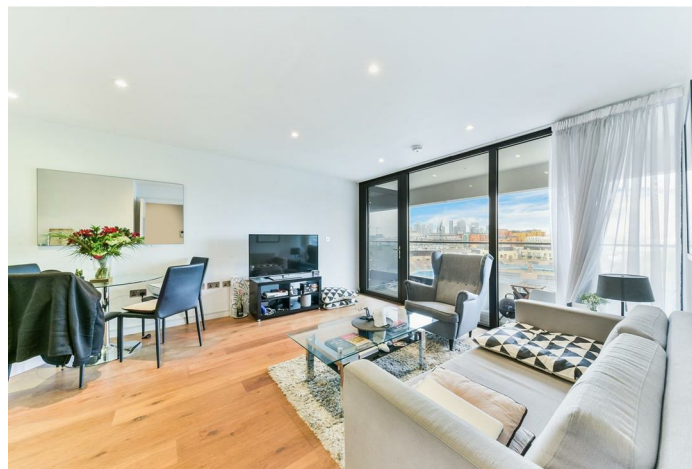
A great one bed penthouse apartment in Greenwich Square SE10.

With a spacious layout, private balcony and an abundance of amenities close by.

Offered furnished and available 28th June.

## Situation

The Apartment is presented in outstanding condition and fitted with all the basic facilities like: Balcony, Close to public transport, Double glazing, Fitted Kitchen, Fully Furnished, Shops and amenities nearby, Video Entry.

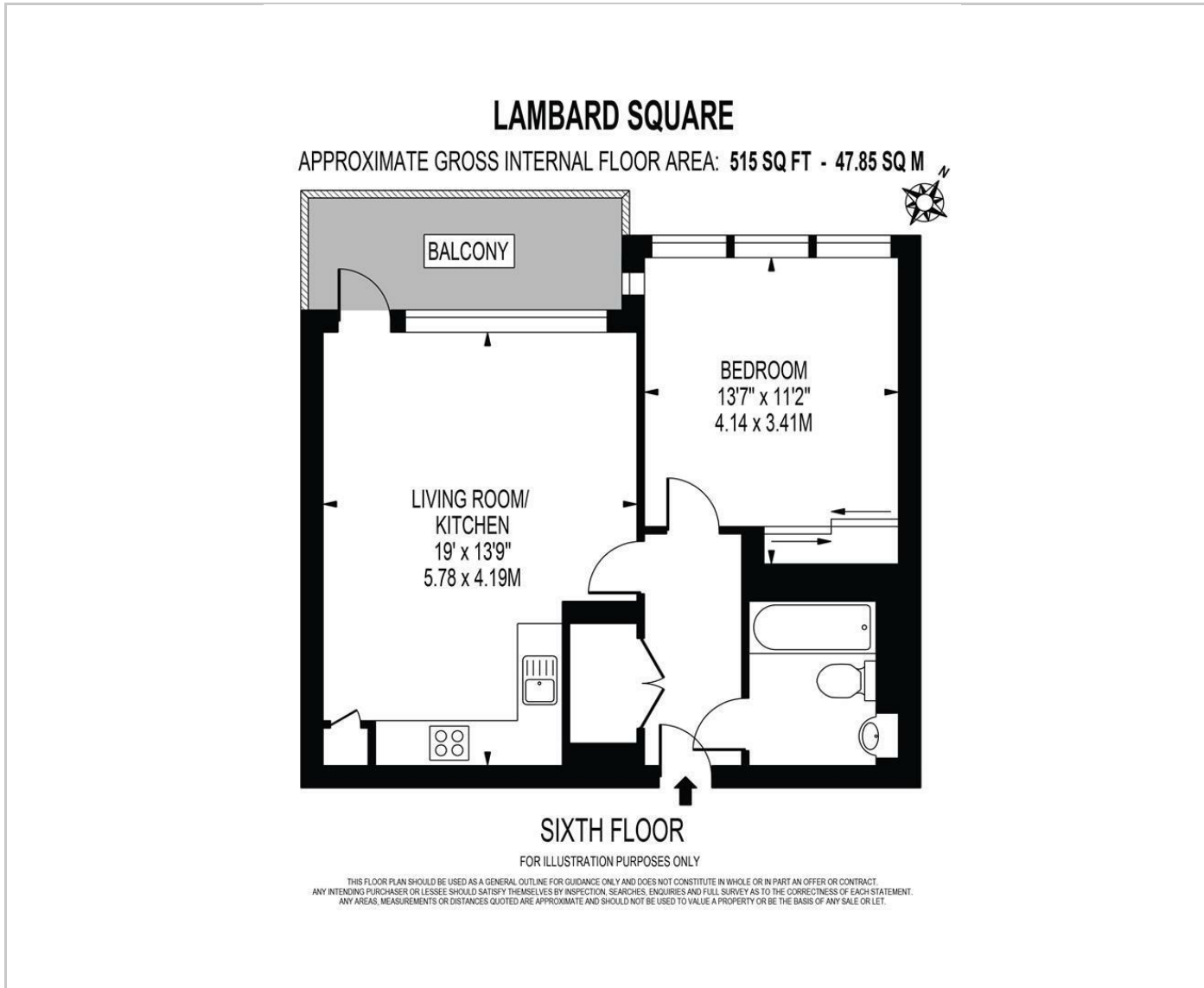


Furnished

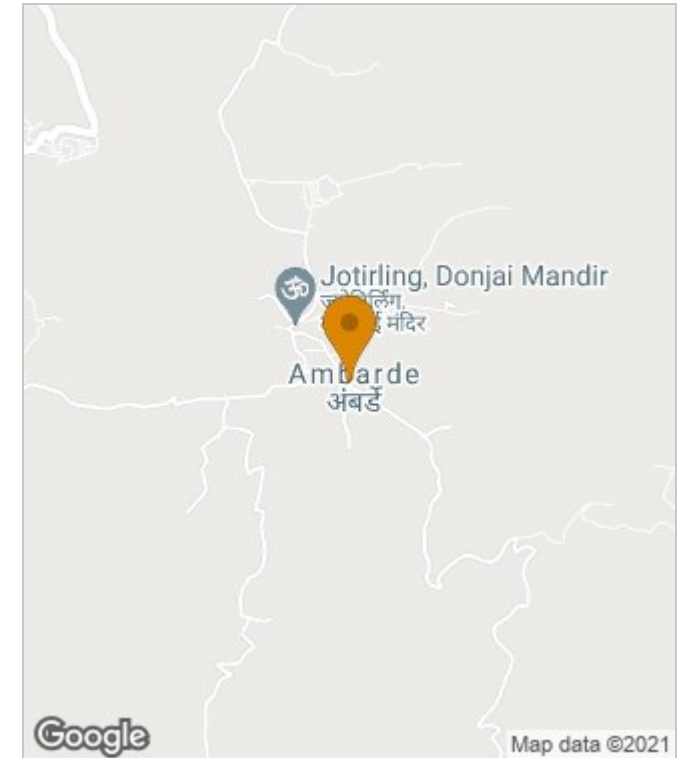
Council Tax Band: B

Available: 30th June 2021

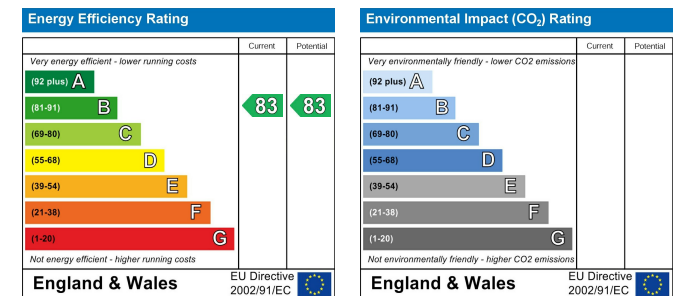
## Floor Plans



## Area Map



## Energy Performance Graph



These particulars, whilst believed to be accurate are set out as a general outline only for guidance and do not constitute any part of an offer or contract. Intending purchasers should not rely on them as statements of representation of fact, but must satisfy themselves by inspection or otherwise as to their accuracy. No person in this firm's employment has the authority to make or give any representation or warranty in respect of the property.