

FOR SALE



Clarendon Street , Dover

2 Bedrooms, 1 Bathroom, Terraced house

Asking Price Of £130,000



Clarendon Street , Dover
2 Bedrooms, 1 Bathroom
Asking Price Of £130,000

BOOK A LIVE VIRTUAL VIEWING FOR THIS PROPERTY - LIVE Online Viewings from anywhere and any device! Great investment opportunity a TWO BEDROOMED Victorian style family home in need of refurbishment but with scope to improve to your own taste. On the ground floor there are two reception rooms and a bright kitchen with a door leading to your own private garden. The first floor has two large bedrooms one of which has a great sized en-suite bathroom. Houses at this price don't stay on the market for long so view now

- Two bedrooms
- Electric heating
- Needs refurbishment
- No chain
- Double glazed

- DOUBLE GLAZED FRONT DOOR
- RECEPTION ROOM
- RECEPTION ROOM
- KITCHEN
- HALLWAY
- LANDING
- BEDROOM
- BEDROOM
- ENSUITE BATHROOM
- GARDEN



Whilst we endeavour to make our sales details accurate and reliable, if there is any point which is of particular importance to you, please contact the office and we will be pleased to check the information. Do so, particularly if contemplating travelling some distance to view the property.



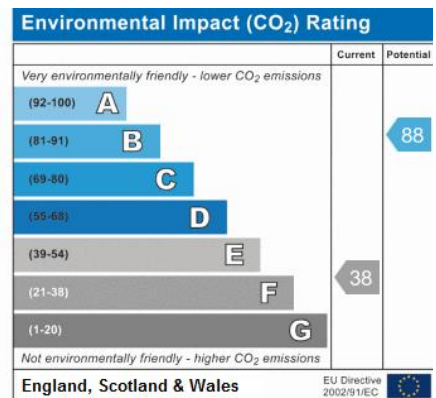
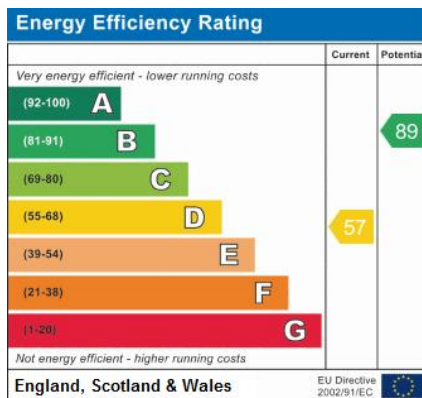
All measurements have been taken using a sonic / laser tape measure and therefore, may be subject to a small margin of error. All Measurements are Approximate. The mention of any appliances and/or services within these Sales Particulars does not imply they are in full and efficient working order.

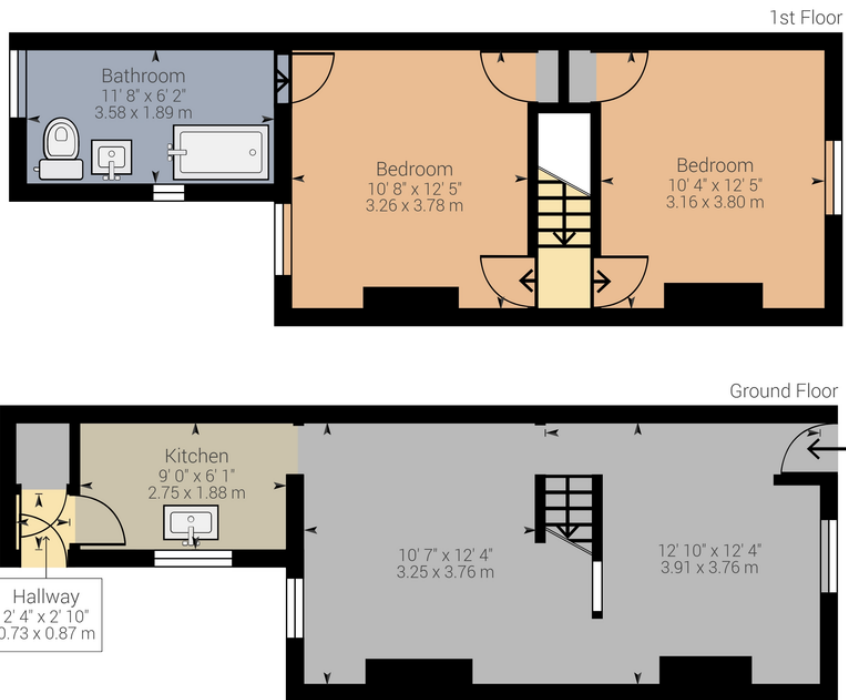
We have made a virtual tour for this gorgeous home: check out the stunning 270-megapixel resolution tour by clicking the link on this page!

Our team of highly qualified Financial Consultants can provide you with up to the minute information on many of the rates available. To arrange an appointment, telephone this office. **YOUR HOME IS AT RISK IF YOU DO NOT KEEP UP REPAYMENTS ON A MORTGAGE OR OTHER LOANS SECURED ON IT.** Full written quotation available on request. A suitable life policy may be required. Loans subject to status. Minimum age 18

Intended Buyers will be asked to produce photographic ID as well as a recent proof of address and we would ask for your cooperation in order that there will be no delay in agreeing the sale (subject to contract)







Approximate net internal area: 702.12 ft² / 65.23 m²
 While every attempt has been made to ensure accuracy, all measurements are approximate, not to scale. This floor plan is for illustrative purpose only and should be used as such by any prospective tenant or purchaser.

Powered by Giraffe360

Martin & Co Dover

130 Sandgate Road • • Folkestone • CT20 2BW
 T: 01304 213312 • E: dover@martinco.com

01304 213312
<http://www.martinco.com>



Accuracy: References to the Tenure of a Property are based on information supplied by the Seller. The Agent has not had sight of the title documents. A Buyer is advised to obtain verification from their Solicitor. Items shown in photographs including but not limited to carpets, fixtures and fittings are not included unless specifically mentioned within the sales particulars. They may however be available by separate negotiation. Buyers must check the availability of any property and make an appointment to view before embarking on any journey to see a property. No person in the employment of the agent has any authority to make any representation about the property, and accordingly any information given is entirely without responsibility on the part of the agents, sellers(s) or lessors(s). Any property particulars are not an offer or contract, nor for part of one. **Sonic / laser Tape:** Measurements taken using a sonic / laser tape measure may be subject to a small margin of error. **All Measurements:** All Measurements are Approximate. **Services Not tested:** The Agent has not tested any apparatus, equipment, fixtures and fittings or services and so cannot verify that they are in working order or fit for the purpose. A Buyer is advised to obtain verification from their Solicitor or Surveyor.

