

Church Road  
Cheltenham GL51 9RG



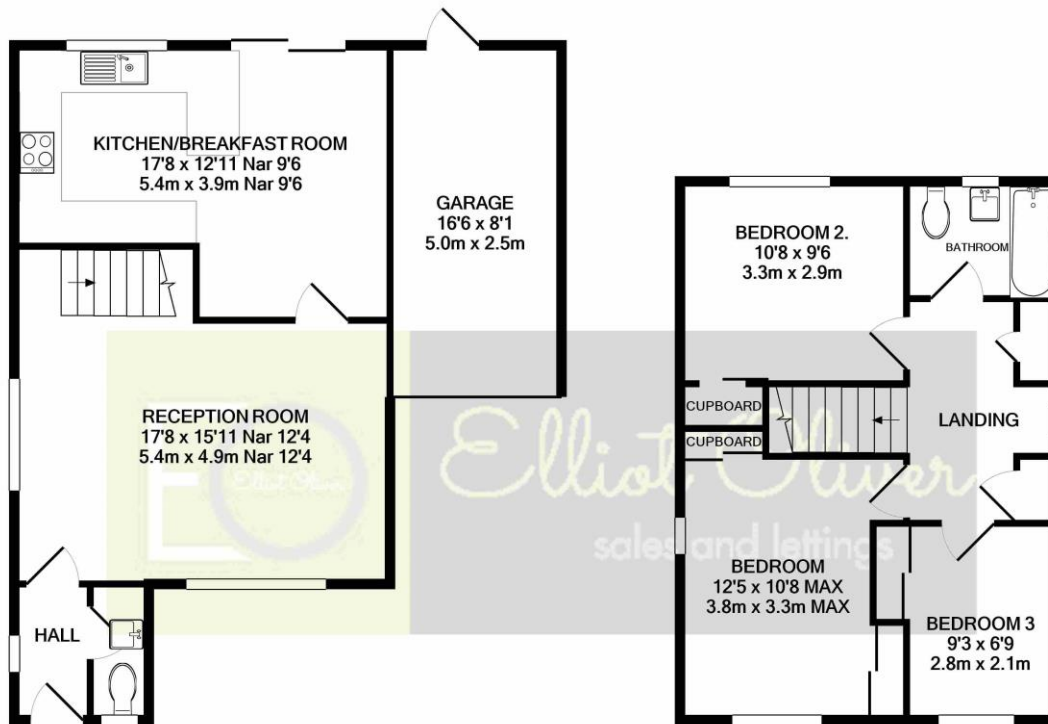
## 62 Church Road, Cheltenham, GL51 9RG

Type here...

Three Bedroom • Detached • Built By Robert Hitchins • Stunning Potential • Walking Distance To Swindon Village Primary School • Kitchen/Diner To The Rear • Gas Central Heating • Garage • Under 1/4 Of A Mile From The Retail Parks • Stunning Walks Nearby







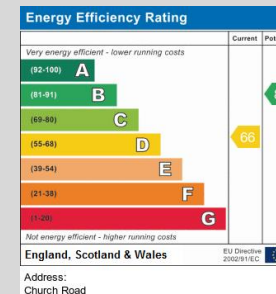
GROUND FLOOR  
APPROX. FLOOR  
AREA 622 SQ.FT.  
(57.8 SQ.M.)

1ST FLOOR  
APPROX. FLOOR  
AREA 448 SQ.FT.  
(41.6 SQ.M.)

TOTAL APPROX. FLOOR AREA 1070 SQ.FT. (99.4 SQ.M.)

Whilst every attempt has been made to ensure the accuracy of the floor plan contained here, measurements of doors, windows, rooms and any other items are approximate and no responsibility is taken for any error, omission, or mis-statement. This plan is for illustrative purposes only and should be used as such by any prospective purchaser. The services, systems and appliances shown have not been tested and no guarantee as to their operability or efficiency can be given

Made with Metropix ©2021



## OFFICE

101 Promenade,  
Cheltenham,  
Gloucestershire, GL50  
1NW  
info@elliotoliver.co.uk