

RUTLAND GATE

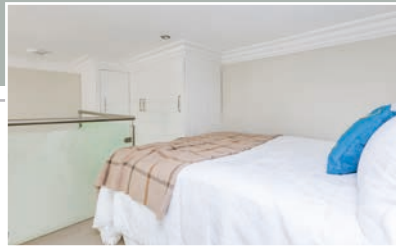
KNIGHTSBRIDGE SW7



SITUATED IN A FINE WHITE STUCCO BUILDING A MOST ATTRACTIVE GROUND FLOOR STUDIO FLAT WITH WONDERFUL WESTERLY VIEWS ON RUTLAND GATE'S GARDENS.

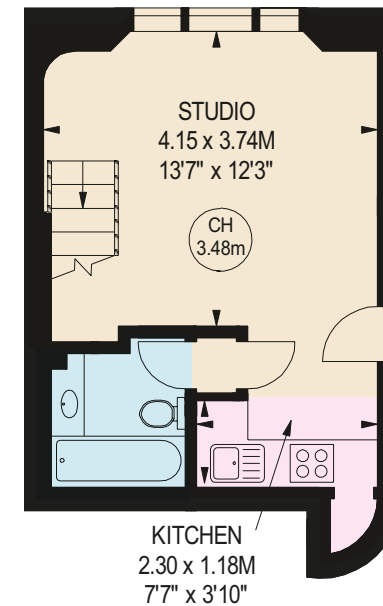
This elegant apartment has high ceilings and a separate mezzanine sleeping area and would make a fantastic pied-à-terre or long term rental investment.

Rutland Gate is a prime Knightsbridge garden square adjacent to Hyde Park and within a short walk to Harrods and all the amenities that this prestigious area has to offer.

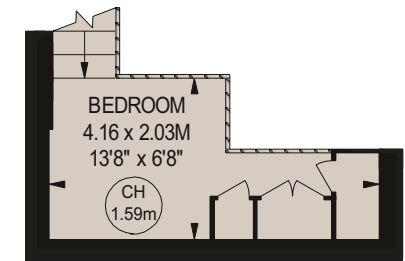
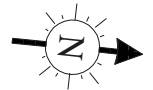


APPROXIMATE GROSS INTERNAL AREA

31.59 sq m / 340 sq ft



Key :
CH - Ceiling Height



MEZZANINE

GROUND FLOOR

The floor plan is not to scale and measurements and areas shown are approximate and therefore should be used for illustrative purposes only.

ACCOMMODATION

- Open Plan Reception Room
- Galleried Bedroom/Kitchen ■ Bathroom

TERMS

Price: £595,000

Share of Freehold with 997 years underlying

NICOLAS VAN PATRICK
INCORPORATING
HOBART SLATER

6-8 MONTEPELIER STREET,
LONDON SW7 1EZ
SALES | +44 (0)20 7581 8277
LETTINGS | +44 (0)20 7590 1200
info@nicolasvanpatrick.com
www.nicolasvanpatrick.com

These details have been prepared for general guidance only and should not be relied upon by prospective purchaser / tenants who before proceeding must check and otherwise satisfy themselves as to the property and the nature, state and availability of any facility or service.

