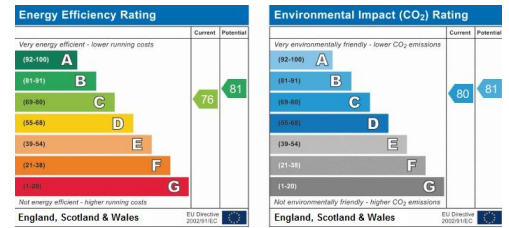
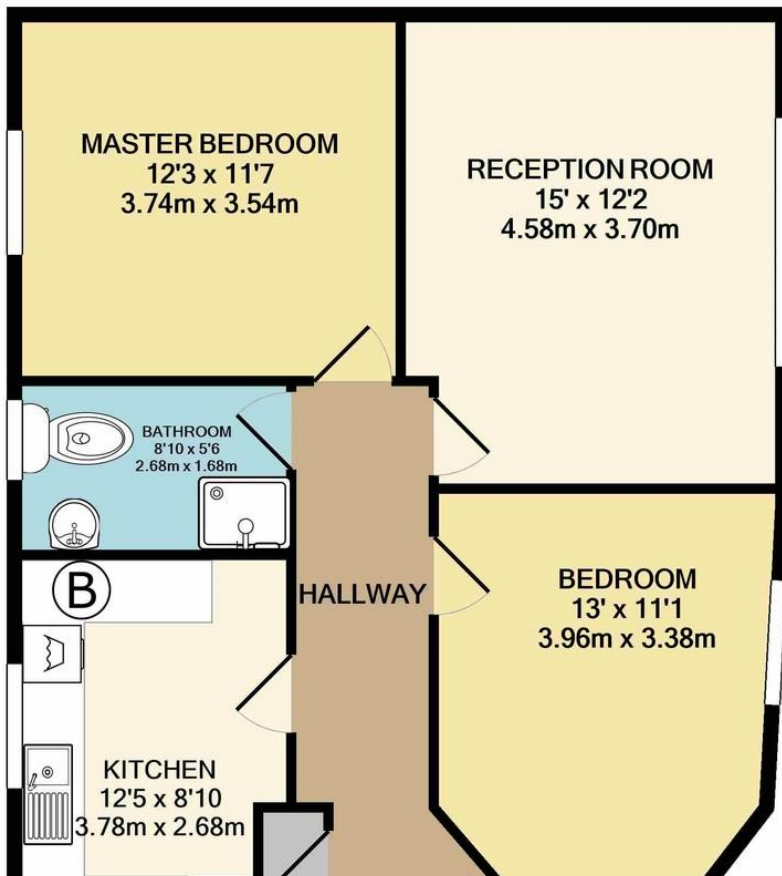




Raglan Court
Empire Way, Wembley, , HA9 0RG

£1,495 pcm

Property Summary



- First Floor Flat
- Two Double bedrooms
- Large reception
- Fully fitted kitchen
- Modern bathroom
- Recently refurbished
- Communal Garden
- Road Parking
- Excellent Transport Links & Local Amenities
- Opposite Wembley stadium

38 Court Parade
Wembley
Middlesex
HA0 3HS

www.propertyhubltd.com
info@propertyhubltd.com
0208 903 1002

Agents Note: Whilst every care has been taken to prepare these particulars, they are for guidance purposes only. All measurements are approximate are for general guidance purposes only and whilst every care has been taken to ensure their accuracy, they should not be relied upon and potential buyers/tenants are advised to recheck the measurements