



# Residential Park Home

## Cheltenham, Gloucestershire, GL51

### Omar Regency (32x20)



0800 954 1288

[sales@sellmygroup.co.uk](mailto:sales@sellmygroup.co.uk)



# £162,500

*Cheltenham, Gloucestershire, GL51 6TB*

The Omar Newmarket bungalow park home has an 'L' shape lounge and dining area that merges with the open plan kitchen with a large breakfast bar. The living room is furnished with two sofas, a coffee table and a corner TV unit in a light oak.

The spacious fitted kitchen with integrated appliances provides a wonderful contemporary and bright environment for cooking. Two double bedrooms, the master with en-suite shower and dressing area and family bathroom complete the arrangement. The master bedroom with its soft, natural colour palette has two double wardrobes and freestanding bedside cabinets, providing plenty of storage space and the en-suite shower room, which is situated beyond the dressing area, is modern and sleek.

This park offers a friendly and welcoming community lifestyle for the over 45's looking to downsize and free up money for retirement. All of the luxury park homes are set on landscaped plots, with off-road parking, easy to maintain garden space and like-minded neighbours. This park is also pet friendly, with residents allowed one cat or one dog.

- Brand new home
- Coming soon
- Countryside Views
- Fully Furnished
- Over 45's
- Part Exchange Available
- Pet-friendly
- Retirement Property
- Shops and amenities nearby

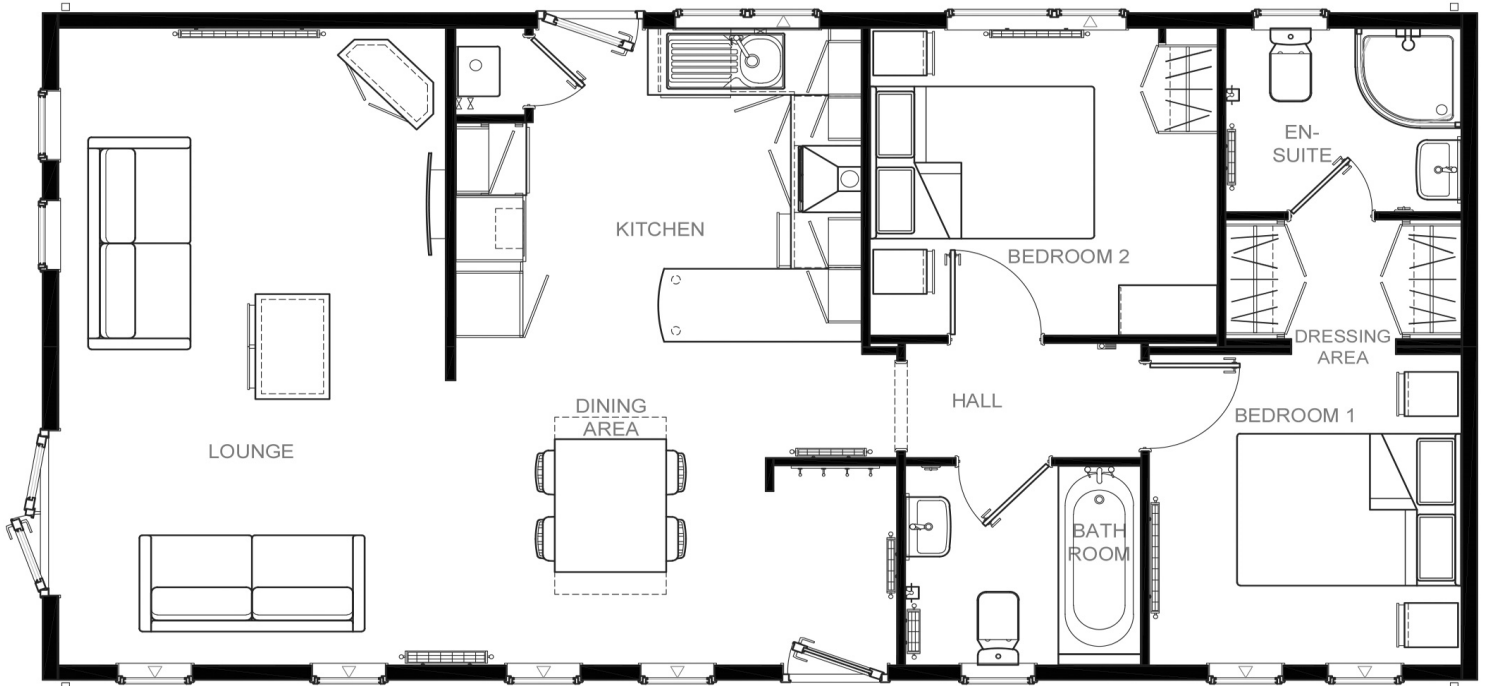
2 x  1 x 

## Part Exchange with Quickmove Properties

Our customers benefit from speed, convenience, and certainty. Secure your dream park home without worrying about estate agents, viewings, negotiations, or the risk of a sale falling through.



# Floor Plan



Newmarket 40'x20' 2DB

## CONTACT DETAILS

0800 954 1288

[sales@sellmygroup.co.uk](mailto:sales@sellmygroup.co.uk)

