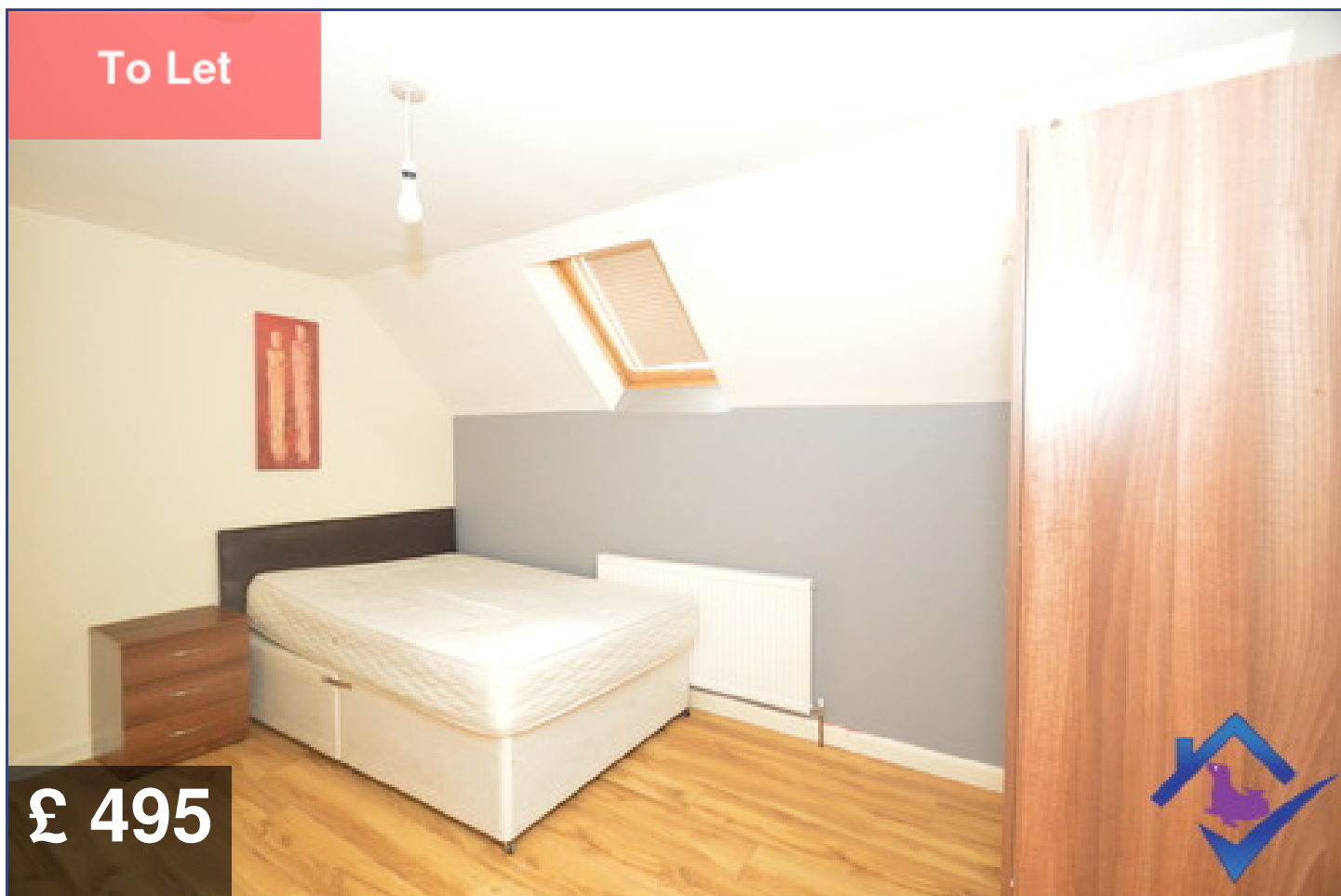




**SEALPROPERTIES**  
RENTAL MARKET SPECIALISTS

**Room 2**  
**Chelsea Grove**  
**Newcastle Upon Tyne**  
**NE4 5NN**



**Fully Furnished En Suite Room**

Beds : 1

Bath : 0

Parking : On Street



0191 580 5900



[WWW.SEALPROPERTIES.CO.UK](http://WWW.SEALPROPERTIES.CO.UK)



[INFO@SEALPROPERTIES.CO.UK](mailto:INFO@SEALPROPERTIES.CO.UK)

## Contact Us

### Agent Information

**Emma**

**0191 5805900**

**emma@sealproperties.co.uk**

**167/169 Saltwell Road**

**Gateshead, NE8 4TJ**

**sealproperties.co.uk**



### Scan Me

**Scan Me For Property Details**



### Quote Me

**Quote This Reference Number For  
More Information**

**SP21040692**

## Disclaimer

**Whilst every effort is made to ensure the contents of this brochure are accurate and true, the particulars are set out as a general outline for guidance purposes only and do not constitute any part of an offer or contract. Interested Parties should not rely on them as statements of representation of fact, but instead must satisfy themselves by inspection or otherwise as to their accuracy.**

**A Holding Fee equivalent to one week's rent is payable. Please contact the office for more details.**

**Energy Performance Certificate (EPC) information is available upon request. Please contact the office.**

# Gallery



## Description

SEAL Properties welcome to the rental market this fully furnished bedroom with en suite within the West end of Newcastle. There are shared communal areas including a living room and kitchen. Rent is for one double room with en suite and includes all bills. It is shared accommodation consisting of 7 rooms, 5 rooms with an en-suite, and sharing communal facilities including living room, kitchen, bathroom and utility cupboard. Rent is inclusive of bills including water, gas, electric, council tax and internet. Northumbria University, Newcastle University Business school, Central Station, St James Park and the city centre.

## Specification

### *Bedroom*

*The bedroom is fully furnished and includes a double bed, wardrobe and a bed side draw. The decor is neutral and laminate flooring.*

### *En suite*

*The en suite has a shower cubicle with an electric shower. Low flush W.C and a hand wash basin.*

### *Bills*

*All the bills are included within the rent - Gas, electric, water, council tax and internet - on a fair use basis.*