



31 GREENDALE COURT, BEDALE, DL8 1FB.



A lovely ONE BEDROOM apartment positioned on the FIRST FLOOR of this exclusive development for the over 60's. The property is CLOSE TO THE LIFT and stairs from the communal entrance and the accommodation comprises of a hallway with a store cupboard, Sitting room, kitchen a SHOWER ROOM plus the DOUBLE BEDROOM.

£90,000



Description

Located across the hall from the lift and stair access from the communal entrance this excellent apartment opens into a hallway which has a useful store cupboard and doors to all rooms. The sitting room offers a spacious bright space which can accommodate dining and sitting room furniture and has a pleasant outlook to the South over the communal gardens via the Juliet Balcony. Off the sitting room is the kitchen which has a range of wall and base units, integral appliances including an electric oven and hob, fridge and freezer. There is also a stainless sink under a double glazed window looking out over the communal gardens.

The double bedroom has a fitted wardrobe with mirror fronted folding doors and has a range of hanging space and shelves. The shower room has a large step in shower with glazed screen and double opening doors, a low level WC and a washbasin set into a vanity unit. There is also an extractor fan, electric towel rail and mainly tiled walls.

The property is served by double glazed windows and modern electric panel radiators and has a range of communal facilities including:

- Residents Lounge with kitchen facilities.
- Guest Bedroom with Ensuite Shower Room
- Laundry Room
- Refuse Room

There are attractive well stocked landscaped gardens surrounding the property for the use of the residents. There is on-site residents parking.

Greendale Court provides secure independent living for the over 60's. There are call points in every main room for direct contact with the House Manager and there is emergency 24 hour Careline cover.

General Information

Viewing - by appointment with Norman F. Brown.

Tenure - We understand that the property is Leasehold, although we have not verified this by sight of the Title Deeds.

Local Authority - Hambleton District Council
Tel: (01609) 779977

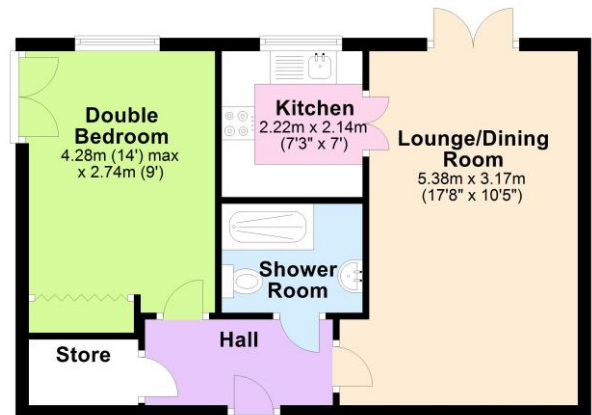
Council Tax Band – B

Service Charge – £2505.94
Ground Rent - £395pa

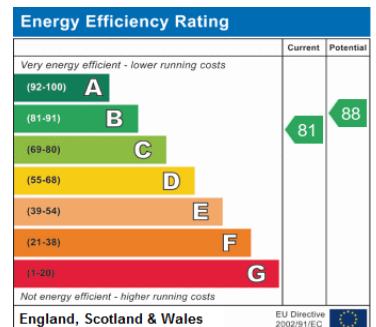
Location

Bedale is a market town and civil parish in the district of Hambleton, North Yorkshire. Listed in the Domesday Book as part of Catterick wapentake, markets have been held in the town since 1251 and the regular Tuesday market still takes place today.

Floor Plan



Norman F. Brown Chartered Surveyors & Estate Agents wish to advise prospective purchasers that we have not checked the services or appliances. The sales particulars have been prepared as a guide only; any floor-plan or map is for illustrative purposes only. Norman F. Brown Chartered Surveyors & Estate Agents, for themselves and for the vendors or lessors of this property whose agents they are give notice that: the particulars have been produced in good faith; do not constitute any part of a contract; no person in the employment of Norman F. Brown Chartered Surveyors & Estate Agents has any authority to make or give any representation of warranty in relation to this property.



6 Bridge Street, Bedale, North Yorkshire DL8 2AD **Tel: 01677 422282**
Email: bedale@normanfbrown.co.uk **www.normanfbrown.co.uk**

