



150 Vaughn Way, London, Wapping, E1W

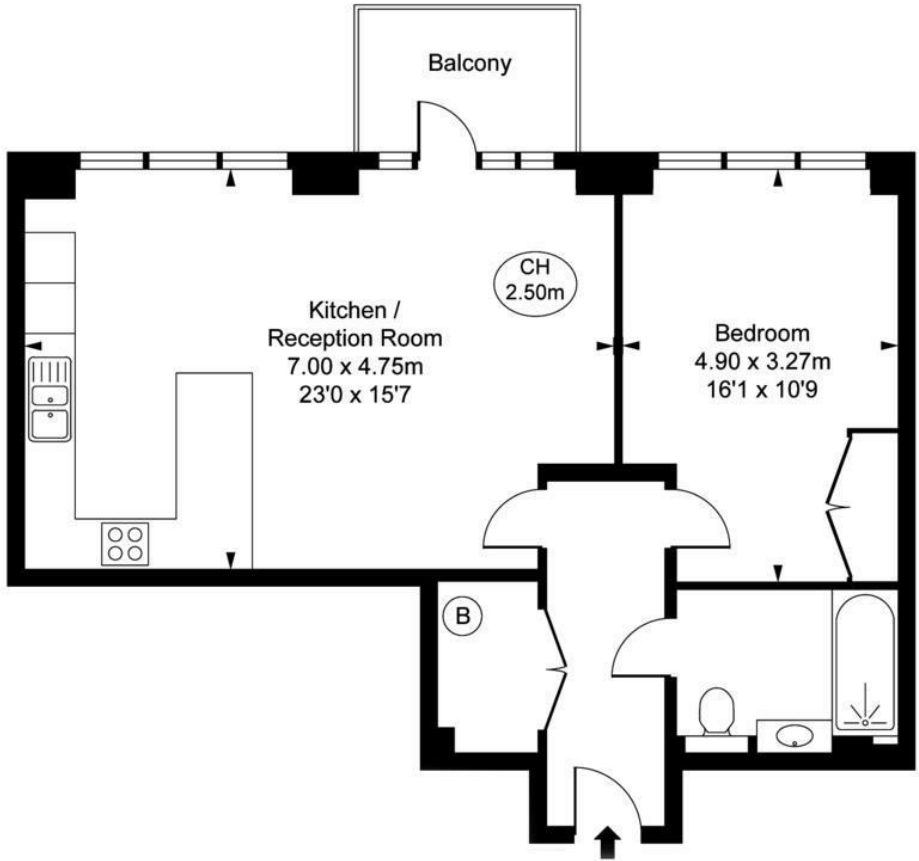
£575 Per Week* Fees Apply

VIDEO VIEWING: State of the art one bedroom apartment in the acclaimed London Dock Development. This 6th floor apartment (with lift access) is situated in newly developed Admiralty House. Comprises a sizeable and beautifully bright open plan reception room with a fully fitted marble topped kitchen, a bright double bedroom with built in storage and a tiled bathroom with heated flooring and towel rail. The apartment also benefits from a private balcony large enough for a table and chairs and air conditioning in both the bedroom and reception room.

Offered Furnished, Students and Professionals welcome.

London Dock is a prestigious new development by St George which benefits from 24 hour concierge, communal gardens, gym/swimming pool, virtual golf room and squash room onsite. It is located a short walk to St Katherine's Docks and all its amenities, and also very close to the Landmark attractions around Tower Bridge. The City is also within walking distance, and Tower Hill underground station (Circle and District Lines) and Tower Gateway DLR, provide excellent transport links.

- Brand New Development
- Approx 662 Sq. Ft.
- Large Bright Reception Room
- Beautiful Luxury Kitchen
- Sixth Floor With Lift
- Air Conditioned
- Luxury Spa And Gym Facilities
- 24 Hour Concierge



Admiralty House, E1W
 Approximate Gross Internal Area
 61.52 sq m / 662 sq ft
 (CH = Ceiling Heights)



| Energy Efficiency Rating | | Current | Potential |
|---|--|-------------------------|-----------|
| Very energy efficient - lower running costs | | | |
| (92 plus) A | | | |
| (81-91) B | | 86 | 86 |
| (69-80) C | | | |
| (55-68) D | | | |
| (39-54) E | | | |
| (21-38) F | | | |
| (1-20) G | | | |
| Not energy efficient - higher running costs | | | |
| England & Wales | | EU Directive 2002/91/EC | |

| Environmental Impact (CO ₂) Rating | | Current | Potential |
|---|--|-------------------------|-----------|
| Very environmentally friendly - lower CO ₂ emissions | | | |
| (92 plus) A | | | |
| (81-91) B | | | |
| (69-80) C | | | |
| (55-68) D | | | |
| (39-54) E | | | |
| (21-38) F | | | |
| (1-20) G | | | |
| Not environmentally friendly - higher CO ₂ emissions | | | |
| England & Wales | | EU Directive 2002/91/EC | |

Admin fee: £ inclusive of VAT | Reference Fee: £ inclusive of VAT per application | Inventory Fee may also apply