



**Bromsgrove
Road**

REDDITCH

£249,950



Three Bedroom Mid Terraced Property

Features.

- THREE DOUBLE BEDROOMS
- EN-SUITE TO MASTER BEDROOM
- SET ACROSS THREE FLOORS
- MODERN FITTED KITCHEN
- MODERN GROUND FLOOR BATHROOM
- LOUNGE
- DINING ROOM
- BASEMENT
- OFF ROAD PARKING
- CLOSE PROXIMITY TO TOWN CENTRE AND TRAIN STATION

Description.

Summary: An immaculately presented, artistically designed three bedroom mid terraced property set across three floors. The property benefits from some original characteristic features such as feature fireplaces, high ceilings, exposed beams and a basement. Situated close to the town centre in Redditch.

Description: This property has been wonderfully presented throughout and is certainly a must view to appreciate its features. The accommodation in brief comprises:- A bright and spacious lounge with a feature fireplace and wooden flooring. A separate dining room with opening patio doors to the rear garden, feature fireplace and through access to the kitchen. The kitchen has a range of fitted units and some integrated appliances. Completing the ground floor is a modern urban designed bathroom benefiting from a bath with shower over, sink and WC. A rising staircase leads to the first floor and offers two spacious double bedrooms and a further staircase to the second floor offering a spacious master bedroom, stylish en-suite and eaves storage.

Outside: The front aspect of the property is approached by a space for off road parking and steps leading up to the main residence. The rear garden benefits from a decked seating area for dining or entertaining, and an enclosed garden with mature trees and shrubbery.

Location: The town of Redditch offers easy access to motorway links (M42, Jct 2&3) and there are good rail and bus links. There are also excellent leisure facilities along with cultural attractions, and the Kingfisher Shopping Centre.



Room Dimensions:

Lounge: 11' 11" x 11' 5" (3.65m x 3.50m)

Dining Room: 11' 11" x 11' 11" (3.65m x 3.65m)

Kitchen: 9' 10" x 6' 0" (3.00m x 1.85m)

Bathroom: 6' 10" x 6' 0" (2.10m x 1.85m)

Stairs To First Floor Landing

Bedroom Two: 11' 11" x 11' 6" (3.65m x 3.52m)

Bedroom Three: 11' 11" x 9' 2" (3.65m x 2.80m)

Stairs To Second Floor Landing

Master Bedroom: 14' 9" x 11' 11" (4.50m x 3.65m)

En Suite: 11' 11" x 6' 8" (3.65m x 2.05m)

Stairs To Lower Ground Floor

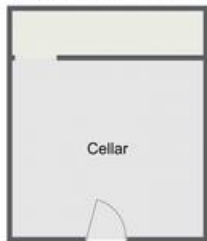
Cellar: 11' 11" x 11' 1" (3.65m x 3.38m)



Bromsgrove Road, Redditch

Ground Floor

Basement



Total Area Approx:
119.9 sq metres (1291 sq ft)



Please read the following: These particulars are for general guidance only and are based on information supplied and approved by the seller. Complete accuracy cannot be guaranteed and may be subject to errors and/or omissions. They do not constitute a contract or part of a contract in any way. We are not surveyors or conveyancing experts therefore we cannot and do not comment on the condition, issues relating to title or other legal issues that may affect this property. Interested parties should employ their own professionals to make enquiries before carrying out any transactional decisions. Photographs are provided for illustrative purposes only and the items shown in these are not necessarily included in the sale, unless specifically stated. The mention of any fixtures, fittings and/or appliances does not imply that they are in full efficient working order and they have not been tested. All dimensions are approximate. We are not liable for any loss arising from the use of these details.

EPC: TBC

COUNCIL TAX BAND: C

TENURE: Redditch

For more information on this house or to arrange a viewing please call the Bromsgrove office on:

01527 540 654

Alternatively, you can scan below to view all of the details of this property online.



373 Evesham Road
Redditch
Worcestershire
B97 5JA