

# The Henrietta

COVENT GARDEN WC2



*tavistock*bow

### A spectacular, one-of-a-kind contemporary home overlooking Covent Garden's iconic Piazza

This impeccable penthouse spans the third & fourth floors of The Henrietta, a handsome period building forming part of the Covent Garden Estate, adjacent to St. Paul's Church and one of only a handful of residential blocks located directly on the Piazza.

Developed by Capco and architects Argent Design in 2012, The Henrietta was Covent Garden's first landmark luxury residential scheme, featuring only four carefully considered apartments and highly prized to this day for its architectural heritage, meticulous attention to detail and enviable location. A dedicated building manager is shared with sister building The Russell, with 24 hour security, street cleaning and estate wide landscaping provided by the Covent Garden Estate team.



The apartment features exceptional contemporary finishes throughout, with many well considered architectural touches including a beautifully crafted, curved staircase as you enter, linking the two well-proportioned floors of accommodation.

Numerous windows feature on all sides, along with a number of skylights on the upper floor that bathe the entire apartment in wonderful light from every angle, creating beautiful lightplay across the upper floor throughout the day.











The apartment also features a private, west facing roof terrace, perfect for taking in the sunset across the rooftops of London's West End.









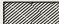






# Floorplan

Approximate Area = 234.6 sq m / 2525 sq ft  
(Including Limited Use Area = 14.5 sq m / 156 sq ft)

 Under 1.5m head height

**1 Bedroom**

5.1 x 4.4M  
16'11" x 14'7"

**2 Bedroom**

3.4 x 3.3M  
11'4" x 10'9"

**3 Bedroom/Office**

4.9 x 3.2M  
16'3" x 10'6"

**4 Utility**

3.9 x 2.3M  
12'9" x 7'7"

**5 Entrance Hall**

7.26 x 5.36M  
23'10" x 17'7"

**6 Reception/Dining**

12.8 x 6.5M  
42'0" x 21'6"

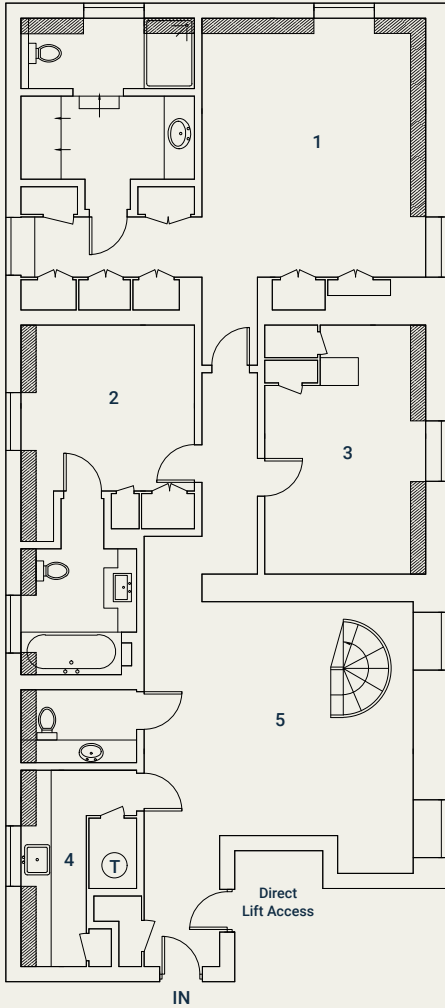
**7 Kitchen**

4.9 x 3.0M  
16'0" x 10'0"

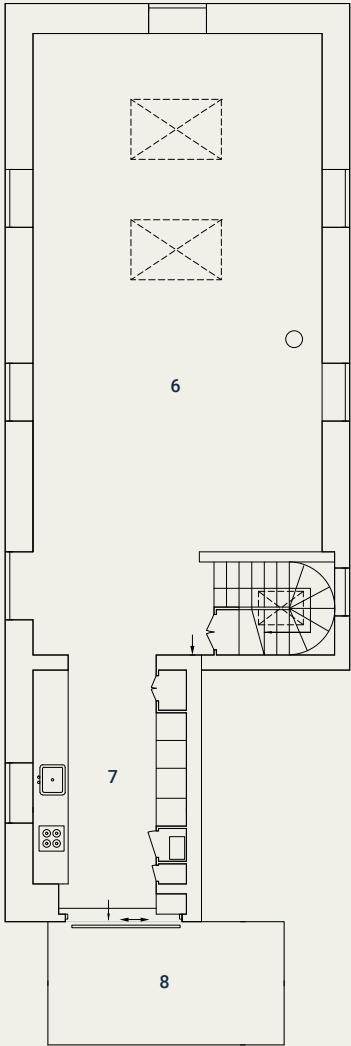
**8 Terrace**

4.7 x 2.4M  
15'5" x 8'0"

MISREPRESENTATION ACT [COPYRIGHT] DISCLAIMER: Tavistock Bow Ltd for themselves and for the vendor(s) or lessor(s) of this property whose agents they are, give notice that: 1. These particulars do not constitute, nor constitute any part of, an offer or contract. 2. None of the statements contained in these particulars as to the property are to be relied on as statements or representations of fact. 3. Any intending purchaser or lessee must satisfy themselves by inspection or otherwise as to the correctness of each of the statements contained in these particulars. 4. The vendor(s) or lessor(s) do not make or give and neither Tavistock Bow Ltd nor any person in their employment has any authority to make or give any representation or warranty whatever in relation to this property. Finance Act 1989: Unless otherwise stated all prices and rents are quote exclusive of VAT. Property Misrepresentations Act 1991: These details are believed to be correct at the time of compilation but may be subject to subsequent amendment.



Fourth Floor



Fifth Floor

This plan is for layout guidance only. Not drawn to scale unless stated. Windows and door openings are approximate. Whilst every care is taken in the preparation of this plan, please check all dimensions, shapes and compass bearings before making any decisions reliant upon them. (ID675604)



# Features

**Fourth Floor:**

- Direct Lift Access
- Well proportioned reception hallway with bespoke curved feature staircase
- Principal bedroom suite with dressing area & spacious en-suite bath/shower room
- Guest bedroom with en-suite bathroom
- Third bedroom/study
- Guest WC
- Utility Room

**Fifth floor:**

- Large open living space benefitting from windows on three sides & large skylights
- Contemporary high specification kitchen featuring Miele appliances & quartz worktops
- Private west facing decked & planted terrace with far reaching views across the roof-tops of London's West End

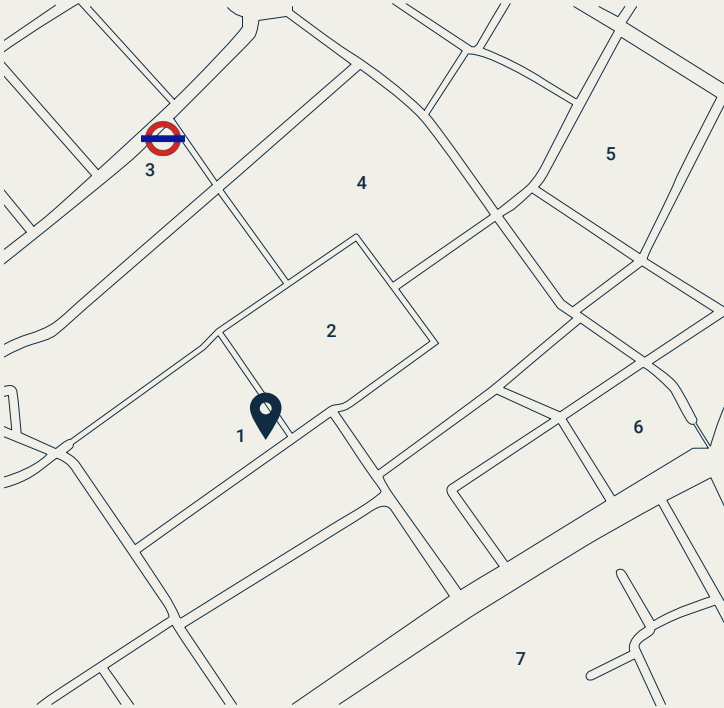


# The Location

Covent Garden is globally recognised as London's premier cultural, retail, leisure & entertainment destination. Notable restaurants include Balthazar, The Ivy Market Grill and Sushi Samba, as well as the much lauded Frenchie, Oystermen, Cora Pearl and Taiwan's legendary Din Tai Fung.

The Henrietta Hotel has a fantastic cocktail bar & restaurant, with nearby Floral Court providing a tranquil oasis with fantastic al-fresco dining at Petersham Nurseries La Goccia and The Petersham.

High end fashion & beauty retailers rub shoulders including Tom Ford, Burberry, Gucci, Tiffany & Co, Aesop, Polo Ralph Lauren, London's flagship Apple Store and Paul Smith's eponymous boutique on nearby Floral Street.



- 1 The Henrietta
- 2 The Market Building
- 3 Covent Garden Tube
- 4 The Royal Opera House
- 5 Theatre Royal Drury Lane
- 6 Lyceum Theatre
- 7 Savoy Theatre



The Royal Opera House dominates the piazza with world renowned residents the Royal Ballet & Royal Opera, plus many of the world's most popular stage shows can be found at the numerous theatres within a few minutes walk.

Hidden away between Henrietta Street & King Street is the quiet public space of St. Paul's Church gardens, providing the perfect antidote to the hustle & bustle of the Piazza, with the open space of Embankment Gardens and the river Thames only a short stroll across the strand, and the Southbank just a short trip across the river via either Waterloo or Hungerford Bridge.





# *tavistock*bow



31 Long Acre, Covent Garden, WC2E 9LA  
020 7477 2177  
[hello@tavistockbow.com](mailto:hello@tavistockbow.com)  
[www.tavistockbow.com](http://www.tavistockbow.com)

