



**Lexington Court,
Broadway,
Salford Quays**

£164,950

- **VIDEO TOUR AVAILABLE**
- Beautiful Third Floor Apartment
- **Two True Double Bedrooms**
- Fitted Kitchen With Integrated Appliances
- **Contemporary Three Piece Bathroom Suite**
- Secure Gated Parking Space
- **Close To Local Tram Stop**
- Close To M60 Motorway & Manchester Ring Road
- **Approx. Five Minute Walk To Media City**
- EPC Rating - C



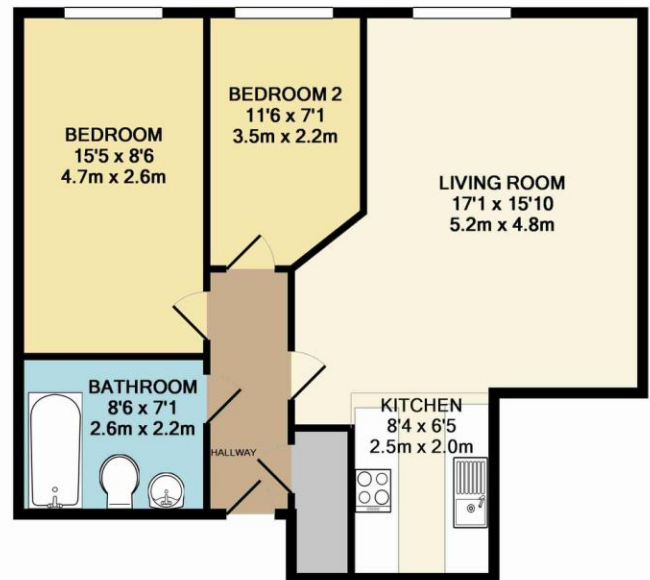
A modern third floor apartment with two true double bedrooms located on the edge of Salford Quays with easy access to the M60 Motorway and City Centre Manchester via the Metro or the ring road.

The accommodation briefly comprises a entrance hallway, large living room open to a fitted kitchen with integrated appliances, two true double bedrooms, contemporary three piece bathroom suite.

With electric heating and double glazing throughout, the property further benefits from a secure gated parking space. Call now to avoid disappointment.

If you are interested in viewing or have a question we are available 8am till 10pm 7 days a week! We will work harder than any agent to ensure you secure the property that's perfect for you at the perfect price for your pocket.

Call Mark or Paul on 07545 073355 or 0161 236 0004 we can even pick you up from home or work to view this property.



TOTAL APPROX. FLOOR AREA 623 SQ.FT. (57.9 SQ.M.)

Whilst every attempt has been made to ensure the accuracy of the floor plan contained here, measurements of doors, windows, rooms and any other items are approximate and no responsibility is taken for any error, omission, or mis-statement. This plan is for illustrative purposes only and should be used as such by any prospective purchaser. The services, systems and appliances shown have not been tested and no guarantee as to their operability or efficiency can be given
Made with Metropix ©2016

Open seven days a week,
buckleyfrayne is a proprietor
owned and led business.

**More properties are available
at www.buckleyfrayne.co.uk**