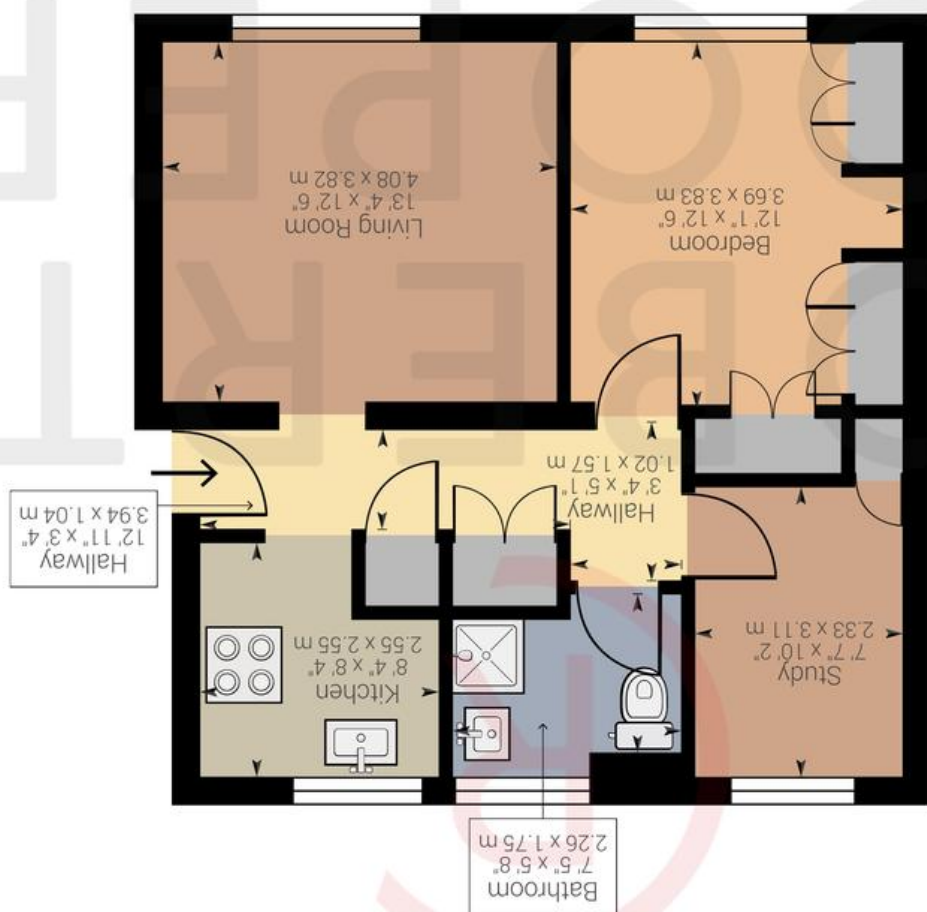


Powered by Giraffe360

Approximate net internal area: 613.78 ft² / 57.02 m²
While every attempt has been made to ensure accuracy, all measurements are approximate, not to scale. This floor plan is for illustrative purpose only and should be used as such by any prospective tenant or purchaser.



EST. 1983



SALISBURY HOUSE , RODWELL CLOSE , HA4 9NE

OFFERS IN EXCESS OF £350,000





Presented in superb condition throughout is this two double bedroom ground floor apartment set on this quiet cul-de-sac in the heart of Eastcote. Features include ultra modern interiors, beautiful parquet flooring, bespoke shutter blinds, long lease, separate kitchen and living area and built in wardrobes to both bedrooms. The property is 0.2 miles away from Eastcote high street and station (Metropolitan & Piccadilly Line) and 0.3 miles away from the sought after Newnham Infant and primary school.

Two Double Bedrooms

Ground Floor

Long Lease

Ultra Modern Interiors

Parquet Flooring

Bespoke Shutter Blinds

Catchment Area For Fantastic Schools

Walking Distance To Met/Piccadilly Line

