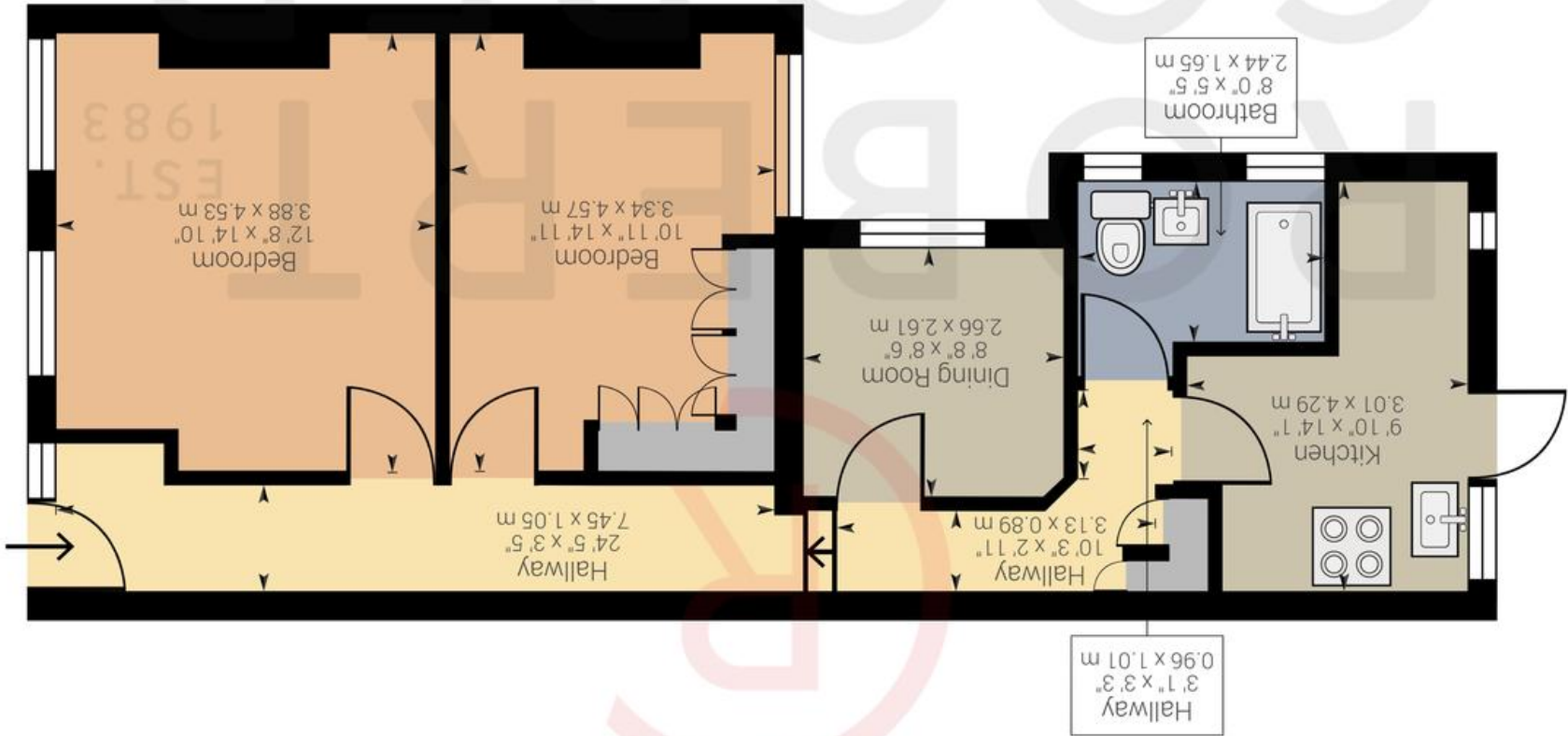


Powered by Giraffe360

Approximate net internal area: 716.35 ft² / 66.55 m²
While every attempt has been made to ensure accuracy, all measurements are approximate, not to scale. This floor plan is for illustrative purpose only and should be used as such by any prospective tenant or purchaser.



VICTORIA ROAD, HA4 0AH

£270,000





A well presented two bedroom apartment set in the heart of Ruislip Manor with easy access to Ruislip Manor high street and station. Features include no upper chain, long lease, two bedrooms, separate kitchen and living area and high street location. The property is 0.1 miles away from Ruislip Manor high street and station (Metropolitan & Piccadilly Line).

Two Bedrooms

Separate Kitchen & Living Area

High Street Location

No Upper Chain

Long Lease

Walking Distance To Met/Piccadilly Line

