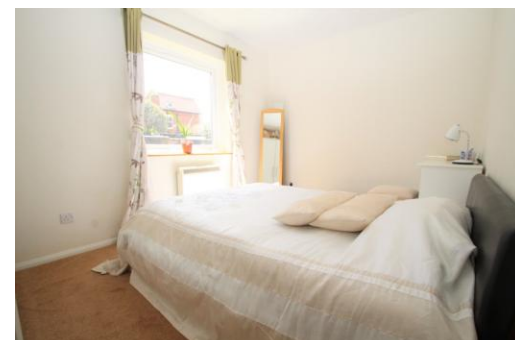




- Ground Floor Apartment Overlooking South Facing Communal Gardens
- Lengthy Lease (142 Years Remaining)
- 17'7 x 16'9 L Shaped Lounge/Diner
- 11'4 Kitchen with Breakfast Bar
- White Bathroom Suite
- Own Private Entrance
- Close to Town Centre & Seafront
- Currently Let on AST at £645 pcm
- Residents Parking Area (Unallocated)
- Chain Free

Flat 3 Maltravers Court, Maltravers Road, Littlehampton, BN17 5LX

£154,950



LOUNGE 17' 7" x 16' 9" (5.36m x 5.11m)

KITCHEN 11' 4" x 6' 1" (3.45m x 1.85m)

BEDROOM 12' 1" x 8' 9" (3.68m x 2.67m)

BATHROOM 6' 10" x 6' 3" (2.08m x 1.91m)

TENURE Approx 142 years remaining.

SERVICE CHARGE Approx £1,252 per annum.

EPC RATING D