

241 Deansgate, Manchester, Lancashire, M3 4EL

Tel: 0161 637 8336

Email: contactus@ascendproperties.com

www.ascendproperties.com

Ascend

Built on higher standards



Local Crescent, Hulme Street, Salford

£1,050 PCM

Located in a vibrantly rejuvenated area of Salford, this property is just a short distance from the Manchester City Centre and has a network of amenities close by.

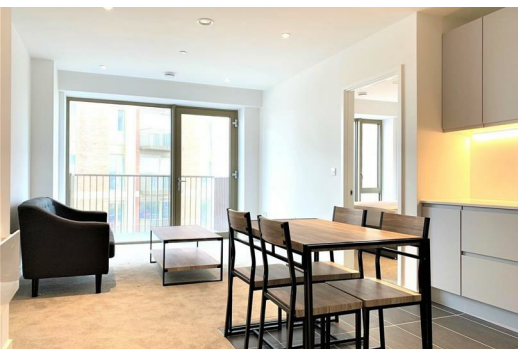
You'll love the contemporary and best-in-class, open-plan kitchen which has plenty of space for all your get-togethers, gatherings and shindigs. The kitchen is fully equipped with integrated fridge-freezer and dishwasher. The two spacious bedrooms both have access to en-suite bathrooms and open plan living space all benefit from floor to ceiling windows which open up to give a nice breeze in the summer months.

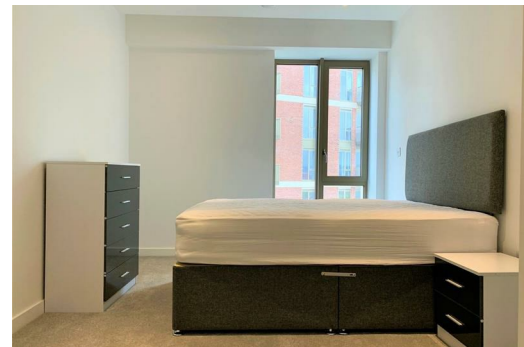
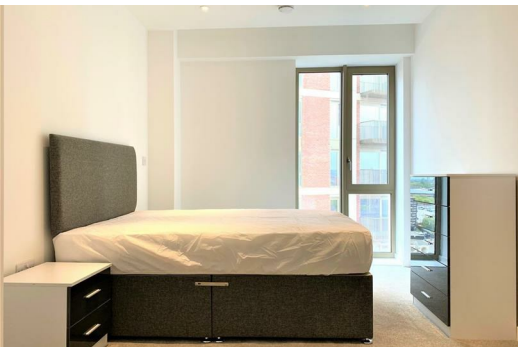
Your house will feel like more than a home at The Crescent as you live with luxury amenities at your fingertips. Between the 5th floor roof terrace, podium terrace, resident's solarium and courtyard gardens, you can live the ultimate city lifestyle with ample space and opportunity to enjoy the outdoors without even leaving the building. What's more, this apartment is offered unfurnished meaning that you can truly make this property your own.

In your new luxurious setting you can also enjoy the state-of-the-art cinema room, indoor heated swimming pool & spa and fully equipped gymnasium – with all of this right on your doorstep, you'll have even more time to spend relaxing in your apartment and spending time with friends.

This apartment sits in a fantastic location. You're just a 15-minute walk to the Manchester city centre with all its thriving bars, restaurants, clubs and more and just a 6-minute walk to University of Salford - what more could you want from your new home?

Available Now





Energy Efficiency Rating		Environmental Impact (CO ₂) Rating	
Band	Score	Band	Score
A	92-100	A	1-23
B	81-91	B	24-47
C	69-80	C	48-71
D	55-68	D	72-100
E	39-54	E	101-120
F	21-38	F	121-140
G	1-20	G	141-175

England & Wales