



Hillside Gardens, Wittering

Peterborough, Northamptonshire, PE8 6DX

NEWTONFALLOWELL 

Hillside Gardens, Wittering

Peterborough, Northamptonshire, PE8 6DX

£220,000 Freehold

Beautifully presented three bedroom townhouse, situated in a quiet estate of Wittering close to local amenities and the popular primary school. The property benefits from an open plan kitchen diner with modern units, light and airy living room, three well balanced bedrooms, two bathrooms, landscaped rear garden and single garage with driveway.

The property is arranged over three floors, entering via the entrance hall and the open plan kitchen diner which features an array of modern units with integrated appliances and karndean flooring. Under the stairs was formerly the cloakroom but now a very useful storage cupboard. Completing downstairs is the large living room with an abundance of space and natural light thanks to the French doors which open out onto the patio. To the first floor, the landing connects a large double bedroom with built wardrobes with sliding glass doors, a further single bedroom and the family three piece bathroom. To the second and final floor, is a further spacious double bedroom, with two sky lights, recess area for wardrobe spaces and its own three piece en suite with walk in shower.

Outside to the front an inset footpath leads to the front door accompanied by a low maintenance gravelled garden. To the side of the property is a single garage and driveway for one vehicle. The rear garden has been landscaped to feature a patio seating area, decking seating area and lawn, all enclosed.



Kitchen diner

15'11 x 12'10 (4.85m x 3.91m)

Living room

14' x 12'10 (4.27m x 3.91m)

Landing

18'2 x 6'4 (5.54m x 1.93m)

Bedroom two

12'10 x 12'4 (3.91m x 3.76m)

Bedroom three

11'1 x 6'3 (3.38m x 1.91m)

Bathroom

6'9 x 6'2 (2.06m x 1.88m)

2nd Landing

4'6 x 3'5 (1.37m x 1.04m)

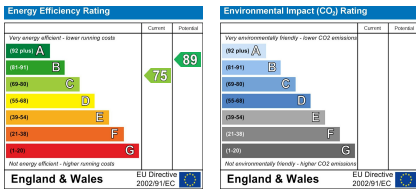
Bedroom one

12'10 x 17'4 narrowing 11'9 (3.91m x 5.28m
narrowing 3.58m)

En suite

9'2 x 7'6 (2.79m x 2.29m)



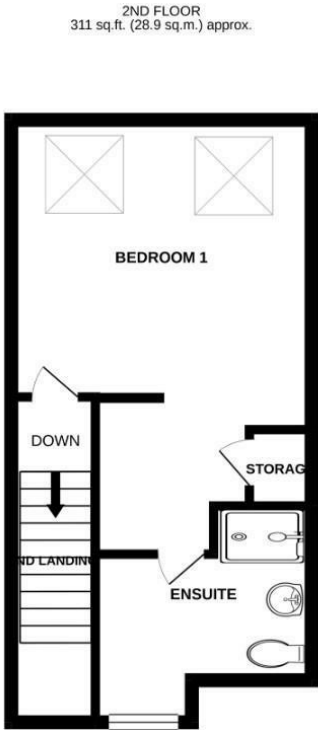
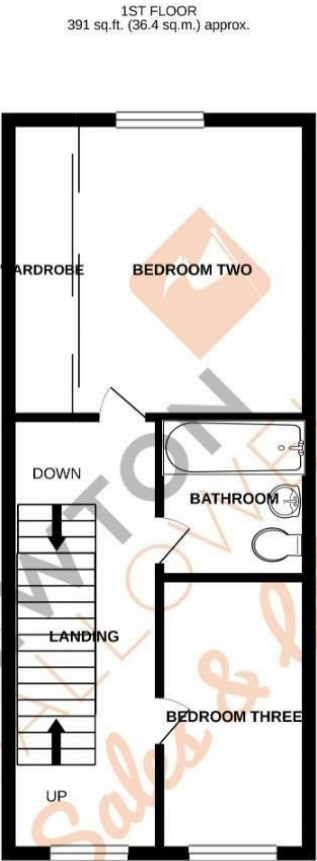


AGENTS NOTE – DRAFT PARTICULARS:

These particulars are issued in good faith but do not constitute representations of fact or form part of any offer or contract. The matters referred to in these particulars should be independently verified by prospective buyers or tenants. Neither Newton Fallowell nor any of its employees or agents has any authority to make or give any representation or warranty whatever in relation to this property.

Anti-Money Laundering Regulations: Intending purchasers will be asked to produce identification documentation at the offer stage and we would ask for your co-operation in order that there will be no delay in agreeing the sale.

Newton Fallowell and our partners provide a range of services to buyers, although you are free to use an alternative provider. For more information simply speak to someone in our branch today. We can refer you on to The Mortgage Advice Bureau for help with finance. We may receive a fee of £200, if you take out a mortgage through them. If you require a solicitor to handle your purchase we can refer you on to our in house solicitors. We may receive a fee of £300 if you use their services.



TOTAL FLOOR AREA : 1094 sq.ft. (101.7 sq.m.) approx.

Whilst every attempt has been made to ensure the accuracy of the floorplan contained here, measurements of doors, windows, rooms and any other items are approximate and no responsibility is taken for any error, omission or mis-statement. This plan is for illustrative purposes only and should be used as such by any prospective purchaser. The services, systems and appliances shown have not been tested and no guarantee as to their operability or efficiency can be given.
Made with Metropix ©2021



**NEWTON
FALLOWELL**

t: 01780 754530
e: stamford@newtonfallowell.co.uk
www.newtonfallowell.co.uk