



# CHARLCOT MEWS CIPPENHAM, SL1 5HD

\*\*\*LARGE TWO BEDROOM GROUND FLOOR  
FLAT\*\*\*

\* Master bedroom\* Allocated parking space \* 5

# £1,000 PCM

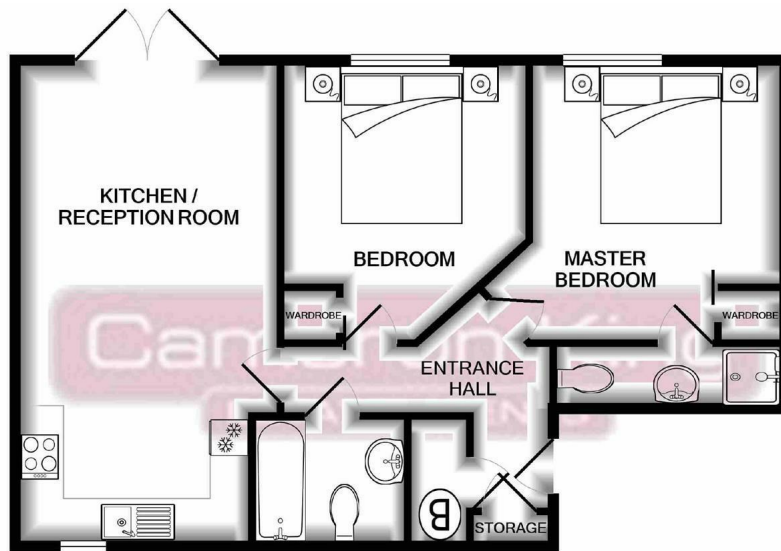


---

 Offered to the market  2  1

 2 EPC C

---



Whilst every attempt has been made to ensure the accuracy of the floor plan contained here, measurements of doors, windows, rooms and any other items are approximate and no responsibility is taken for any error, omission, or mis-statement. This plan is for illustrative purposes only and should be used as such by any prospective purchaser. The services, systems and appliances shown have not been tested and no guarantee as to their operability or efficiency can be given  
 Made with Metropix ©2019

**minute walk to Burnham train station\* phone entry system\* Easy Access to M4 \* Offered part furnished \* Available from June 2021**

- GROUND FLOOR
- SECURE ENTRY SYSTEM
- AUTOMATIC GATES
- PARKING
- DOUBLE BEDROOMS
- EN-SUITE
- WALKING DISTANCE TO CIPPENHAM PRIMARY SCHOOL
- SHORT DRIVE TO MOTORWAY
- CLOSE TO BURNHAM STATION
- OFFERED PART FURNISHED



411 Bath Road, Slough, SL1 5QL  
 t: 01628 667442  
 e: sales@cameronking.co.uk

