

www.walkerwaterer.co.uk



Walker &
Waterer

19 Silver Birch Way
Whiteley PO15 7GG

£290,000



Three Bedroom Terraced House

Available Immediately To Buy To Let Investors

Property Is Currently Rented To Long Term Tenants

Walking Distance To Local Shops & Amenities

Lounge To The Front With Centre Piece Fireplace

Fitted Kitchen/Dining Room With Built In Appliances

Main Bedroom Benefitting From En-Suite Shower Room

Two Further Bedrooms Both Benefiting From Built In Wardrobes

Family Bathroom Comprising Three Piece White Suite & Tiling

Rear Enclosed Garden

Allocated Parking

No Chain Ahead

Silver Birch Way is just a five minute walk to the shops, eateries and amenities of Whiteley Shopping Centre as well as the local primary school and leisure centre. Also easily accessed is Swanwick train station, the A27 & M27.

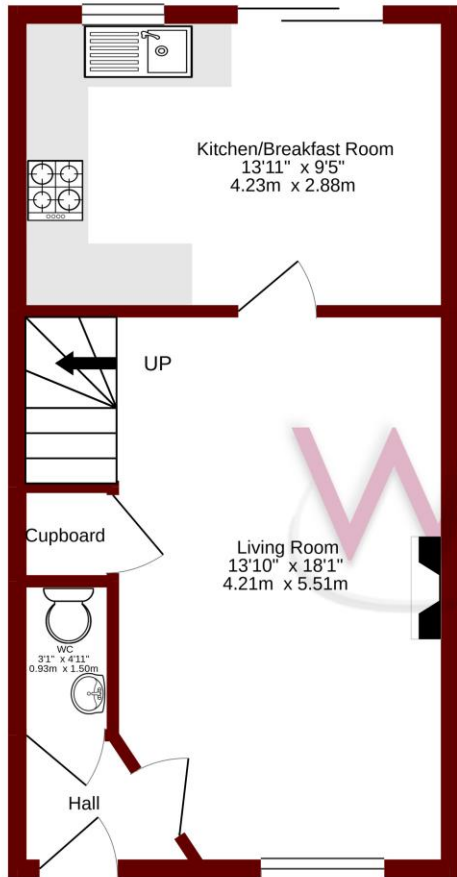
Freehold

Council Tax Band C

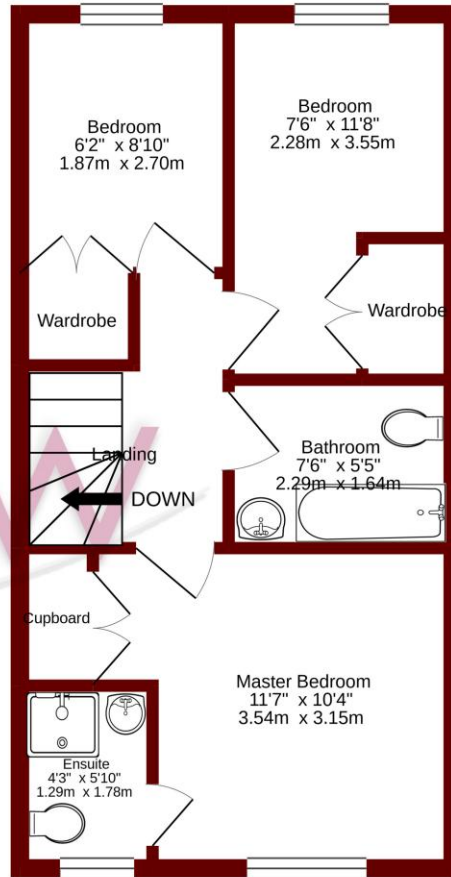
EPC Rating -**75**

01489 580800

Ground floor
374 sq.ft. (34.7 sq.m.) approx.



1st floor
377 sq.ft. (35.0 sq.m.) approx.



TOTAL FLOOR AREA: 751 sq.ft. (69.8 sq.m.) approx.

Whilst every attempt has been made to ensure the accuracy of the floorplan contained here, measurements of doors, windows, rooms and any other items are approximate and no responsibility is taken for any error, omission or mis-statement. This plan is for illustrative purposes only and should be used as such by any prospective purchaser. The services, systems and appliances shown have not been tested and no guarantee as to their operability or efficiency can be given.
Made with Metropix ©2021

01489 577990
20e Bridge Road, Park Gate SO31 7GE

01489 580800
E14 Whiteley Shopping Centre PO15 7PD



www.walkerwaterer.co.uk

THE
GUILD
PROPERTY
PROFESSIONALS

Viewings strictly by appointment.

For any mortgage advice please call one of our offices. Your home may be repossessed if you do not keep up repayments on your mortgage.
Walker & Waterer believe these particulars to be correct but their accuracy cannot be guaranteed and they do not form any part of any contract. Please note at the time of inspection we were unable to check if the services and appliances were in working order. Any intending buyer must satisfy themselves with the condition and working order of such items and services and is advised to take the advice of his/her solicitor/surveyor.